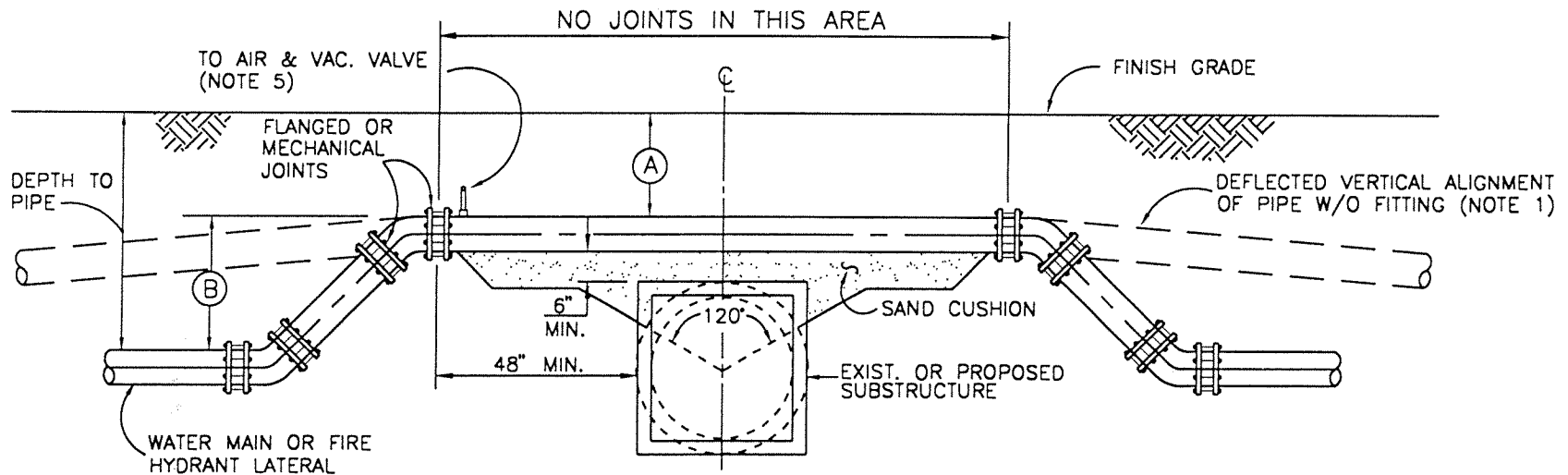


REV.	APPR. BY	DATE

REV.	APPR. BY	DATE



IF DIMENSION (A) IS LESS THAN 30", PIPE SHALL BE INSTALLED PER CONDITION II (PLATE 313) UNLESS APPROVED BY THE CITY ENGINEERING DEPT.

NOTES:

1. IF RETURN TO DESIGNED PIPE DEPTH BY DEFLECTION CANNOT BE ACCOMPLISHED WITHIN (40'), PIPE FITTINGS AND APPURTENANCES WILL BE REQUIRED PER THIS PLATE UNLESS OTHERWISE DIRECTED IN THE FIELD.
2. MAXIMUM ALLOWABLE ANGLE OF ELBOW = 45°.
3. MAXIMUM ALLOWABLE PIPE JOINT DEFLECTION SHALL BE PER PIPE MANUFACTURER'S RECOMMENDATION.
4. ALL PIPE JOINTS 22 1/2' OR GREATER SHALL BE THRUST BLOCK PROTECTED.
5. AIR VACUUM RELEASE ASSEMBLY INSTALLATION REQUIRED WHEN DIMENSION (B) IS MORE THAN 1/2 PIPE DIA. (SEE PLATE 308).
6. ALL FITTINGS SHALL BE THERMO EPOXY OR MORTAR LINED, NO-OX-ID COATED AND P.E. WRAPPED.
7. ALL PIPE FOR OFFSET SHALL BE PVC CLASS 200; MORTAR LINED OR EPOXY COATED DUCTILE IRON OR CMLC WELDED STEEL PIPE.
8. RESTRAINED JOINTS MAY BE SUBSTITUTED IN LIEU OF THRUST BLOCKS. RESTRAINED JOINTS SHALL BE MANUFACTURED BY EOMAC INDUSTRIES, OR APPROVED EQUAL.
9. ALL FITTINGS SHALL BE DUCTILE IRON.
10. PVC INSTALLATIONS SHALL INCLUDE A 12 GAUGE LOCATING WIRE.

Arnold
CITY OF

Department of Public Works

DRAWN: STAFF

CKD: STAFF

APPR. *Carl Bowman*
Granville M. Bowman

RELOCATION OF WATER MAIN & FIRE HYDRANT LATERALS
CONDITION I

STANDARD PLAN
2002

PLATE 312

SHEET 1 OF 1