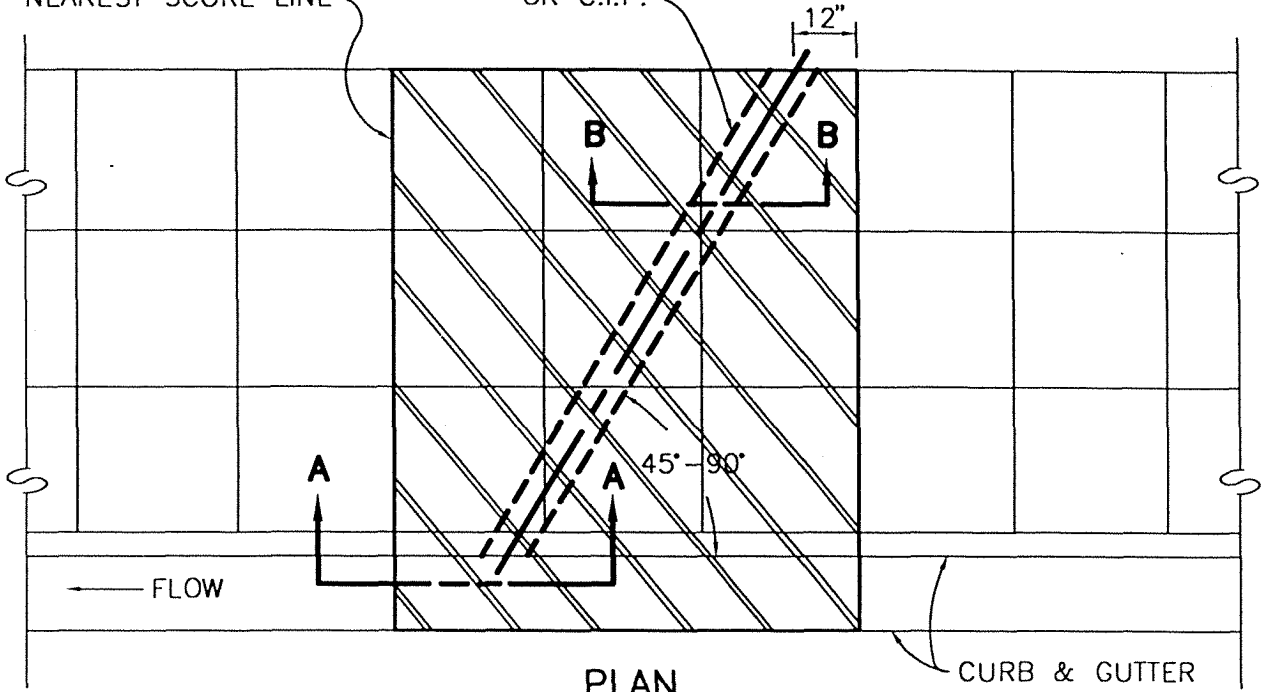


REV.	APPR. BY	DATE

SAWCUT (TYP.) AT NEAREST SCORE LINE

3" SCHEDULE 80 P.V.C. OR C.I.P.



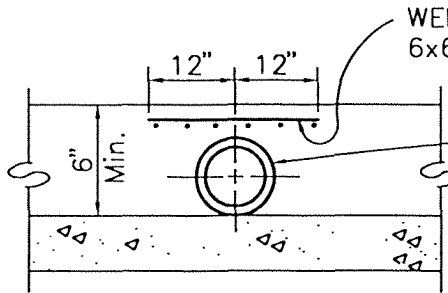
PLAN

CURB & GUTTER



REMOVE AND REPLACE EXISTING CONCRETE (4" THICK). PLACE EXPANSION JOINTS BETWEEN EXISTING AND NEW CONCRETE. ANGLE SHALL BE DETERMINED BY THE INSPECTOR.

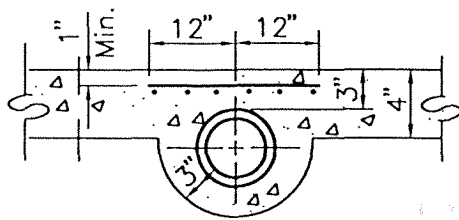
REV.	APPR. BY	DATE



SECTION A-A

WELDED WIRE MESH  
6x6-W5xW5

3" SCHEDULE 80 P.V.C. OR C.I. PIPE SHALL BE CUT FLUSH WITH CURB FACE. MATCH FLOW LINE OF GUTTER. WHERE THERE IS ONLY CURB, RAISE PIPE 1/2" ABOVE FLOW LINE.



SECTION B-B

**NOTES:**

- EXISTING P.C.C. CURB MAY BE CORE DRILLED TO ACCEPT PIPE, AS APPROVED BY ENGINEER.
- NO NEW SIDEWALK DRAINS ALLOWED IN RESIDENTIAL CONSTRUCTION. LIMITED USE ALLOWED IN NON-RESIDENTIAL AREAS WHERE STRUCTURES ABUT PUBLIC SIDEWALKS. PRIOR APPROVAL OF CITY ENGINEER REQUIRED FOR ALL INSTALLATIONS.



CITY OF

**SIDEWALK DRAIN-PIPE**

STANDARD PLAN  
2002

DRAWN: STAFF

CKD.: STAFF

PLATE 122

Department of Public Works

APPR.

Granville M. Bowman

SHEET 1 OF 1