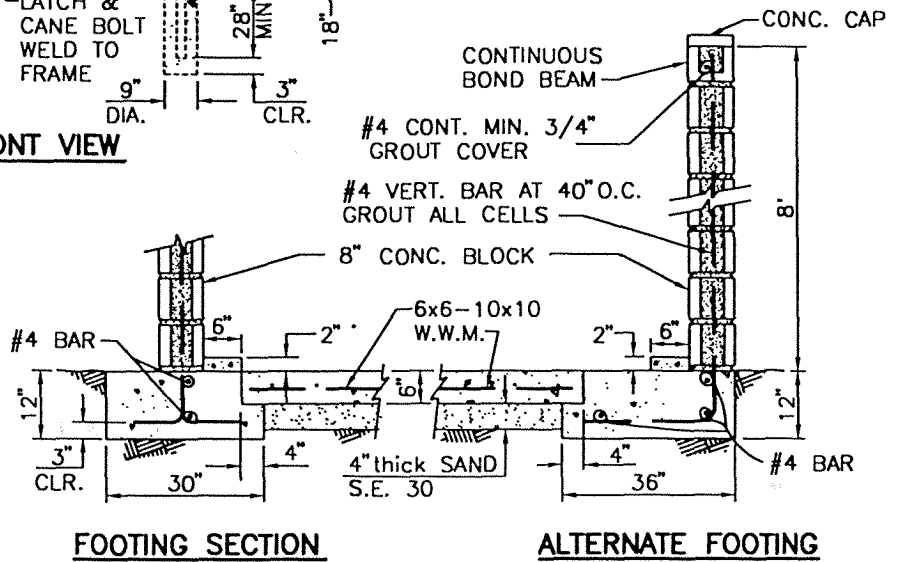
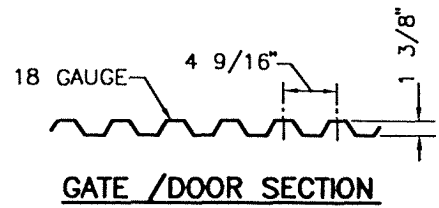
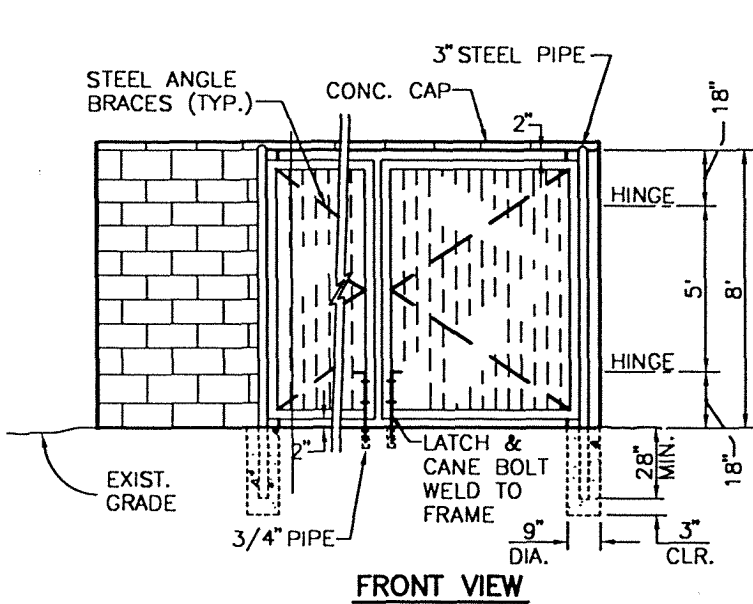
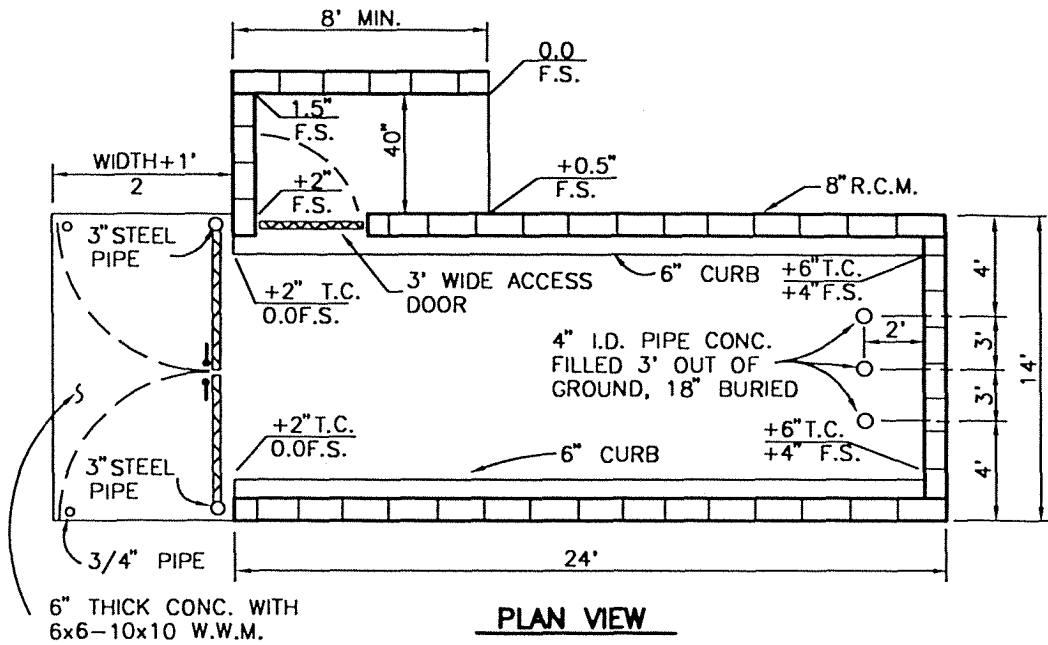


REV.	APPR. BY	DATE

REV.	APPR. BY	DATE



	CITY OF 30 YARD REFUSE CONTAINER ENCLOSURE		STANDARD PLAN 2002
	DRAWN: STAFF	CKD.: STAFF	APPR. <i>Granville M. Bowman</i> Granville M. Bowman
Department of Public Works			SHEET 1 OF 2

NOTES

1. WALLS: SLUMPSTONE BLOCK, REINFORCED AND CAPPED. STRUCTURE TO BE APPROVED PRIOR TO CONSTRUCTION BY DEVELOPMENT SERVICES DEPARTMENT.
2. GATES: SHALL BE STEEL FRAMED WITH STEEL ANGLE BRACE TYPE METAL 18 GAUGE AND STEEL MINI V-BEAM PANEL AND THE GATE ITSELF, SHALL BE HUNG ON A 3" STEEL PIPE, CONCRETE FILLED THAT IS NOT ATTACHED TO THE ENCLOSURE. SHALL NOT OPEN INTO DRIVING LANES OR PARKING SPACES.
3. SIZE: ENCLOSURE SIZE FOR SINGLE 30 YARD CONTAINER IS TO BE 24' DEEP AND 14' WIDE (OUTSIDE DIMENSION) SIZE OF ENCLOSURE TO BE DETERMINED IN ADVANCE OF CONSTRUCTION BY THE REFUSE SUPERINTENDENT.
4. LOCATION: TO BE DETERMINED IN ADVANCE OF CONSTRUCTION FROM PLANS SUBMITTED TO THE REFUSE SUPERINTENDENT. CONSTRUCTION SHALL BE IN ACCORDANCE WITH CITY OF OXNARD ORDINANCE-SECTION 34-9.4, 15-19, AND 15-26.
5. FLOOR: SHALL BE OF CONCRETE, WITH A MAXIMUM SLOPE OF 2" TO DRAIN ENCLOSURE, AND FLUSH WITH ADJOINING PAVEMENT
6. LATCH: A LATCHING ASSEMBLY IS REQUIRED WITH CANE BOLTS ON BOTH GATES TO HOLD IN OPEN AND CLOSED POSITION WITH 3/4" PIPE TO HOLD THE CANE BOLT.
7. ACCESSABILITY: ENCLDSURE SHALL NOT BE LOCATED BEHIND A LOCKED ENTRY OR GATE. THE ENCLOSURE OPENING MAY NOT BE BLOCKED BY PARKING OR LOADING SPACES. ANY CHANGES OF THIS REQUIREMENT MUST BE APPROVED BY THE REFUSE DIVISION BEFORE CONSTRUCTION.
8. ROOF: A SOLID ROOF IS REQUIRED ON ALL TRASH ENCLOSURES.
9. GREASE INTERCEPTER: TRASH ENCLOSURES SERVING FOOD PREPARATION FACILITIES, GAS STATIONS AND GROCERY STORES SHALL INCLUDE A TRENCH DRAIN WITHIN THE ENCLOSURE WHICH DRAINS THROUGH A GREASE INTERCEPTER TO THE SEWER SYSTEM. OTHER USES MAY BE REQUIRED TO INSTALL A TRENCH DRAIN AS DIRECTED BY THE CITY ENGINEER.
10. FIRE SPRINKLERS: FIRE SPRINKLERS MAY BE REQUIRED BY THE CALIFORNIA BUILDING CODE OR THE UNIFORM FIRE CODE.
11. PARKING: NO PARKING SPACES ARE ALLOWED WITHIN 5 FEET OF EDGE OF ENCLOSURE.

REV.	APPR. BY	DATE		

REV.	APPR. BY	DATE		

 <p>CITY OF</p>	30 YARD REFUSE CONTAINER ENCLOSURE		STANDARD PLAN 2002
	DRAWN: STAFF	CKD.: STAFF	PLATE 607
Department of Public Works		APPR.  Granville M. Bowman	SHEET 2 OF 2