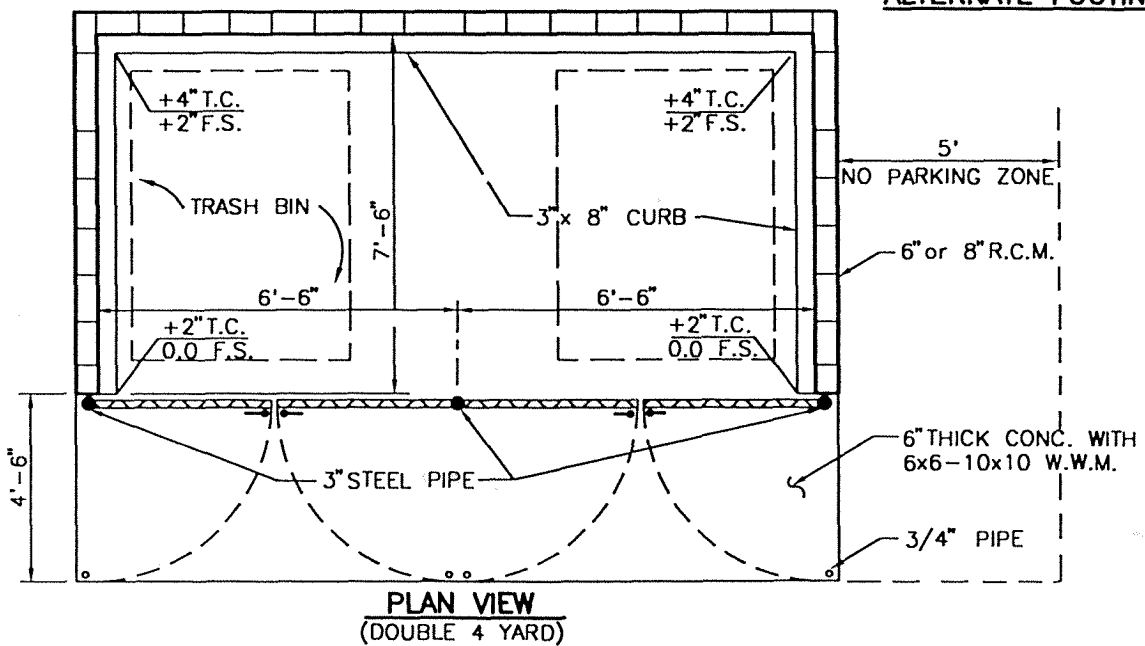
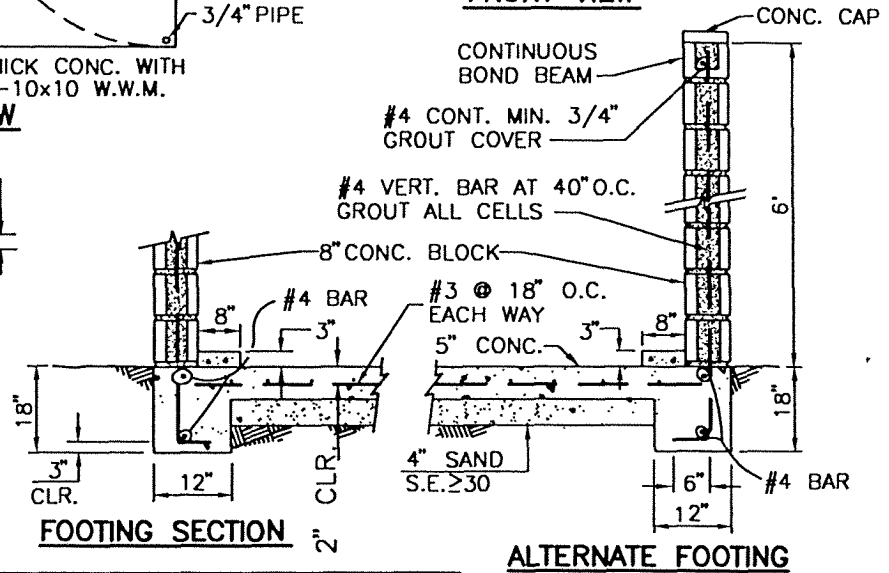
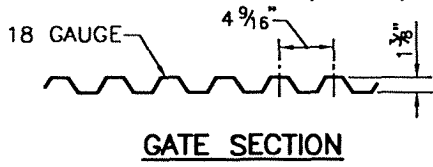
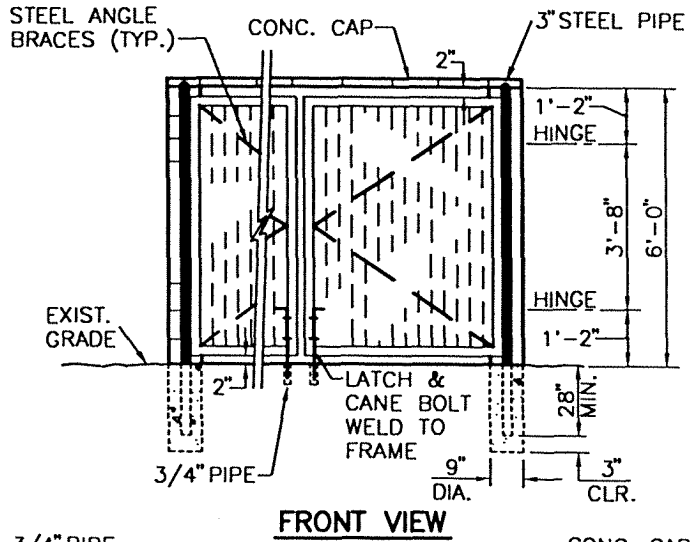
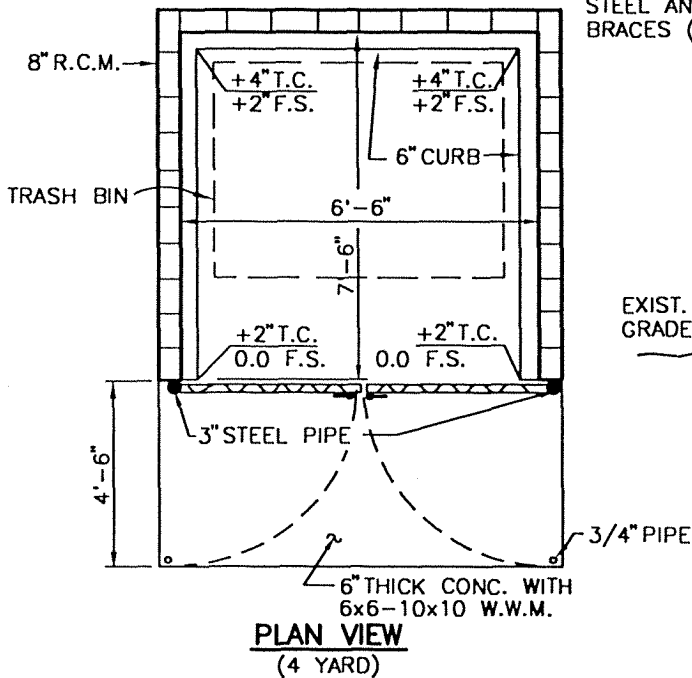


REV.	APPR. BY	DATE

REV.	APPR. BY	DATE



PERPENDICULAR REFUSE CONTAINER ENCLOSURE WITHOUT SIDE ENTRANCE

DRAWN: STAFF CKD.: STAFF

APPR. *Granville M. Bowman*
Granville M. Bowman

STANDARD PLAN 2002

PLATE 606

SHEET 1 OF 2

NOTES:

1. **WALLS:** SLUMPSTONE BLOCK, REINFORCED AND CAPPED. STRUCTURE TO BE APPROVED PRIOR TO CONSTRUCTION BY BUILDING AND SAFETY DEPARTMENT.
2. **GATES:** SHALL BE STEEL FRAMED WITH STEEL ANGLE BRACE TYPE METAL 18 GAUGE AND STEEL MINI V-BEAM PANEL AND THE GATE ITSELF, SHALL BE HUNG ON A 3" STEEL PIPE, CONCRETE FILLED THAT IS NOT ATTACHED TO THE ENCLOSURE. SHALL NOT OPEN INTO DRIVING LANES OR PARKING SPACES.
3. **SIZE:** ENCLOSURE SIZE FOR SINGLE FOUR YARD CONTAINER IS TO BE 7' DEEP AND 7'-6" WIDE AND FOR DOUBLE FOUR YARD IS TO BE 7' 6" DEEP AND 15' WIDE. SIZE OF ENCLOSURE TO BE DETERMINED IN ADVANCE OF CONSTRUCTION BY THE REFUSE SUPERINTENDENT.
4. **LOCATION:** TO BE DETERMINED IN ADVANCE OF CONSTRUCTION FROM PLANS SUBMITTED TO THE REFUSE SUPERINTENDENT. CONSTRUCTION SHALL BE IN ACCORDANCE WITH CITY OF OXNARD ORDINANCE--SECTION 34-9.4, 15-19, AND 15-26.
5. **FLOOR:** SHALL BE OF CONCRETE, WITH A MAXIMUM SLOPE OF 2" TO DRAIN ENCLOSURE, AND FLUSH WITH ADJOINING PAVEMENT
6. **LATCH:** A LATCHING ASSEMBLY IS REQUIRED WITH CANE BOLTS ON BOTH GATES TO HOLD IN OPEN AND CLOSED POSITION WITH 3/4" PIPE TO HOLD THE CANE BOLT.
7. **ACCESSABILITY:** ENCLOSURE LOCATIONS SHOULD NOT BE BEHIND ANY LOCKED GATES, CHAINS, OR FENCES. IF ENCLOSURE LOCATIONS ARE SITUATED BEHIND LOCKED COMPLEXES, THE CONDITIONS FOR PICKUP WILL BE FORMALIZED IN A WRITTEN AGREEMENT SIGNED BY THE OWNER AND APPROVED BY THE REFUSE SUPERINTENDENT. THIS AGREEMENT MUST BE APPROVED PRIOR TO APPROVAL OF PLANS. CONTACT THE REFUSE PROGRAM FOR DETAILS AT 385-8060.
8. **ROOF:** A SOLID ROOF WITH 8 FEET OF CLEARANCE IS REQUIRED ON ALL TRASH ENCLOSURES.
9. **GREASE INTERCEPTOR:** TRASH ENCLOSURES SERVING FOOD PREPARATION FACILITIES, GAS STATIONS AND GROCERY STORES SHALL INCLUDE A TRAFFIC RATED TRENCH DRAIN WITHIN THE ENCLOSURE WHICH DRAINS THROUGH A GREASE INTERCEPTER TO THE SEWER SYSTEM. OTHER USES MAY BE REQUIRED TO INSTALL A TRENCH DRAIN AS DIRECTED BY THE CITY ENGINEER.
10. **FIRE SPRINKLER:** FIRE SPRINKLER MAY BE REQUIRED BY THE CALIFORNIA BUILDING CODE OR THE THE UNIFORM FIRE CODE.
11. **PARKING:** NO PARKING SPACES ARE ALLOWED WITHIN 5 FEET OF EDGE OF ENCLOSURE.

REV.	APPR. BY	DATE

REV.	APPR. BY	DATE

 <p align="center">CITY OF Oxnard</p>	PERPENDICULAR REFUSE CONTAINER ENCLOSURE WITHOUT SIDE ENTRANCE		STANDARD PLAN 2002
	DRAWN: STAFF	CKD.: STAFF <i>LE</i>	APPR. <i>Granville M. Bowman</i> Granville M. Bowman