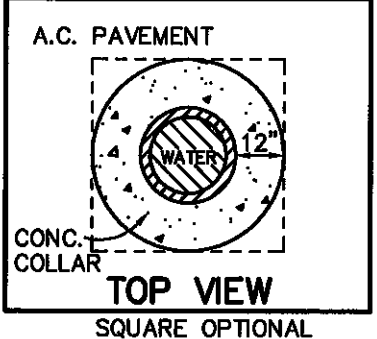
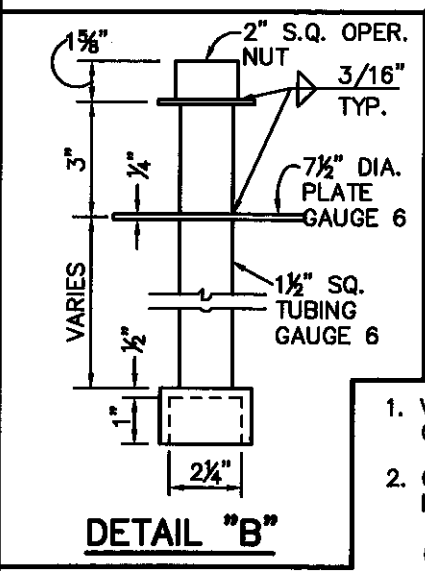
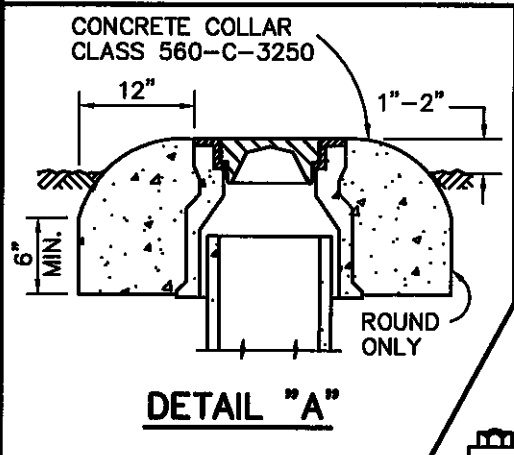
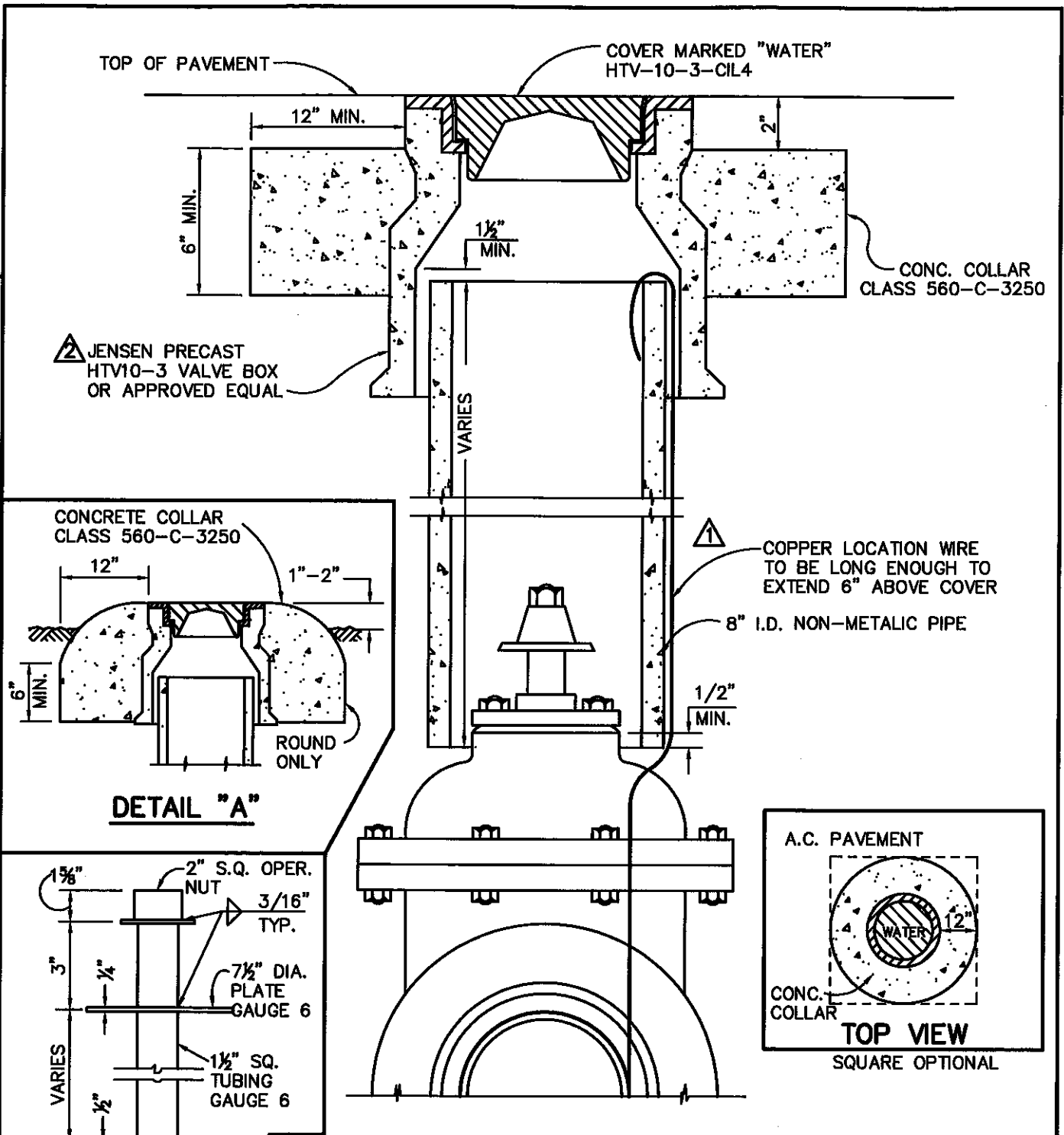


REV.	APPR. BY	DATE

REV.	APPR. BY	DATE
	L. Balderrama	09/10/10
	L. Balderrama	10/06/14



1. VALVE BOXES SET IN ROAD SHOULDERS, FIELDS, ETC. SHALL BE AS SHOWN ON DETAIL "A". (ROUND ONLY)
2. CONTRACTOR SHALL PROVIDE A VALVE STEM EXTENSION FOR EACH VALVE HAVING ITS OPERATOR NUT MORE THAN 40" BELOW FINISHED GRADE. TOP OF EXTENSION SHALL BE BETWEEN 18" AND 24" BELOW FINISHED GRADE. (SEE DETAIL "B")
3. FOR ANCHORAGE OF GATE VALVES REFER TO PLATE 302.

	VALVE BOX INSTALLATION		STANDARD PLAN 2002
	DRAWN: C. GIRON CKD.: R. HEARNE <i>Department of Public Works</i>	APPR. L. Balderrama, PE, City Engineer	PLATE 303 SHEET 1 OF 1