

# CITY OF OXNARD

---

*Fiscal Year 2023/24 Annual Report for:*

**COMMUNITY FACILITIES DISTRICT NO. 2000-3  
(OXNARD BOULEVARD/HIGHWAY 101  
INTERCHANGE)**

**December 2023**

Prepared by:



**Corporate Headquarters**  
32605 Temecula Parkway, Suite 100  
Temecula, CA 92592  
Toll free: 800.676.7516

# TABLE OF CONTENTS

---

<b>District Summary .....</b>	<b>5</b>
<b>1. SB 165: Local Agency Special Tax and Bond Accountability Act .....</b>	<b>7</b>
<b>2. Special Tax Analysis .....</b>	<b>8</b>
2.1 Levy Summary .....	8
2.2 Annual Special Tax Rate Increase.....	9
2.3 Special Tax Comparison.....	9
<b>3. Financial Status .....</b>	<b>10</b>
3.1 Fund Balances.....	10
3.2 Special Tax Fund .....	10
3.3 Reserve Fund – Series A .....	10
3.4 Reserve Fund – Series B .....	10
3.5 Assessed Value to Debt Ratio.....	11
3.6 Delinquency Summary .....	11
<b>Appendix A. District Boundary .....</b>	<b>A</b>
<b>Appendix B. Rate And Method Of Apportionment.....</b>	<b>B</b>
<b>Appendix C. Current Debt Service Schedule.....</b>	<b>C</b>
<b>Appendix D. Delinquency Summary Report.....</b>	<b>D</b>
<b>Appendix E. Final Billing Detail Report .....</b>	<b>E</b>

# DISTRICT SUMMARY

---

The City of Oxnard (the “City”) established Community Facilities District No. 2000-3 (Oxnard Boulevard/Highway 101 Interchange) (the “CFD”) in 2000 and issued bonds in 2003 to finance freeway interchange improvements at Oxnard Boulevard. The CFD is part of a coordinated financing solution to provide infrastructure improvements known as the Vineyard Avenue Johnson Drive Freeway Improvement Project. The four major components of the project include a new 12-lane bridge on Highway 101 over the Santa Clara River, extra lanes to Highway 101 between Vineyard Avenue and Montalvo railroad spur crossing, an elevated rail grade crossing at Johnson Drive, and a freeway interchange at Oxnard Boulevard. The improvements are expected to relieve traffic congestion on Highway 101 to Oxnard Boulevard near the CFD and improve access to businesses and surrounding areas.

On August 30, 2012, the City refunded the outstanding CFD bonds with the City of Oxnard Community Facilities District No. 2000-3 (Oxnard Boulevard/Highway 101 Interchange) Special Tax Refunding Bonds, Series 2012 (the “2012 Bonds”). The 2012 Bonds, along with the Community Facilities District No. 1 (Westport at Mandalay Bay) (“CFD No. 1”) of the City of Oxnard 2012 Special Tax Refunding Bonds and City of Oxnard Assessment District No. 2001-1 (Rice Avenue/Highway 101 Interchange) (“AD 2001-1”) Limited Obligation Improvement Refunding Bonds, Series 2012 were acquired by the City of Oxnard Financing Authority Local Obligation Revenue Bonds Series A and B (2012 Special District Bond Refinancings) (the “2012 Revenue Bonds”).

On July 14, 2022, the Authority issued the City of Oxnard Financing Authority 2022 Local Obligation Revenue Refunding Bonds (Special District Bonds) (the “2022 Revenue Bonds”) to refund the 2012 Revenue Bonds.

The City may levy the Special Tax on parcels in the CFD to satisfy the Special Tax Requirement as necessary until Fiscal Year 2041/42. However, the CFD 2012 Bonds mature with the final scheduled debt service payment on September 1, 2032. Therefore, the City anticipates the final levy to occur in Fiscal Year 2031/32 or whenever the bonds are fully redeemed.

## Levy

The following table provides a summary of the Fiscal Year 2023/24 final levy amount.

District	Parcel Count	FY 2023/24 Levy
CFD 2000-3 (Oxnard Blvd/Hwy 101 Interchange)	704	\$513,820.06

## Funds

The CFD’s improvements are complete and the City closed the Improvement Fund.

As of June 30, 2023, the Special Tax Fund had a balance of \$2,654,869. After considering the September 2023 debt service payment, and six months of administrative expenses, the Special Tax Fund has an approximate surplus of \$2.3M. The City should review the balance, with the assistance of NBS, and confirm the origination of the funds.

The Reserve Fund is held at the Revenue Bond level. The June 30, 2023 Reserve Fund balance meets the current reserve requirement.

The Surplus Fund held at the Revenue Bond level is utilized to provide property owner savings from the 2012 Revenue Bond refunding. Annually, after each semi-annual debt service payment is made, the Trustee is directed to deposit into the Surplus Account the amount then on deposit in the Revenue Fund. For purposes of calculating the Special Tax and Assessment levies for the District, CFD No. 1, and AD 2001-1 respectively for subsequent fiscal years, amounts on deposit in the Surplus Account shall be used to offset amounts required to be levied on the tax roll for the subsequent tax year.

The 2022 Revenue Bonds are subject to arbitrage rebate regulations. Arbitrage Compliance Specialists Inc. calculates the arbitrage rebate liability for the Revenue Bonds. The first fifth year arbitrage rebate calculation for the 2022 Revenue Bonds is due during calendar year 2026.

### **Delinquencies**

As of June 30, 2023, the Fiscal Year 2022/23 delinquency rate for the District is 0.15%, totaling \$861.72. Please refer to Appendix D for detailed information. NBS will continue to monitor the delinquencies and recommend the appropriate delinquency management actions to the City as needed.

### **NBS**

Amanda Welker, Administrator  
Adina McCargo, Project Manager  
Pablo Perez, Client Services Director

# 1. SB 165: LOCAL AGENCY SPECIAL TAX AND BOND ACCOUNTABILITY ACT

Senate Bill 165, filed with the Secretary of State on September 19, 2000, enacted the Local Agency Special Tax and Bond Accountability Act (the “Act”). This Act requires that any local special tax or local bond measure subject to voter approval contain a statement indicating the specific purposes of the special tax, require that the proceeds of the special tax be applied to those purposes, require the creation of an account into which the proceeds shall be deposited, and require an annual report containing specified information concerning the use of the proceeds. The Act only applies to any local special tax measure or local bond measure adopted on or after January 1, 2001, in accordance with Section 50075.1 or Section 53410 of the California Government Code.

Some of the requirements of the Act are handled at the formation of the Special Tax District and others are handled through annual reports. This Section of this report intends to comply with Sections 50075.1 and 53411 of the California Government Code that states:

“The chief fiscal officer of the issuing local agency shall file a report with its governing body no later than January 1, 2002, and at least once a year thereafter. The annual report shall contain both of the following:

1. The amount of funds collected and expended.
2. The status of any project required or authorized to be funded as identified in subdivision (a) of Sections 50075.1 and 53410.”

The requirements of the Act apply to the Funds for the following:

Community Facilities District No. 2000-3  
(Westport at Mandalay Bay) 2012 Refunding Bonds  
August 29, 2012

## Purpose of Special Tax

The special tax provides funding for the payment of principal and interest on any outstanding Bonds becoming due and payable during the ensuing calendar year, a necessary replenishment or expenditure of the Reserve Fund, and an amount estimated to be sufficient to pay the Administrative Expenses (including amounts necessary to discharge any rebate obligation) during the ensuing year.

The project is ongoing on an annual basis.

## Collections and Expenditures

Fund Name	Initial Deposit	6/30/2022 Balance	Total Amount Collected	6/30/2023 Balance	Amount Expended	Project Status
Special Tax Fund	\$0.00	\$3,210,434.73	\$575,448.00	\$2,765,069.47	\$1,020,813.26	Ongoing
Improvement Fund	\$8,858,705.36	0.00	0.00	0.00	\$8,858,705.36	Closed

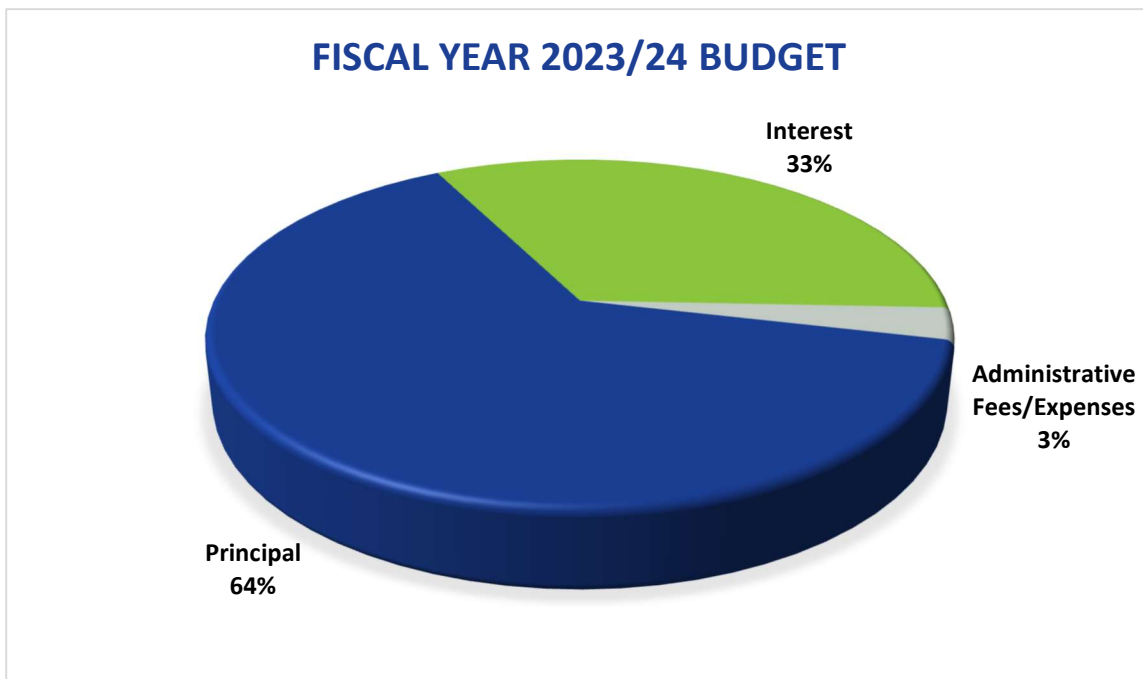
## 2. SPECIAL TAX ANALYSIS

### 2.1 Levy Summary

A summary of the levy for Fiscal Year 2023/24 is shown in the table and chart below.

Description	Amount
Principal	\$365,000.00
Interest	189,608.24
Administrative Fees/Expenses <sup>(1)</sup>	16,991.19
Levy Credit	(57,779.37)
<b>Total Special Tax Levy Amount:</b>	<b>\$513,820.06</b>
Levied Parcel Count	704

(1) Includes County collection fees and installment rounding for tax roll purposes.



## 2.2 Annual Special Tax Rate Increase

Per the Rate and Method of Apportionment (“RMA”) for CFD No. 2000-3, parcels are levied based on the Special Tax Rate Multiplier (“Multiplier”) in Section C of the RMA and are reallocated as parcels combine, subdivide, and payoff so that the total Special Tax Rate is equal to 1 (one). As the Special Tax Requirement (“Requirement”) is determined for the fiscal year, parcels are levied by calculating their individual Multiplier times the Requirement. The calculated levy may not exceed the Maximum Special Tax which is \$921,278.25 for the current Fiscal Year active parcels. The Maximum Special Tax has no inflator.

## 2.3 Special Tax Comparison

The Fiscal Year 2023/24 total maximum tax and total applied tax compared to the prior year are shown below.

Description	FY 2022/23			FY 2023/24			% Change in Applied Tax Rate <sup>(1)</sup>
	Maximum Special Tax	Applied Special Tax	% of Maximum	Maximum Special Tax	Applied Special Tax	% of Maximum	
Active	\$921,278.25	\$574,352.94	62.34%	\$921,278.25	\$513,820.06	55.77%	(10.54%)

(1) Represents the change between the current and prior year applied tax rates.

### 3. FINANCIAL STATUS

#### 3.1 Fund Balances

Fund	6/30/2023 Balance <sup>(1)</sup>
Improvement Fund	Closed
Special Tax Fund	\$2,765,069
Reserve Fund, 2022 Revenue Bonds	197,351
Surplus Account, 2022 Revenue Bonds	283,059

#### 3.2 Special Tax Fund

Description	Amount
<b>Special Tax Fund Balance 6/30/2023</b>	<b>\$2,765,069</b>
9/1/2023 Debt Service	(456,372)
9/1/2023 Bond Call	0.00
Estimated Administrative Expenses <sup>(1)</sup>	(8,500)
<b>Estimated Special Tax Fund Balance 12/2023</b>	<b>\$2,300,197</b>

(1) Represents six months of administrative expenses.

#### 3.3 Reserve Fund – 2022 Revenue Bonds

Description	Amount
<b>Reserve Fund Balance 6/30/2023</b>	<b>\$197,351</b>
Reserve Requirement <sup>(1)</sup>	197,351
<b>Estimated Reserve Fund Surplus/Deficit</b>	<b>\$0</b>

(1) Reserve Requirement is held with the Revenue Bonds and is equal to ten percent (10%) of the Maximum Annual Debt Service for the 2022 Revenue Bonds.

#### 3.4 Surplus Account – 2022 Revenue Bonds

Description	Amount
<b>Reserve Fund – Series B Balance 6/30/2023</b>	<b>\$721,250</b>
AD 2001-1 Share of Surplus Credit	(93,955)
CFD 1 Share of Surplus Credit	(83,081)
CFD 2000-3 Share of Surplus Credit	(57,779)

(1) Surplus Credits for levy purposes calculated as of the 4/30/2023 balance. Credits were applied to levy totals for each district as Local Obligation savings from the 2022 Revenue Bonds.



### 3.5 Assessed Value to Debt Ratio

Description	Amount
Assessed Value <sup>(1)</sup>	\$986,562,063
Principal of Debt Outstanding <sup>(2)</sup>	3,985,000
<b>Assessed Value to Debt Ratio</b>	<b>247.56:1</b>

(1) Land value plus improvement value of levied parcels within the District, per the County of Ventura secured property roll as of January 1, 2023..

(2) Debt outstanding after the September 2, 2023 debt service payment.

### 3.6 Delinquency Summary

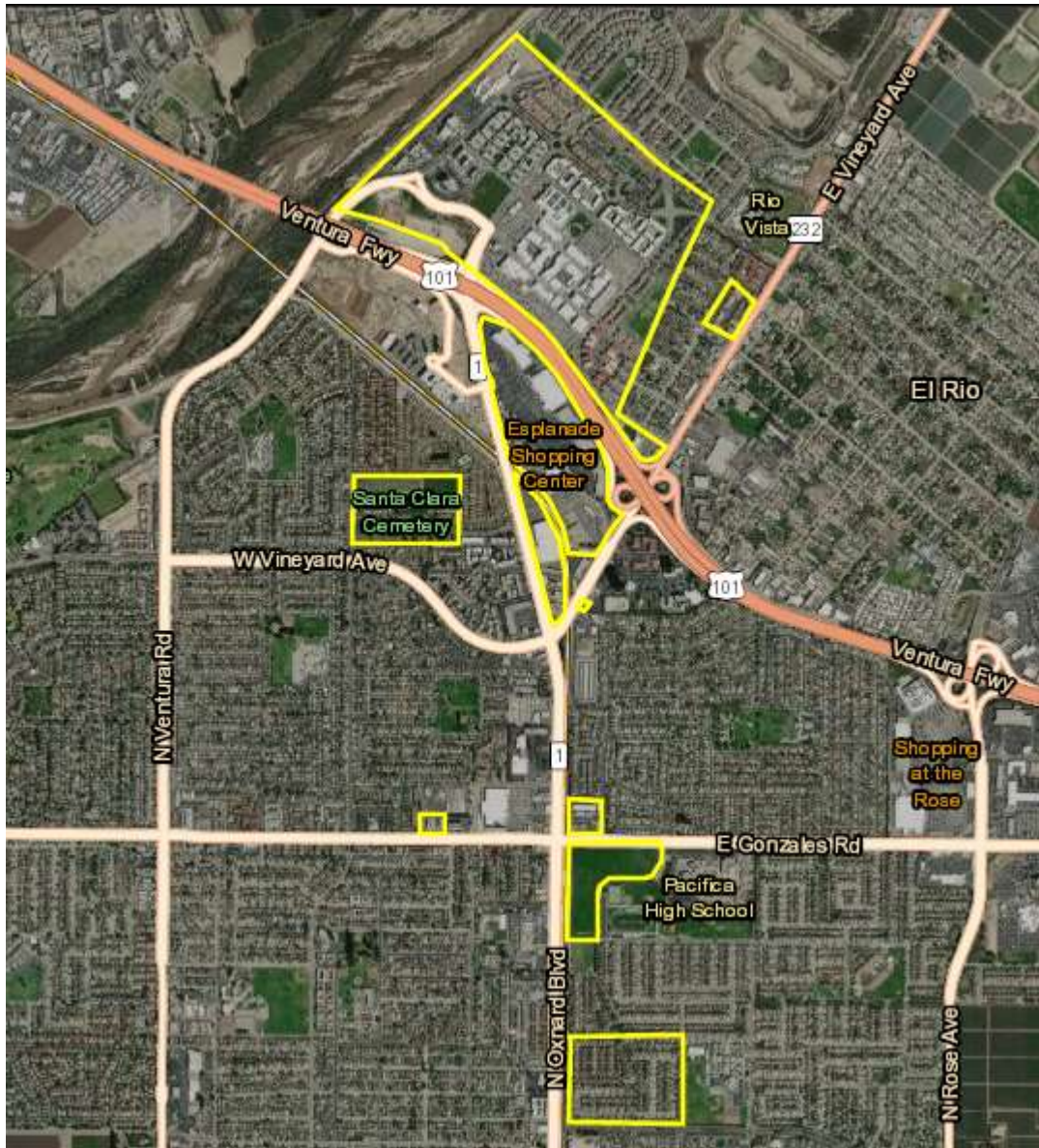
The following table summarizes the Fiscal Year 2022/23 delinquency rate for the District. Please refer to Appendix D for the District’s historical delinquency rates.

Description	Amount
Fiscal Year 2022/23 Amount Levied	\$574,352.94
Fiscal Year 2022/23 Amount Delinquent	861.72
<b>Fiscal Year 2022/23 Delinquency Rate</b>	<b>0.15%</b>

The Foreclosure Covenant is defined as follows:

The CFD has covenanted in the bond Indenture that, in the event, that any special tax installment levied on the parcels in the CFD is not paid when due, the CFD will, no later than October 1 in any year, file an action in the Superior Court of the County to foreclose the lien on each delinquent parcel, subject to the following: (i) if the CFD determines that there is a delinquency in the payment of special taxes of \$5,000 or more for a prior fiscal year or years for any single parcel of land in the CFD, foreclosure will be commenced against such parcel, and (ii) if the CFD determines that the total amount of the delinquent special taxes for the prior fiscal year for the entire CFD, less the total delinquencies under (i) above, exceeds 5% of the total special taxes due and payable in the prior fiscal year, foreclosure will be commenced against each parcel of land in the CFD with a delinquency of \$3,000 or more for the prior fiscal year or years.

# APPENDIX A. DISTRICT BOUNDARY



## APPENDIX B. RATE AND METHOD OF APPORTIONMENT

---

The following pages show the Rate and Method of Apportionment of the Special Tax.

## RATE AND METHOD OF APPORTIONMENT OF SPECIAL TAX

A Special Tax applicable to each Assessor's Parcel in Community Facilities District No. 2000-3 (Oxnard Blvd./ Highway 101 Interchange), City of Oxnard, Ventura County, California (herein CFD No. 2000-3), shall be levied and collected according to the tax liability determined by the City Council of the City of Oxnard or its designee, through the application of the appropriate amount or rate for Taxable Property, as described below. All of the property in CFD No. 2000-3, unless exempted by law, shall be taxed for the purposes, to the extent, and in the manner herein provided.

### A. DEFINITIONS

"Acre or Acreage" means the land of an Assessor's Parcel as shown on an Assessor's Parcel Map, or if the land area is not shown on an Assessor's Parcel Map, the land area shown on the applicable Final Map, parcel map, or other recorded County parcel map.

"Act" means the Mello-Roos Community Facilities Act of 1982, as amended, being Chapter 2.5, Division 2 of Title 5 of the Government Code of the State of California.

"Administrative Expenses" means any or all of the following: the fees and expenses of any fiscal agent or trustee (including any fees or expenses of its counsel) employed in connection with any Bonds of CFD No. 2000-3, and the expenses of the City in carrying out its duties for such Bonds, including, but not limited to, the levying and collection of the Special Tax, the fees and expenses of its counsel, charges levied by the County Auditor's Office, Tax Collector's Office, and/or Treasurer's Office, amounts needed to pay rebate to the federal government with respect to any of such bonds, costs associated with complying with continuing disclosure requirements, and all other costs and expenses of the City in any way related to the establishment or administration of CFD No. 2000-3.

"Administrator" shall mean the person or firm designated by the City to administer the Special Tax according to this Rate and Method of Apportionment of Special Tax.

"Annual Special Tax" means an amount levied in any Fiscal Year to pay the Special Tax Requirement.

"Assessor's Parcel" or "Parcel" means a lot or parcel shown on an Assessor's Parcel Map with an assigned Assessor's Parcel Number.

"Assessor's Parcel Map" means an official map of the County Assessor of the County of Ventura designating parcels by Assessor's Parcel Number.

"Bond Year" means the period from October 2 of any calendar year through October 1 of the following calendar year.

"Bonds" means any bonds or other debt (as defined in Section 53317(d) of the Act), whether in one or more series, issued by CFD No. 2000-3 under the Act.

"CFD No. 2000-3" means Community Facilities District No. 2000-3 (Oxnard Blvd./ Highway 101 Interchange), City of Oxnard, County of Ventura, State of California.

"Council" means the City Council, City of Oxnard, County of Ventura, State of California.

"District" means CFD No. 2000-3.

"Fiscal Year" means the period from July 1st of any calendar year through June 30th of the following calendar year.

"Interest Payment Dates" means April 1 and October 1 of each Bond Year during the term of the Bonds.

"Maximum Annual Special Tax" means the Maximum Annual Special Tax as defined in Section III.

"Prepayment Parcel" means any Parcel in the District on which the entire Special Tax Obligation is paid prior to the maturity of the Bonds.

"Property" means legal parcels (as of January 1 of the previous Fiscal Year, or later if adjustments are made after that date by the Ventura County Assessor and Treasurer/Tax Collector) of real property in private ownership within CFD No. 2000-3.

"Reserve Requirement" means the amount required for a fully funded Reserve Fund which is equal to the maximum annual debt service on the Bonds.

"Special Tax" means the special tax that may be levied on any Property for any Fiscal Year, and may be levied as long as necessary to discharge authorized Bond obligations of CFD No. 2000-3 or forty years after Fiscal Year 2001-2002 whichever comes earlier.

"Special Tax Obligation" means the total obligation of a Parcel or Parcels of Property to pay Special Taxes for the remaining life of CFD No. 2000-3.

"Special Tax Rate" means a parcel's portion of the total Special Tax Obligation as shown in Section III.

"Special Tax Requirement" is an amount to be determined annually by the Administrator for each Fiscal Year until the Special Tax Obligation is satisfied. It shall be comprised of the amount necessary to pay the authorized costs and expenses of CFD No. 2000-3 including Administrative Expenses of CFD No. 2000-3, to pay debt service on the bonds for the Bond Year commencing during such Fiscal Year, less all other amounts, from any lawful source, available for payment of these costs.

"Subsequent Parcel" means an Assessor's Parcel of Taxable Property created by the reconfiguration or subdivision of an existing Assessor's Parcel within CFD No. 2000-3.

"Taxable Property" means all of the Assessor's Parcels within the boundaries of CFD No. 2000-3 which are not exempt from the Special Tax pursuant to law.

## **B. DETERMINATION OF TAXABLE PARCELS**

On May 1 of each Fiscal Year, the Administrator shall determine whether the Assessor's Parcel Numbers are valid Parcel numbers for the current Fiscal Year. If any Parcel numbers are no longer valid, the Administrator shall determine the new Parcel number or numbers that are in effect for the Fiscal Year. To the extent a Parcel or Parcels are subdivided, consolidated or otherwise reconfigured, the Special Tax Rate shall be reallocated to the new Assessor's Parcels based upon net acreage. At no time shall a reconfiguration of any Assessor's Parcel in CFD No. 2000-3 result in a reduction of the total Maximum Annual Special Tax within CFD No. 2000-3.

### C. MAXIMUM ANNUAL SPECIAL TAX - METHOD OF APPORTIONMENT

All property shall be subject to a Maximum Annual Special Tax defined in the following Table.

The Special Tax shall be levied each Fiscal Year by the Administrator. The Special Tax Requirement shall be apportioned to each parcel within the District by the Special Tax Rate multiplier shown below.

APN	SPECIAL TAX RATE (%)	MAXIMUM SPECIAL TAX (\$)
132 0 020 200	0.032595512	37,567.60
132 0 020 210	0.000550573	634.56
132 0 020 220	0.002010788	2,317.51
132 0 020 240	0.001093167	1,259.92
132 0 020 260	0.002425713	2,795.73
132 0 020 375	0.081021991	93,381.00
132 0 020 385	0.161948230	186,651.65
132 0 020 395	0.310507165	357,871.59
132 0 031 060	0.000941559	1,085.18
132 0 031 120	0.002345919	2,703.76
132 0 032 010	0.001484153	1,710.54
132 0 032 050	0.000941559	1,085.18
132 0 032 080	0.000598449	689.74
132 0 032 090	0.000598449	689.74
132 0 032 100	0.000550573	634.56
132 0 032 120	0.000781973	901.25
132 0 032 130	0.000055855	64.38
132 0 032 145	0.001699595	1,958.85
132 0 032 155	0.000055855	64.38
132 0 060 050	0.000207462	239.11
132 0 060 145	0.001069229	1,232.33
132 0 060 155	0.000430883	496.61
132 0 100 045	0.004213080	4,855.74
132 0 100 055	0.007045737	8,120.49
132 0 100 085	0.002274106	2,621.00
132 0 100 095	0.005122722	5,904.14
132 0 100 105	0.009615078	11,081.75
132 0 100 115	0.002657113	3,062.43
132 0 100 145	0.000207462	239.11
132 0 100 155	0.013309502	15,339.72
139 0 050 140	0.000478759	551.79
139 0 050 225	0.000239380	275.89
139 0 250 035	0.014442565	16,645.62
142 0 010 065	0.000255338	294.29
142 0 010 205	0.005593502	6,446.73
142 0 010 215	0.001460215	1,682.95
142 0 010 255	0.000143628	165.54

APN	SPECIAL TAX RATE (%)	MAXIMUM SPECIAL TAX (\$)
142 0 010 275	0.019708914	22,715.29
142 0 010 295	0.000622387	717.33
142 0 010 305	0.004667901	5,379.94
142 0 010 325	0.042681370	49,191.94
142 0 010 345	0.016421436	18,926.35
142 0 010 375	0.000167566	193.13
142 0 010 385	0.000534614	616.16
142 0 010 395	0.002896492	3,338.32
142 0 010 405	0.005202515	5,996.10
142 0 010 415	0.000199483	229.91
142 0 010 425	0.002896492	3,338.32
142 0 010 435	0.034702052	39,995.47
142 0 010 455	0.042657432	49,164.35
142 0 010 475	0.001069229	1,232.33
142 0 021 010	0.010405030	11,992.20
142 0 021 070	0.005202515	5,996.10
142 0 021 080	0.002641154	3,044.03
142 0 021 100	0.000111710	128.75
142 0 021 120	0.003742300	4,313.15
142 0 021 160	0.003710383	4,276.36
142 0 021 170	0.007364910	8,488.35
142 0 022 535	0.019389742	22,347.43
142 0 022 575	0.048673837	56,098.50
142 0 235 140	0.004691839	5,407.53
142 0 235 150	0.006646772	7,660.66
142 0 235 160	0.004691839	5,407.53
142 0 235 170	0.001524050	1,756.53
215 0 030 040	0.024097539	27,773.35
215 0 010 100	0.011705659	13,491.23
<b>66 PARCELS</b>	<b>1.000000000%</b>	<b>\$1,152,539.00</b>

#### D. REALLOCATION OF THE MAXIMUM ANNUAL SPECIAL TAX

If a Parcel subdivides in future Fiscal Years, the Special Tax Rate of such Subsequent Parcels shall be determined by combining (if applicable) the Special Tax Rate of all affected Parcels and prorating the total Special Tax Rate of all affected parcels to each Subsequent Parcel according to net acreage.

If a parcel prepays the Special Tax Obligation, the Special Tax Rate for the remaining parcels shall be recalculated prorata so that the total Special Tax Rate for all remaining parcels equals exactly 1 (one).

#### E. FORMULA FOR PREPAYMENT OF SPECIAL TAX OBLIGATIONS

The entire Special Tax Obligation for a Parcel may be prepaid on any interest date by following the procedure set forth below: (There is no provision for a partial prepayment.)

- a. The Parcel must not be delinquent in any payment of Special Tax. Prepayment hereunder shall not relieve any property owner from paying those Special Taxes which have already become due and payable, and the Notice of Cancellation of Special Tax Lien shall not be recorded until those Special Taxes have been paid.
- b. A special Tax prepayment must be made at least sixty (60) days prior to the next Bond Interest Payment Date, or the payoff calculation will be adjusted to the following Interest Payment Date.
- c. Determine the Parcel's prorated share of its Special Tax responsibility by calculating the following, as of the payoff date.

$$(STR \times P) + (STR \times I) + C + AE - LC - RC = \text{Payoff Amount}$$

STR = Special Tax Rate per Section III

P = Total outstanding CFD No. 2000-3 Bond principal

I = Total Interest to the next bond call date

C = Call premium on the parcel's prepaid principal

AE = Administrative expenses related to the Bond call

LC = Levy Credit for Special Taxes paid on the current tax roll (includes Capitalized Interest funds)

RC = Reserve Fund Credit

- d. The percentage under "c" above regarding outstanding bond principal shall be applied to the total amount of outstanding bonded indebtedness of CFD No. 2000-3. The total amount of outstanding bonded indebtedness of CFD No. 2000-3 shall be calculated as of the date through which principal has already been paid (Do not include Special Taxes which have already become due and payable).
- e. The Parcel's share of interest to the next call date on the outstanding bonds as calculated in "c" above shall be determined by calculating the Parcel's prorated share of the total outstanding bond issue's interest for the applicable six (6) month interest period as determined in "b" above.
- f. A levy credit shall be given for Special Taxes paid on the current property tax roll in payment of the Parcel's prorated share of one half of that year's Special Tax levy (principal and interest) for the applicable prepayment interest period.
- g. A reserve fund credit shall be given to the extent that the maximum annual debt service on the bonds is reduced due to a bond call resulting from the parcel's prepayment. Bonds shall be called in such a way as to maintain the ratio of outstanding bonds to originally issued bonds in each annual series insofar as possible.

## F. EXEMPTIONS

Notwithstanding any other provision of this Rate and Method of Apportionment of Special Tax, no Annual Special Tax shall be levied on Public Property, except as otherwise provided in the "Engineer's Report for Financing Districts" prepared by Penfield and Smith.



## **G. INTERPRETATION OF RATE AND METHOD OF APPORTIONMENT**

The Council reserves the right to make minor administrative and technical changes to this document that do not materially affect the rate and method of apportioning the Maximum Annual Special Tax. In addition, the interpretation and application of any Section of this document shall be left to the Council's discretion.

## **H. MANNER AND DURATION OF SPECIAL TAX**

The Special Tax shall be collected in the same manner and at the same time as ordinary ad valorem property taxes, provided, however, that prepayments are permitted as set forth in Section F above and provided further that the City may directly bill the Special Tax, may collect the Annual Special Tax at a different time or in a different manner if needed to meet the financial obligations of CFD No. 2000-3, and may collect delinquent Annual Special Taxes through foreclosure or other available methods.

A Special Tax shall be levied and collected within CFD No. 2000-3 until the Bonds have been fully repaid, however, not to exceed forty years, commencing in Fiscal Year 2001-2002.

## APPENDIX C. CURRENT DEBT SERVICE SCHEDULE

---

The following pages show the current Local Obligation and 2022 Revenue Bonds debt service schedules.

**City of Oxnard**  
**CFD 2000-3, Series 2012 Refunding Bonds**  
**Current Debt Service Schedule**

Bonds Dated: 08/29/2012  
Bonds Issued: \$7,980,000.00

Payment Date	CUSIP	Interest Rate	Balance	Principal	Interest	Payment Total	Annual Total	Call Premium	Status
03/01/2013		2.0000%	\$7,980,000.00	\$0.00	\$165,332.47	\$165,332.47	\$0.00	3.0000%	Paid
09/01/2013		2.0000	7,980,000.00	285,000.00	163,515.63	448,515.63	613,848.10	3.0000	Paid
03/01/2014		2.0776	7,695,000.00	.00	160,665.63	160,665.63	.00	3.0000	Paid
09/01/2014		2.0776	7,695,000.00	290,000.00	160,665.63	450,665.63	611,331.26	3.0000	Paid
03/01/2015		3.0000	7,405,000.00	.00	157,653.13	157,653.13	.00	3.0000	Paid
03/01/2015		0.0000	7,405,000.00	245,000.00	.00	245,000.00	.00	0.0000	Bond Call
09/01/2015		3.0000	7,160,000.00	295,000.00	152,345.66	447,345.66	.00	3.0000	Paid
09/01/2015		0.0000	6,865,000.00	375,000.00	.00	375,000.00	1,224,998.79	0.0000	Bond Call
03/01/2016		3.0000	6,490,000.00	.00	139,871.22	139,871.22	.00	3.0000	Paid
09/01/2016		3.0000	6,490,000.00	280,000.00	139,871.22	419,871.22	559,742.44	3.0000	Paid
03/01/2017		3.0000	6,210,000.00	.00	135,671.22	135,671.22	.00	3.0000	Paid
09/01/2017		3.0000	6,210,000.00	285,000.00	135,671.22	420,671.22	556,342.44	3.0000	Paid
03/01/2018		3.7656	5,925,000.00	.00	131,396.22	131,396.22	.00	3.0000	Paid
09/01/2018		3.7656	5,925,000.00	290,000.00	131,396.22	421,396.22	552,792.44	3.0000	Paid
03/01/2019		3.8433	5,635,000.00	.00	125,936.05	125,936.05	.00	3.0000	Paid
09/01/2019		3.8433	5,635,000.00	305,000.00	125,936.05	430,936.05	556,872.10	3.0000	Paid
03/01/2020		3.3143	5,330,000.00	.00	120,075.05	120,075.05	.00	3.0000	Paid
09/01/2020		3.3143	5,330,000.00	320,000.00	120,075.05	440,075.05	560,150.10	2.0000	Paid
03/01/2021		4.0000	5,010,000.00	.00	114,772.19	114,772.19	.00	2.0000	Paid
09/01/2021		4.0000	5,010,000.00	330,000.00	114,772.19	444,772.19	559,544.38	1.0000	Paid
03/01/2022		4.0000	4,680,000.00	.00	108,172.19	108,172.19	.00	1.0000	Paid
09/01/2022		4.0000	4,680,000.00	340,000.00	108,172.19	448,172.19	556,344.38	0.0000	Paid
03/01/2023		3.7003	4,340,000.00	.00	101,372.19	101,372.19	.00	0.0000	Paid
09/01/2023		3.7003	4,340,000.00	355,000.00	101,372.19	456,372.19	557,744.38	0.0000	Paid
03/01/2024		3.8203	3,985,000.00	.00	94,804.12	94,804.12	.00	0.0000	Unpaid
09/01/2024		3.8203	3,985,000.00	365,000.00	94,804.12	459,804.12	554,608.24	0.0000	Unpaid
03/01/2025		3.9509	3,620,000.00	.00	87,832.04	87,832.04	.00	0.0000	Unpaid
09/01/2025		3.9509	3,620,000.00	385,000.00	87,832.04	472,832.04	560,664.08	0.0000	Unpaid
03/01/2026		4.8391	3,235,000.00	.00	80,226.55	80,226.55	.00	0.0000	Unpaid
09/01/2026		4.8391	3,235,000.00	395,000.00	80,226.55	475,226.55	555,453.10	0.0000	Unpaid
03/01/2027		4.8407	2,840,000.00	.00	70,669.37	70,669.37	.00	0.0000	Unpaid
09/01/2027		4.8407	2,840,000.00	415,000.00	70,669.37	485,669.37	556,338.74	0.0000	Unpaid
03/01/2028		5.0000	2,425,000.00	.00	60,625.00	60,625.00	.00	0.0000	Unpaid
09/01/2028		5.0000	2,425,000.00	445,000.00	60,625.00	505,625.00	566,250.00	0.0000	Unpaid
03/01/2029		5.0000	1,980,000.00	.00	49,500.00	49,500.00	.00	0.0000	Unpaid
09/01/2029		5.0000	1,980,000.00	460,000.00	49,500.00	509,500.00	559,000.00	0.0000	Unpaid
03/01/2030		5.0000	1,520,000.00	.00	38,000.00	38,000.00	.00	0.0000	Unpaid
09/01/2030		5.0000	1,520,000.00	480,000.00	38,000.00	518,000.00	556,000.00	0.0000	Unpaid
03/01/2031		5.0000	1,040,000.00	.00	26,000.00	26,000.00	.00	0.0000	Unpaid
09/01/2031		5.0000	1,040,000.00	505,000.00	26,000.00	531,000.00	557,000.00	0.0000	Unpaid
03/01/2032		5.0000	535,000.00	.00	13,375.00	13,375.00	.00	0.0000	Unpaid

**City of Oxnard**  
**CFD 2000-3, Series 2012 Refunding Bonds**  
**Current Debt Service Schedule**

Bonds Dated: 08/29/2012  
Bonds Issued: \$7,980,000.00

Payment Date	CUSIP	Interest Rate	Balance	Principal	Interest	Payment Total	Annual Total	Call Premium	Status
09/01/2032		5.0000	535,000.00	535,000.00	13,375.00	548,375.00	561,750.00	0.0000	Unpaid
<b>Grand Total:</b>				<b>\$7,980,000.00</b>	<b>\$3,956,774.97</b>	<b>\$11,936,774.97</b>	<b>\$11,936,774.97</b>		

# City of Oxnard

## 2022 Refunding Local Obligation Revenue Refunding Bonds (Special District Bonds)

### Current Debt Service Schedule

Bonds Dated: 07/14/2022

Bonds Issued: \$17,060,000.00

Payment Date	CUSIP	Interest Rate	Balance	Principal	Interest	Payment Total	Annual Total	Call Premium	Status
09/02/2022		3.2200%	\$17,060,000.00	\$1,567,000.00	\$73,244.27	\$1,640,244.27	\$1,640,244.27	0.0000%	Paid
03/02/2023		3.2200	15,493,000.00	.00	249,437.30	249,437.30	.00	3.0000	Paid
09/02/2023		3.2200	15,493,000.00	1,373,000.00	249,437.30	1,622,437.30	1,871,874.60	3.0000	Paid
03/02/2024		3.2200	14,120,000.00	.00	227,332.00	227,332.00	.00	3.0000	Unpaid
09/02/2024		3.2200	14,120,000.00	1,427,000.00	227,332.00	1,654,332.00	1,881,664.00	2.0000	Unpaid
03/02/2025		3.2200	12,693,000.00	.00	204,357.30	204,357.30	.00	2.0000	Unpaid
09/02/2025		3.2200	12,693,000.00	1,493,000.00	204,357.30	1,697,357.30	1,901,714.60	1.0000	Unpaid
03/02/2026		3.2200	11,200,000.00	.00	180,320.00	180,320.00	.00	1.0000	Unpaid
09/02/2026		3.2200	11,200,000.00	1,540,000.00	180,320.00	1,720,320.00	1,900,640.00	0.0000	Unpaid
03/02/2027		3.2200	9,660,000.00	.00	155,526.00	155,526.00	.00	0.0000	Unpaid
09/02/2027		3.2200	9,660,000.00	1,600,000.00	155,526.00	1,755,526.00	1,911,052.00	0.0000	Unpaid
03/02/2028		3.2200	8,060,000.00	.00	129,766.00	129,766.00	.00	0.0000	Unpaid
09/02/2028		3.2200	8,060,000.00	1,677,000.00	129,766.00	1,806,766.00	1,936,532.00	0.0000	Unpaid
03/02/2029		3.2200	6,383,000.00	.00	102,766.30	102,766.30	.00	0.0000	Unpaid
09/02/2029		3.2200	6,383,000.00	1,740,000.00	102,766.30	1,842,766.30	1,945,532.60	0.0000	Unpaid
03/02/2030		3.2200	4,643,000.00	.00	74,752.30	74,752.30	.00	0.0000	Unpaid
09/02/2030		3.2200	4,643,000.00	1,801,000.00	74,752.30	1,875,752.30	1,950,504.60	0.0000	Unpaid
03/02/2031		3.2200	2,842,000.00	.00	45,756.20	45,756.20	.00	0.0000	Unpaid
09/02/2031		3.2200	2,842,000.00	1,882,000.00	45,756.20	1,927,756.20	1,973,512.40	0.0000	Unpaid
03/02/2032		3.2200	960,000.00	.00	15,456.00	15,456.00	.00	0.0000	Unpaid
09/02/2032		3.2200	960,000.00	770,000.00	15,456.00	785,456.00	800,912.00	0.0000	Unpaid
03/02/2033		3.2200	190,000.00	.00	3,059.00	3,059.00	.00	0.0000	Unpaid
09/02/2033		3.2200	190,000.00	190,000.00	3,059.00	193,059.00	196,118.00	0.0000	Unpaid
<b>Grand Total:</b>				<b>\$17,060,000.00</b>	<b>\$2,850,301.07</b>	<b>\$19,910,301.07</b>	<b>\$19,910,301.07</b>		

# APPENDIX D. DELINQUENCY SUMMARY REPORT

---

The following pages show the current Delinquency Summary Report.

**City of Oxnard**  
**Delinquency Summary Report**  
As of: 06/30/2023

District	Due Date	Billed Amount	Paid Amount	Delinquent Amount	Delinquent Amount %	Billed Installments	Paid Installments	Delinquent Installments	Delinquent Installments %
<b>CFD 2000-3 - Oxnard Blvd/Highway 101 Interchange CFD 2000-3</b>									
<b>08/01/2003 Billing:</b>									
	12/10/2003	\$378,922.06	\$378,922.06	\$0.00	0.00%	60	60	0	0.00%
	04/10/2004	\$378,922.06	\$378,922.06	\$0.00	0.00%	60	60	0	0.00%
	<b>Subtotal:</b>	<b>\$757,844.12</b>	<b>\$757,844.12</b>	<b>\$0.00</b>	<b>0.00%</b>	<b>120</b>	<b>120</b>	<b>0</b>	<b>0.00%</b>
<b>08/01/2004 Billing:</b>									
	12/10/2004	\$381,428.43	\$381,428.43	\$0.00	0.00%	61	61	0	0.00%
	04/10/2005	\$381,428.43	\$381,428.43	\$0.00	0.00%	61	61	0	0.00%
	<b>Subtotal:</b>	<b>\$762,856.86</b>	<b>\$762,856.86</b>	<b>\$0.00</b>	<b>0.00%</b>	<b>122</b>	<b>122</b>	<b>0</b>	<b>0.00%</b>
<b>08/01/2005 Billing:</b>									
	12/10/2005	\$378,242.31	\$378,242.31	\$0.00	0.00%	85	85	0	0.00%
	04/10/2006	\$378,242.31	\$378,242.31	\$0.00	0.00%	85	85	0	0.00%
	<b>Subtotal:</b>	<b>\$756,484.62</b>	<b>\$756,484.62</b>	<b>\$0.00</b>	<b>0.00%</b>	<b>170</b>	<b>170</b>	<b>0</b>	<b>0.00%</b>
<b>08/01/2006 Billing:</b>									
	12/10/2006	\$382,746.96	\$382,746.96	\$0.00	0.00%	111	110	0	0.00%
	04/10/2007	\$382,746.96	\$382,746.96	\$0.00	0.00%	111	110	0	0.00%
	<b>Subtotal:</b>	<b>\$765,493.92</b>	<b>\$765,493.92</b>	<b>\$0.00</b>	<b>0.00%</b>	<b>222</b>	<b>220</b>	<b>0</b>	<b>0.00%</b>
<b>08/01/2007 Billing:</b>									
	12/10/2007	\$382,017.48	\$382,017.48	\$0.00	0.00%	294	293	0	0.00%
	04/10/2008	\$382,017.48	\$382,017.48	\$0.00	0.00%	294	293	0	0.00%
	<b>Subtotal:</b>	<b>\$764,034.96</b>	<b>\$764,034.96</b>	<b>\$0.00</b>	<b>0.00%</b>	<b>588</b>	<b>586</b>	<b>0</b>	<b>0.00%</b>
<b>08/01/2008 Billing:</b>									
	12/10/2008	\$384,527.48	\$384,527.48	\$0.00	0.00%	534	533	0	0.00%
	04/10/2009	\$384,527.48	\$384,527.48	\$0.00	0.00%	534	533	0	0.00%
	<b>Subtotal:</b>	<b>\$769,054.96</b>	<b>\$769,054.96</b>	<b>\$0.00</b>	<b>0.00%</b>	<b>1,068</b>	<b>1,066</b>	<b>0</b>	<b>0.00%</b>
<b>08/01/2009 Billing:</b>									
	12/10/2009	\$367,255.31	\$367,255.31	\$0.00	0.00%	540	533	0	0.00%
	04/10/2010	\$367,255.31	\$367,255.31	\$0.00	0.00%	540	533	0	0.00%
	<b>Subtotal:</b>	<b>\$734,510.62</b>	<b>\$734,510.62</b>	<b>\$0.00</b>	<b>0.00%</b>	<b>1,080</b>	<b>1,066</b>	<b>0</b>	<b>0.00%</b>

**City of Oxnard**  
**Delinquency Summary Report**  
As of: 06/30/2023

District	Due Date	Billed Amount	Paid Amount	Delinquent Amount	Delinquent Amount %	Billed Installments	Paid Installments	Delinquent Installments	Delinquent Installments %
<b>CFD 2000-3 - Oxnard Blvd/Highway 101 Interchange CFD 2000-3</b>									
<b>08/01/2010 Billing:</b>									
	12/10/2010	\$398,425.21	\$398,425.21	\$0.00	0.00%	626	626	0	0.00%
	04/10/2011	\$398,425.21	\$398,425.21	\$0.00	0.00%	626	626	0	0.00%
	<b>Subtotal:</b>	<b>\$796,850.42</b>	<b>\$796,850.42</b>	<b>\$0.00</b>	<b>0.00%</b>	<b>1,252</b>	<b>1,252</b>	<b>0</b>	<b>0.00%</b>
<b>08/01/2011 Billing:</b>									
	12/10/2011	\$364,336.67	\$364,336.67	\$0.00	0.00%	627	625	0	0.00%
	04/10/2012	\$364,336.67	\$364,336.67	\$0.00	0.00%	627	625	0	0.00%
	<b>Subtotal:</b>	<b>\$728,673.34</b>	<b>\$728,673.34</b>	<b>\$0.00</b>	<b>0.00%</b>	<b>1,254</b>	<b>1,250</b>	<b>0</b>	<b>0.00%</b>
<b>08/01/2012 Billing:</b>									
	12/10/2012	\$326,031.13	\$326,031.13	\$0.00	0.00%	626	626	0	0.00%
	04/10/2013	\$326,031.13	\$326,031.13	\$0.00	0.00%	626	626	0	0.00%
	<b>Subtotal:</b>	<b>\$652,062.26</b>	<b>\$652,062.26</b>	<b>\$0.00</b>	<b>0.00%</b>	<b>1,252</b>	<b>1,252</b>	<b>0</b>	<b>0.00%</b>
<b>08/01/2013 Billing:</b>									
	12/10/2013	\$322,988.48	\$322,988.48	\$0.00	0.00%	698	698	0	0.00%
	04/10/2014	\$322,988.48	\$322,988.48	\$0.00	0.00%	698	698	0	0.00%
	<b>Subtotal:</b>	<b>\$645,976.96</b>	<b>\$645,976.96</b>	<b>\$0.00</b>	<b>0.00%</b>	<b>1,396</b>	<b>1,396</b>	<b>0</b>	<b>0.00%</b>
<b>08/01/2014 Billing:</b>									
	12/10/2014	\$320,910.84	\$320,910.84	\$0.00	0.00%	739	739	0	0.00%
	04/10/2015	\$320,910.84	\$320,910.84	\$0.00	0.00%	739	739	0	0.00%
	<b>Subtotal:</b>	<b>\$641,821.68</b>	<b>\$641,821.68</b>	<b>\$0.00</b>	<b>0.00%</b>	<b>1,478</b>	<b>1,478</b>	<b>0</b>	<b>0.00%</b>
<b>08/01/2015 Billing:</b>									
	12/10/2015	\$295,587.99	\$295,587.99	\$0.00	0.00%	696	696	0	0.00%
	04/10/2016	\$295,587.99	\$295,587.99	\$0.00	0.00%	696	696	0	0.00%
	<b>Subtotal:</b>	<b>\$591,175.98</b>	<b>\$591,175.98</b>	<b>\$0.00</b>	<b>0.00%</b>	<b>1,392</b>	<b>1,392</b>	<b>0</b>	<b>0.00%</b>
<b>08/01/2016 Billing:</b>									
	12/10/2016	\$296,552.08	\$296,552.08	\$0.00	0.00%	699	699	0	0.00%
	04/10/2017	\$296,552.08	\$296,552.08	\$0.00	0.00%	699	699	0	0.00%
	<b>Subtotal:</b>	<b>\$593,104.16</b>	<b>\$593,104.16</b>	<b>\$0.00</b>	<b>0.00%</b>	<b>1,398</b>	<b>1,398</b>	<b>0</b>	<b>0.00%</b>



**City of Oxnard**  
**Delinquency Summary Report**  
As of: 06/30/2023

District	Due Date	Billed Amount	Paid Amount	Delinquent Amount	Delinquent Amount %	Billed Installments	Paid Installments	Delinquent Installments	Delinquent Installments %
<b>CFD 2000-3 - Oxnard Blvd/Highway 101 Interchange CFD 2000-3</b>									
<b>08/01/2017 Billing:</b>									
	12/10/2017	\$291,861.48	\$279,523.21	\$12,338.27	4.23%	700	698	2	0.29%
	04/10/2018	\$291,861.48	\$279,523.21	\$12,338.27	4.23%	700	698	2	0.29%
	<b>Subtotal:</b>	<b>\$583,722.96</b>	<b>\$559,046.42</b>	<b>\$24,676.54</b>	<b>4.23%</b>	<b>1,400</b>	<b>1,396</b>	<b>4</b>	<b>0.29%</b>
<b>08/01/2018 Billing:</b>									
	12/10/2018	\$299,490.28	\$286,829.53	\$12,660.75	4.23%	706	704	2	0.28%
	04/10/2019	\$299,490.28	\$286,829.53	\$12,660.75	4.23%	706	704	2	0.28%
	<b>Subtotal:</b>	<b>\$598,980.56</b>	<b>\$573,659.06</b>	<b>\$25,321.50</b>	<b>4.23%</b>	<b>1,412</b>	<b>1,408</b>	<b>4</b>	<b>0.28%</b>
<b>08/01/2019 Billing:</b>									
	12/10/2019	\$290,440.07	\$290,440.07	\$0.00	0.00%	704	704	0	0.00%
	04/10/2020	\$290,440.07	\$290,440.07	\$0.00	0.00%	704	704	0	0.00%
	<b>Subtotal:</b>	<b>\$580,880.14</b>	<b>\$580,880.14</b>	<b>\$0.00</b>	<b>0.00%</b>	<b>1,408</b>	<b>1,408</b>	<b>0</b>	<b>0.00%</b>
<b>08/01/2020 Billing:</b>									
	12/10/2020	\$298,750.94	\$298,750.94	\$0.00	0.00%	704	704	0	0.00%
	04/10/2021	\$298,750.94	\$298,750.94	\$0.00	0.00%	704	704	0	0.00%
	<b>Subtotal:</b>	<b>\$597,501.88</b>	<b>\$597,501.88</b>	<b>\$0.00</b>	<b>0.00%</b>	<b>1,408</b>	<b>1,408</b>	<b>0</b>	<b>0.00%</b>
<b>08/01/2021 Billing:</b>									
	12/10/2021	\$286,419.75	\$286,419.75	\$0.00	0.00%	704	704	0	0.00%
	04/10/2022	\$286,419.75	\$286,360.26	\$59.49	0.02%	704	703	1	0.14%
	<b>Subtotal:</b>	<b>\$572,839.50</b>	<b>\$572,780.01</b>	<b>\$59.49</b>	<b>0.01%</b>	<b>1,408</b>	<b>1,407</b>	<b>1</b>	<b>0.07%</b>
<b>08/01/2022 Billing:</b>									
	12/10/2022	\$287,176.47	\$286,745.61	\$430.86	0.15%	704	703	1	0.14%
	04/10/2023	\$287,176.47	\$286,745.61	\$430.86	0.15%	704	703	1	0.14%
	<b>Subtotal:</b>	<b>\$574,352.94</b>	<b>\$573,491.22</b>	<b>\$861.72</b>	<b>0.15%</b>	<b>1,408</b>	<b>1,406</b>	<b>2</b>	<b>0.14%</b>
<b>CFD 2000-3</b>	<b>Total:</b>	<b>\$13,468,222.84</b>	<b>\$13,417,303.59</b>	<b>\$50,919.25</b>	<b>0.38%</b>	<b>21,236</b>	<b>21,201</b>	<b>11</b>	<b>0.05%</b>
<b>Agency Grand Total:</b>		<b>\$13,468,222.84</b>	<b>\$13,417,303.59</b>	<b>\$50,919.25</b>	<b>0.38%</b>	<b>21,236</b>	<b>21,201</b>	<b>11</b>	<b>0.05%</b>

# APPENDIX E. FINAL BILLING DETAIL REPORT

---

The following pages show the Final Billing Detail Report for Fiscal Year 2023/24.

**City of Oxnard**  
**Oxnard Blvd/Highway 101 Interchange CFD 2000-3**  
**Final Billing Detail Report for Fiscal Year 2023/24**

APN	Site Address	Max Tax Rate	FY 23/24 Levy Total
132-0-033-055	VINEYARD AVE	\$380.56	\$212.24
132-0-033-075	VINEYARD AVE	378.87	211.30
132-0-033-095	110 RIVERPARK BLVD	2,767.31	1,543.42
132-0-033-105	210 RIVERPARK BLVD	4,271.87	2,382.56
132-0-060-050	2805 VINEYARD AVE	239.11	133.34
132-0-060-145	141 W STROUBE ST	1,232.33	687.30
132-0-060-155	2851 N VINEYARD AVE	496.61	276.96
132-0-100-085	VENTURA RD	2,621.00	1,461.80
132-0-100-095	VENTURA RD	5,904.14	3,292.92
132-0-100-105	1000 TOWN CENTER DR	11,081.75	6,180.66
132-0-100-165	2901 N VENTURA RD	15,319.54	8,544.22
132-0-100-175	VENTURA RD	20.18	11.24
132-0-100-185	2775 N VENTURA RD	6,738.28	3,758.16
132-0-100-235	2811 N VENTURA RD	741.07	413.30
132-0-100-245	2821 N VENTURA RD	741.07	413.30
132-0-100-255	2801 N VENTURA RD	1,382.21	770.90
132-0-110-175	TOWN CENTER DR	777.22	433.48
132-0-110-315	OXNARD BLVD	19,356.57	10,795.82
132-0-110-535	750 CLYDE RIVER PL	15,803.55	8,814.18
132-0-170-105		873.14	486.96
132-0-170-115		2,357.47	1,314.82
132-0-170-125	2905 ROCKY MOUNTAIN DR	582.09	324.64
132-0-170-135	2903 ROCKY MOUNTAIN DR	582.09	324.64
132-0-170-145	2901 ROCKY MOUNTAIN DR	582.09	324.64
132-0-170-155	2907 ROCKY MOUNTAIN DR	582.09	324.64
132-0-170-165	2909 ROCKY MOUNTAIN DR	582.09	324.64
132-0-170-175	2911 ROCKY MOUNTAIN DR	582.09	324.64
132-0-170-185	2925 ROCKY MOUNTAIN DR	654.85	365.22
132-0-170-195	2923 ROCKY MOUNTAIN DR	654.85	365.22
132-0-170-205	2921 ROCKY MOUNTAIN DR	654.85	365.22
132-0-170-215	2927 ROCKY MOUNTAIN DR	654.85	365.22
132-0-170-225	2929 ROCKY MOUNTAIN DR	654.85	365.22
132-0-170-235	2931 ROCKY MOUNTAIN DR	654.85	365.22
132-0-170-245	313 DANVERS RIVER ST	449.04	250.44
132-0-170-255	311 DANVERS RIVER ST	449.04	250.44
132-0-170-265	309 DANVERS RIVER ST	449.04	250.44
132-0-170-275	307 DANVERS RIVER ST	449.04	250.44
132-0-170-285	305 DANVERS RIVER ST	449.04	250.44
132-0-170-295	303 DANVERS RIVER ST	449.04	250.44
132-0-170-305	301 DANVERS RIVER ST	449.04	250.44
132-0-170-315	318 ELK RIVER ST	509.33	284.06
132-0-170-325	316 ELK RIVER ST	509.33	284.06

Slight variances may occur due to rounding

**City of Oxnard**  
**Oxnard Blvd/Highway 101 Interchange CFD 2000-3**  
**Final Billing Detail Report for Fiscal Year 2023/24**

APN	Site Address	Max Tax Rate	FY 23/24 Levy Total
132-0-170-335	314 ELK RIVER ST	509.33	284.06
132-0-170-345	312 ELK RIVER ST	509.33	284.06
132-0-170-355	310 ELK RIVER ST	509.33	284.06
132-0-170-365	308 ELK RIVER ST	509.33	284.06
132-0-170-375	373 FEATHER RIVER PL	561.30	313.04
132-0-170-385	371 FEATHER RIVER PL	561.30	313.04
132-0-170-395	369 FEATHER RIVER PL	561.30	313.04
132-0-170-405	367 FEATHER RIVER PL	561.30	313.04
132-0-170-415	365 FEATHER RIVER PL	561.30	313.04
132-0-170-425	363 FEATHER RIVER PL	561.30	313.04
132-0-170-435	361 FEATHER RIVER PL	561.30	313.04
132-0-170-445	355 FEATHER RIVER PL	561.30	313.04
132-0-170-455	353 FEATHER RIVER PL	561.30	313.04
132-0-170-465	351 FEATHER RIVER PL	561.30	313.04
132-0-170-475	349 FEATHER RIVER PL	561.30	313.04
132-0-170-485	347 FEATHER RIVER PL	561.30	313.04
132-0-170-495	345 FEATHER RIVER PL	561.30	313.04
132-0-170-505	343 FEATHER RIVER PL	561.30	313.04
132-0-170-515	341 FEATHER RIVER PL	480.22	267.82
132-0-170-525	339 FEATHER RIVER PL	480.22	267.82
132-0-170-535	337 FEATHER RIVER PL	480.22	267.82
132-0-170-545	335 FEATHER RIVER PL	480.22	267.82
132-0-170-555	333 FEATHER RIVER PL	480.23	267.82
132-0-170-565	331 FEATHER RIVER PL	480.23	267.82
132-0-170-575	321 FEATHER RIVER PL	611.20	340.88
132-0-170-585	319 FEATHER RIVER PL	611.20	340.88
132-0-170-595	317 FEATHER RIVER PL	611.20	340.88
132-0-170-605	315 FEATHER RIVER PL	611.19	340.86
132-0-170-615	316 FEATHER RIVER PL	582.09	324.64
132-0-170-625	318 FEATHER RIVER PL	582.09	324.64
132-0-170-635	320 FEATHER RIVER PL	582.09	324.64
132-0-170-645	319 ELK RIVER ST	567.54	316.52
132-0-170-655	317 ELK RIVER ST	567.54	316.52
132-0-170-665	315 ELK RIVER ST	567.54	316.52
132-0-170-675	313 ELK RIVER ST	567.54	316.52
132-0-180-175	351 FOREST PARK BLVD	372.59	207.80
132-0-180-185	349 FOREST PARK BLVD	372.59	207.80
132-0-180-195	347 FOREST PARK BLVD	372.59	207.80
132-0-180-205	345 FOREST PARK BLVD	372.59	207.80
132-0-180-215	343 FOREST PARK BLVD	372.59	207.80
132-0-180-225	341 FOREST PARK BLVD	372.59	207.80
132-0-180-235	335 FOREST PARK BLVD	372.59	207.80

Slight variances may occur due to rounding

**City of Oxnard**  
**Oxnard Blvd/Highway 101 Interchange CFD 2000-3**  
**Final Billing Detail Report for Fiscal Year 2023/24**

APN	Site Address	Max Tax Rate	FY 23/24 Levy Total
132-0-180-245	333 FOREST PARK BLVD	372.59	207.80
132-0-180-255	331 FOREST PARK BLVD	372.59	207.80
132-0-180-265	321 FOREST PARK BLVD	372.59	207.80
132-0-180-275	319 FOREST PARK BLVD	372.59	207.80
132-0-180-285	317 FOREST PARK BLVD	372.59	207.80
132-0-180-295	315 FOREST PARK BLVD	372.59	207.80
132-0-180-305	313 FOREST PARK BLVD	372.59	207.80
132-0-180-315	311 FOREST PARK BLVD	372.59	207.80
132-0-180-325	309 FOREST PARK BLVD	372.59	207.80
132-0-180-335	307 FOREST PARK BLVD	372.59	207.80
132-0-180-425	3032 SHENANDOAH DR	229.86	128.20
132-0-180-435	3022 SHENANDOAH DR	229.87	128.20
132-0-180-445	3012 SHENANDOAH DR	229.87	128.20
132-0-180-455	3002 SHENANDOAH DR	229.87	128.20
132-0-180-465	3003 SHENANDOAH DR	234.97	131.04
132-0-180-475	3013 SHENANDOAH DR	234.97	131.04
132-0-180-485	3023 SHENANDOAH DR	234.97	131.04
132-0-180-495	3033 SHENANDOAH DR	234.97	131.04
132-0-180-505	3043 SHENANDOAH DR	234.97	131.04
132-0-180-545	3034 ROIA LN	268.17	149.56
132-0-180-555	3024 ROIA LN	268.17	149.56
132-0-180-565	3014 ROIA LN	268.17	149.56
132-0-180-575	3004 ROIA LN	268.17	149.56
132-0-180-585	3005 ROIA LN	323.51	180.42
132-0-180-595	3015 ROIA LN	323.51	180.42
132-0-180-605	3025 ROIA LN	323.51	180.42
132-0-180-675	3026 PALISADES PARK DR	289.46	161.42
132-0-180-685	3016 PALISADES PARK DR	289.46	161.42
132-0-180-695	3006 PALISADES PARK DR	289.46	161.42
132-0-180-765	405 GARONNE ST	340.54	189.92
132-0-180-775	403 GARONNE ST	340.54	189.92
132-0-180-785	401 GARONNE ST	340.54	189.92
132-0-190-015	321 COLORADO RIVER PL	389.55	217.26
132-0-190-025	331 COLORADO RIVER PL	389.55	217.26
132-0-190-035	341 COLORADO RIVER PL	389.55	217.26
132-0-190-045	351 COLORADO RIVER PL	389.55	217.26
132-0-190-055	391 COLORADO RIVER PL	389.55	217.26
132-0-190-065	381 COLORADO RIVER PL	389.55	217.26
132-0-190-075	371 COLORADO RIVER PL	389.55	217.26
132-0-190-085	361 COLORADO RIVER PL	389.55	217.26
132-0-190-095	2800 RIVERPARK BLVD	389.55	217.26
132-0-190-105	2802 RIVERPARK BLVD	389.55	217.26

Slight variances may occur due to rounding

**City of Oxnard**  
**Oxnard Blvd/Highway 101 Interchange CFD 2000-3**  
**Final Billing Detail Report for Fiscal Year 2023/24**

APN	Site Address	Max Tax Rate	FY 23/24 Levy Total
132-0-190-115	2804 RIVERPARK BLVD	389.55	217.26
132-0-190-125	2820 RIVERPARK BLVD	389.55	217.26
132-0-190-135	2818 RIVERPARK BLVD	389.55	217.26
132-0-190-145	2816 RIVERPARK BLVD	389.55	217.26
132-0-190-155	2814 RIVERPARK BLVD	389.55	217.26
132-0-190-165	2812 RIVERPARK BLVD	389.55	217.26
132-0-190-175	2810 RIVERPARK BLVD	389.55	217.26
132-0-190-185	2821 SMOKY MOUNTAIN DR	389.55	217.26
132-0-190-195	2819 SMOKY MOUNTAIN DR	389.55	217.26
132-0-190-205	2817 SMOKY MOUNTAIN DR	389.55	217.26
132-0-190-215	2815 SMOKY MOUNTAIN DR	389.55	217.26
132-0-190-225	2813 SMOKY MOUNTAIN DR	389.55	217.26
132-0-190-235	2811 SMOKY MOUNTAIN DR	389.55	217.26
132-0-190-245	2801 SMOKY MOUNTAIN DR	389.55	217.26
132-0-190-255	2803 SMOKY MOUNTAIN DR	389.55	217.26
132-0-190-265	2805 SMOKY MOUNTAIN DR	389.55	217.26
132-0-190-275	2835 SMOKY MOUNTAIN DR	355.49	198.26
132-0-190-285	2833 SMOKY MOUNTAIN DR	355.49	198.26
132-0-190-295	2831 SMOKY MOUNTAIN DR	355.49	198.26
132-0-190-305	2830 RIVERPARK BLVD	355.49	198.26
132-0-190-315	2832 RIVERPARK BLVD	355.49	198.26
132-0-190-325	2834 RIVER PARK BLVD	355.49	198.26
132-0-190-335	392 DANVERS RIVER ST	355.49	198.26
132-0-190-345	382 DANVERS RIVER ST	355.49	198.26
132-0-190-355	372 DANVERS RIVER ST	355.49	198.26
132-0-190-365	362 DANVERS RIVER ST	355.49	198.26
132-0-190-375	322 DANVERS RIVER ST	355.49	198.26
132-0-190-385	332 DANVERS RIVER ST	355.49	198.26
132-0-190-395	342 DANVERS RIVER ST	355.49	198.26
132-0-190-405	352 DANVERS RIVER ST	355.49	198.26
132-0-200-015	2716 RIVERPARK BLVD	384.18	214.26
132-0-200-025	2714 RIVERPARK BLVD	384.18	214.26
132-0-200-035	2712 RIVERPARK BLVD	384.18	214.26
132-0-200-045	2710 RIVERPARK BLVD	384.18	214.26
132-0-200-055	2720 RIVERPARK BLVD	384.18	214.26
132-0-200-065	2722 RIVERPARK BLVD	384.18	214.26
132-0-200-075	2724 RIVERPARK BLVD	384.18	214.26
132-0-200-085	2726 RIVERPARK BLVD	384.18	214.26
132-0-200-095	2734 RIVERPARK BLVD	384.18	214.26
132-0-200-105	2732 RIVERPARK BLVD	384.18	214.26
132-0-200-115	2730 RIVERPARK BLVD	384.18	214.26
132-0-200-125	390 COLORADO RIVER PL	384.18	214.26

Slight variances may occur due to rounding

**City of Oxnard**  
**Oxnard Blvd/Highway 101 Interchange CFD 2000-3**  
**Final Billing Detail Report for Fiscal Year 2023/24**

APN	Site Address	Max Tax Rate	FY 23/24 Levy Total
132-0-200-135	380 COLORADO RIVER PL	384.18	214.26
132-0-200-145	370 COLORADO RIVER PL	384.18	214.26
132-0-200-155	360 COLORADO RIVER PL	384.18	214.26
132-0-200-165	320 COLORADO RIVER PL	384.18	214.26
132-0-200-175	330 COLORADO RIVER PL	384.18	214.26
132-0-200-185	340 COLORADO RIVER PL	384.18	214.26
132-0-200-195	350 COLORADO RIVER PL	384.18	214.26
132-0-200-205	2735 SMOKY MOUNTAIN DR	424.09	236.52
132-0-200-215	2733 SMOKY MOUNTAIN DR	424.09	236.52
132-0-200-225	2731 SMOKY MOUNTAIN DR	424.09	236.52
132-0-200-235	2721 SMOKY MOUNTAIN DR	424.09	236.52
132-0-200-245	2723 SMOKY MOUNTAIN DR	424.09	236.52
132-0-200-255	2725 SMOKY MOUNTAIN DR	424.09	236.52
132-0-200-265	2727 SMOKY MOUNTAIN DR	424.09	236.52
132-0-200-275	2717 SMOKY MOUNTAIN DR	424.09	236.52
132-0-200-285	2715 SMOKY MOUNTAIN DR	424.09	236.52
132-0-200-295	2713 SMOKY MOUNTAIN DR	424.09	236.52
132-0-200-305	2711 SMOKY MOUNTAIN DR	424.09	236.52
132-0-200-455	2701 SMOKY MOUNTAIN DR	424.09	236.52
132-0-200-465	2703 SMOKY MOUNTAIN DR	424.09	236.52
132-0-200-475	2705 SMOKY MOUNTAIN DR	424.09	236.52
132-0-200-485	2700 RIVERPARK BLVD	384.18	214.26
132-0-200-495	2702 RIVERPARK BLVD	384.18	214.26
132-0-200-505	2704 RIVERPARK BLVD	384.18	214.26
132-0-200-515	341 AMERICAN RIVER CT	384.18	214.26
132-0-200-525	343 AMERICAN RIVER CT	384.18	214.26
132-0-200-535	345 AMERICAN RIVER CT	384.18	214.26
132-0-200-545	347 AMERICAN RIVER CT	384.18	214.26
132-0-200-555	357 AMERICAN RIVER CT	384.18	214.26
132-0-200-565	355 AMERICAN RIVER CT	384.18	214.26
132-0-200-575	353 AMERICAN RIVER CT	384.18	214.26
132-0-200-585	351 AMERICAN RIVER CT	384.18	214.26
132-0-210-345	300 BIG SUR RIVER PL	353.62	197.22
132-0-210-355	302 BIG SUR RIVER PL	353.62	197.22
132-0-210-365	304 BIG SUR RIVER PL	353.62	197.22
132-0-210-375	306 BIG SUR RIVER PL	353.62	197.22
132-0-210-385	308 BIG SUR RIVER PL	353.62	197.22
132-0-210-395	310 BIG SUR RIVER PL	353.62	197.22
132-0-210-405	301 AMERICAN RIVER CT	353.62	197.22
132-0-210-415	303 AMERICAN RIVER CT	353.62	197.22
132-0-210-425	305 AMERICAN RIVER CT	353.62	197.22
132-0-210-435	307 AMERICAN RIVER CT	353.62	197.22

Slight variances may occur due to rounding

**City of Oxnard**  
**Oxnard Blvd/Highway 101 Interchange CFD 2000-3**  
**Final Billing Detail Report for Fiscal Year 2023/24**

APN	Site Address	Max Tax Rate	FY 23/24 Levy Total
132-0-210-445	309 AMERICAN RIVER CT	353.62	197.22
132-0-210-455	311 AMERICAN RIVER CT	353.62	197.22
132-0-210-465	312 BIG SUR RIVER PL	353.62	197.22
132-0-210-475	314 BIG SUR RIVER PL	353.62	197.22
132-0-210-495	318 BIG SUR RIVER PL	353.62	197.22
132-0-210-505	313 AMERICAN RIVER CT	353.62	197.22
132-0-210-515	315 AMERICAN RIVER CT	353.62	197.22
132-0-210-525	317 AMERICAN RIVER CT	353.62	197.22
132-0-210-535	319 AMERICAN RIVER CT	353.62	197.22
132-0-210-545	330 BIG SUR RIVER PL	341.98	190.72
132-0-210-555	328 BIG SUR RIVER PL	341.98	190.72
132-0-210-565	326 BIG SUR RIVER PL	341.98	190.72
132-0-210-575	324 BIG SUR RIVER PL	341.98	190.72
132-0-210-585	322 BIG SUR RIVER PL	341.98	190.72
132-0-210-595	320 BIG SUR RIVER PL	341.98	190.72
132-0-210-605	331 AMERICAN RIVER CT	341.98	190.72
132-0-210-615	329 AMERICAN RIVER CT	341.98	190.72
132-0-210-625	327 AMERICAN RIVER CT	341.98	190.72
132-0-210-635	325 AMERICAN RIVER CT	341.98	190.72
132-0-210-645	323 AMERICAN RIVER CT	341.98	190.72
132-0-210-655	321 AMERICAN RIVER CT	341.98	190.72
132-0-230-195	500 FOREST PARK	13,064.76	7,286.66
132-0-230-205	500 FOREST PARK BLVD	13,064.76	7,286.66
132-0-230-225	470 FOREST PARK BLVD	27,002.81	15,060.40
132-0-230-235	401 DANVERS RIVER DR	5,640.58	3,145.94
132-0-251-015	648 FLATHEAD RIVER ST	189.94	105.92
132-0-251-025	646 FLATHEAD RIVER ST	189.94	105.92
132-0-251-035	644 FLATHEAD RIVER ST	189.94	105.92
132-0-251-045	642 FLATHEAD RIVER ST	189.94	105.92
132-0-251-055	640 FLATHEAD RIVER ST	189.94	105.92
132-0-251-065	638 FLATHEAD RIVER ST	189.94	105.92
132-0-251-075	636 FLATHEAD RIVER ST	189.94	105.92
132-0-251-085	634 FLATHEAD RIVER ST	189.94	105.92
132-0-251-095	632 FLATHEAD RIVER ST	189.94	105.92
132-0-251-105	630 FLATHEAD RIVER ST	189.94	105.92
132-0-251-115	628 FLATHEAD RIVER ST	189.94	105.92
132-0-251-125	626 FLATHEAD RIVER ST	189.94	105.92
132-0-251-135	624 FLATHEAD RIVER ST	189.94	105.92
132-0-251-145	622 FLATHEAD RIVER ST	189.94	105.92
132-0-251-155	620 FLATHEAD RIVER ST	189.94	105.92
132-0-251-165	614 FLATHEAD RIVER ST	189.94	105.92
132-0-251-175	612 FLATHEAD RIVER ST	189.94	105.92

Slight variances may occur due to rounding



**City of Oxnard**  
**Oxnard Blvd/Highway 101 Interchange CFD 2000-3**  
**Final Billing Detail Report for Fiscal Year 2023/24**

APN	Site Address	Max Tax Rate	FY 23/24 Levy Total
132-0-251-185	610 FLATHEAD RIVER ST	189.94	105.92
132-0-251-195	608 FLATHEAD RIVER ST	189.94	105.92
132-0-251-205	606 FLATHEAD RIVER ST	189.94	105.92
132-0-251-215	604 FLATHEAD RIVER ST	189.94	105.92
132-0-251-225	602 FLATHEAD RIVER ST	189.94	105.92
132-0-251-235	600 FLATHEAD RIVER ST	189.94	105.92
132-0-251-245	514 FLATHEAD RIVER ST	189.94	105.92
132-0-251-255	512 FLATHEAD RIVER ST	189.94	105.92
132-0-251-265	510 FLATHEAD RIVER ST	189.94	105.92
132-0-251-275	508 FLATHEAD RIVER ST	189.94	105.92
132-0-251-285	506 FLATHEAD RIVER ST	189.94	105.92
132-0-251-295	504 FLATHEAD RIVER ST	189.94	105.92
132-0-251-305	502 FLATHEAD RIVER ST	189.94	105.92
132-0-251-315	500 FLATHEAD RIVER ST	189.94	105.92
132-0-251-325	3007 MOONLIGHT PARK AVE	482.31	268.98
132-0-251-335	3005 MOONLIGHT PARK AVE	482.31	268.98
132-0-251-345	3003 MOONLIGHT PARK AVE	482.31	268.98
132-0-251-355	3001 MOONLIGHT PARK AVE	482.31	268.98
132-0-251-365	639 FOREST PARK BLVD	277.70	154.86
132-0-251-375	637 FOREST PARK BLVD	277.70	154.86
132-0-251-385	635 FOREST PARK BLVD	277.70	154.86
132-0-251-395	633 FOREST PARK BLVD	277.70	154.86
132-0-251-405	631 FOREST PARK BLVD	277.70	154.86
132-0-251-415	629 FOREST PARK BLVD	277.70	154.86
132-0-251-425	627 FOREST PARK BLVD	277.70	154.86
132-0-251-435	625 FOREST PARK BLVD	277.70	154.86
132-0-251-445	623 FOREST PARK BLVD	277.70	154.86
132-0-251-455	621 FOREST PARK BLVD	277.70	154.86
132-0-251-465	519 FOREST PARK BLVD	277.70	154.86
132-0-251-475	517 FOREST PARK BLVD	277.70	154.86
132-0-251-485	515 FOREST PARK BLVD	277.70	154.86
132-0-251-495	513 FOREST PARK BLVD	277.70	154.86
132-0-251-505	511 FOREST PARK BLVD	277.70	154.86
132-0-251-515	509 FOREST PARK BLVD	277.70	154.86
132-0-251-525	507 FOREST PARK BLVD	277.70	154.86
132-0-251-535	505 FOREST PARK BLVD	277.70	154.86
132-0-251-545	503 FOREST PARK BLVD	277.70	154.86
132-0-251-555	501 FOREST PARK BLVD	277.70	154.86
132-0-251-565	617 FOREST PARK BLVD	277.70	154.86
132-0-251-575	615 FOREST PARK BLVD	277.70	154.86
132-0-251-585	613 FOREST PARK BLVD	277.70	154.86
132-0-251-595	611 FOREST PARK BLVD	277.70	154.86

Slight variances may occur due to rounding

**City of Oxnard**  
**Oxnard Blvd/Highway 101 Interchange CFD 2000-3**  
**Final Billing Detail Report for Fiscal Year 2023/24**

APN	Site Address	Max Tax Rate	FY 23/24 Levy Total
132-0-251-605	609 FOREST PARK BLVD	277.70	154.86
132-0-251-615	607 FOREST PARK BLVD	277.70	154.86
132-0-251-625	605 FOREST PARK BLVD	277.70	154.86
132-0-251-635	603 FOREST PARK BLVD	277.70	154.86
132-0-251-645	601 FOREST PARK BLVD	277.70	154.86
132-0-251-655	3008 N OXNARD BLVD	277.70	154.86
132-0-251-665	3010 N OXNARD BLVD	277.70	154.86
132-0-251-675	3012 N OXNARD BLVD	277.70	154.86
132-0-251-685	3014 N OXNARD BLVD	277.70	154.86
132-0-252-015	614 GREEN RIVER ST	189.94	105.92
132-0-252-025	612 GREEN RIVER ST	189.94	105.92
132-0-252-035	610 GREEN RIVER ST	189.94	105.92
132-0-252-045	608 GREEN RIVER ST	189.94	105.92
132-0-252-055	606 GREEN RIVER ST	189.94	105.92
132-0-252-065	604 GREEN RIVER ST	189.94	105.92
132-0-252-075	602 GREEN RIVER ST	189.94	105.92
132-0-252-085	3025 MOSS LANDING BLVD	189.94	105.92
132-0-252-095	3023 MOSS LANDING BLVD	189.94	105.92
132-0-252-105	3021 MOSS LANDING BLVD	189.94	105.92
132-0-252-115	3019 MOSS LANDING BLVD	189.94	105.92
132-0-252-125	3017 MOSS LANDING BLVD	189.94	105.92
132-0-252-135	3015 MOSS LANDING BLVD	189.94	105.92
132-0-252-145	3013 MOSS LANDING BLVD	189.94	105.92
132-0-252-155	3011 MOSS LANDING BLVD	189.94	105.92
132-0-252-165	603 FLATHEAD RIVER ST	189.94	105.92
132-0-252-175	605 FLATHEAD RIVER ST	189.94	105.92
132-0-252-185	607 FLATHEAD RIVER ST	189.94	105.92
132-0-252-195	609 FLATHEAD RIVER ST	189.94	105.92
132-0-252-205	611 FLATHEAD RIVER ST	189.94	105.92
132-0-252-215	613 FLATHEAD RIVER ST	189.94	105.92
132-0-252-225	615 FLATHEAD RIVER ST	189.94	105.92
132-0-252-235	646 GREEN RIVER ST	189.94	105.92
132-0-252-245	644 GREEN RIVER ST	189.94	105.92
132-0-252-255	642 GREEN RIVER ST	189.94	105.92
132-0-252-265	640 GREEN RIVER ST	189.94	105.92
132-0-252-275	638 GREEN RIVER ST	189.94	105.92
132-0-252-285	636 GREEN RIVER ST	189.94	105.92
132-0-252-295	634 GREEN RIVER ST	189.94	105.92
132-0-252-305	630 GREEN RIVER ST	189.94	105.92
132-0-252-315	628 GREEN RIVER ST	189.94	105.92
132-0-252-325	624 GREEN RIVER ST	189.94	105.92
132-0-252-335	622 GREEN RIVER ST	189.94	105.92

Slight variances may occur due to rounding

**City of Oxnard**  
**Oxnard Blvd/Highway 101 Interchange CFD 2000-3**  
**Final Billing Detail Report for Fiscal Year 2023/24**

APN	Site Address	Max Tax Rate	FY 23/24 Levy Total
132-0-252-345	620 GREEN RIVER ST	189.94	105.92
132-0-252-355	625 FLATHEAD RIVER ST	189.94	105.92
132-0-252-365	627 FLATHEAD RIVER ST	189.94	105.92
132-0-252-375	629 FLATHEAD RIVER ST	189.94	105.92
132-0-252-385	631 FLATHEAD RIVER ST	189.94	105.92
132-0-252-395	633 FLATHEAD RIVER ST	189.94	105.92
132-0-252-405	637 FLATHEAD RIVER ST	189.94	105.92
132-0-252-415	639 FLATHEAD RIVER ST	189.94	105.92
132-0-252-425	641 FLATHEAD RIVER ST	189.94	105.92
132-0-252-435	643 FLATHEAD RIVER ST	189.94	105.92
132-0-252-445	645 FLATHEAD RIVER ST	189.94	105.92
132-0-252-455	647 FLATHEAD RIVER ST	189.94	105.92
132-0-252-465	649 FLATHEAD RIVER ST	189.94	105.92
132-0-252-475	3020 N OXNARD BLVD	262.94	146.64
132-0-252-485	3022 N OXNARD BLVD	262.94	146.64
132-0-252-495	3024 N OXNARD BLVD	262.94	146.64
132-0-252-505	3026 N OXNARD BLVD	262.94	146.64
132-0-252-515	3028 N OXNARD BLVD	262.94	146.64
132-0-252-525	3030 N OXNARD BLVD	262.94	146.64
132-0-252-535	3032 N OXNARD BLVD	262.94	146.64
132-0-260-015	416 GREEN RIVER ST	194.07	108.22
132-0-260-025	414 GREEN RIVER ST	194.07	108.22
132-0-260-035	412 GREEN RIVER ST	194.07	108.22
132-0-260-045	410 GREEN RIVER ST	194.07	108.22
132-0-260-055	408 GREEN RIVER ST	194.07	108.22
132-0-260-065	407 FLATHEAD RIVER ST	194.07	108.22
132-0-260-075	417 FLATHEAD RIVER ST	194.07	108.22
132-0-260-085	427 FLATHEAD RIVER ST	194.07	108.22
132-0-260-095	437 FLATHEAD RIVER ST	194.07	108.22
132-0-260-105	447 FLATHEAD RIVER ST	194.07	108.22
132-0-260-115	457 FLATHEAD RIVER ST	194.07	108.22
132-0-260-125	3010 MOONLIGHT PARK AVE	194.07	108.22
132-0-260-135	3012 MOONLIGHT PARK AVE	194.07	108.22
132-0-260-145	3014 MOONLIGHT PARK AVE	194.07	108.22
132-0-260-155	3016 MOONLIGHT PARK AVE	194.07	108.22
132-0-260-165	3018 MOONLIGHT PARK AVE	194.07	108.22
132-0-260-175	3020 MOONLIGHT PARK AVE	194.07	108.22
132-0-260-185	3022 MOONLIGHT PARK AVE	194.07	108.22
132-0-260-195	406 GARONNE ST	328.43	183.16
132-0-260-205	404 GARONNE ST	328.43	183.16
132-0-260-215	402 GARONNE ST	328.43	183.16
132-0-260-225	400 GARONNE ST	328.43	183.16

Slight variances may occur due to rounding

**City of Oxnard**  
**Oxnard Blvd/Highway 101 Interchange CFD 2000-3**  
**Final Billing Detail Report for Fiscal Year 2023/24**

APN	Site Address	Max Tax Rate	FY 23/24 Levy Total
132-0-260-235	401 FOREST PARK BLVD	328.43	183.16
132-0-260-245	403 FOREST PARK BLVD	328.43	183.16
132-0-260-255	405 FOREST PARK BLVD	328.43	183.16
132-0-260-265	407 FOREST PARK BLVD	328.43	183.16
132-0-260-275	409 FOREST PARK BLVD	328.43	183.16
132-0-260-285	411 FOREST PARK BLVD	328.43	183.16
132-0-260-295	413 FOREST PARK BLVD	328.43	183.16
132-0-260-305	415 FOREST PARK BLVD	328.43	183.16
132-0-260-315	417 FOREST PARK BLVD	328.43	183.16
132-0-260-355	421 FOREST PARK BLVD	352.57	196.62
132-0-260-365	423 FOREST PARK BLVD	352.57	196.62
132-0-260-375	425 FOREST PARK BLVD	352.57	196.62
132-0-260-385	427 FOREST PARK BLVD	352.57	196.62
132-0-260-395	3006 MOONLIGHT PARK AVE	352.57	196.62
132-0-260-405	3004 MOONLIGHT PARK AVE	352.57	196.62
132-0-260-415	3002 MOONLIGHT PARK AVE	352.57	196.62
132-0-260-425	3000 MOONLIGHT PARK AVE	352.57	196.62
132-0-260-435	431 FOREST PARK BLVD	352.57	196.62
132-0-260-445	433 FOREST PARK BLVD	352.57	196.62
132-0-260-455	435 FOREST PARK BLVD	352.57	196.62
132-0-260-465	437 FOREST PARK BLVD	352.57	196.62
132-0-260-475	439 FOREST PARK BLVD	352.57	196.62
132-0-260-485	441 FOREST PARK BLVD	352.57	196.62
132-0-260-495	443 FOREST PARK BLVD	352.57	196.62
132-0-260-505		1,115.93	622.38
132-0-271-155	714 FLATHEAD RIVER ST	191.36	106.72
132-0-271-165	712 FLATHEAD RIVER ST	191.36	106.72
132-0-271-175	710 FLATHEAD RIVER ST	191.36	106.72
132-0-271-185	708 FLATHEAD RIVER ST	191.36	106.72
132-0-271-195	706 FLATHEAD RIVER ST	191.36	106.72
132-0-271-205	704 FLATHEAD RIVER ST	191.36	106.72
132-0-271-215	702 FLATHEAD RIVER ST	191.36	106.72
132-0-271-285	3013 OXNARD BLVD	334.02	186.28
132-0-271-295	3011 OXNARD BLVD	334.02	186.28
132-0-271-305	3009 OXNARD BLVD	334.02	186.28
132-0-271-315	3007 OXNARD BLVD	334.02	186.28
132-0-271-325	701 FOREST PARK BLVD	334.02	186.28
132-0-271-335	703 FOREST PARK BLVD	334.02	186.28
132-0-271-345	705 BLANK PURSUANT - CA GC62 BLVD	334.02	186.28
132-0-271-355	707 FOREST PARK BLVD	334.02	186.28
132-0-271-365	709 FOREST PARK BLVD	334.02	186.28

Slight variances may occur due to rounding

**City of Oxnard**  
**Oxnard Blvd/Highway 101 Interchange CFD 2000-3**  
**Final Billing Detail Report for Fiscal Year 2023/24**

APN	Site Address	Max Tax Rate	FY 23/24 Levy Total
132-0-271-375	711 FOREST PARK BLVD	334.02	186.28
132-0-271-385	713 FOREST PARK BLVD	334.02	186.28
132-0-271-395	717 FOREST PARK BLVD	334.02	186.28
132-0-271-405	719 FOREST PARK BLVD	334.02	186.28
132-0-271-415	721 FOREST PARK BLVD	334.02	186.28
132-0-271-425	723 FOREST PARK BLVD	334.02	186.28
132-0-271-435	725 FOREST PARK BLVD	334.02	186.28
132-0-271-445	727 FOREST PARK BLVD	334.02	186.28
132-0-271-455	729 FOREST PARK BLVD	334.02	186.28
132-0-271-465	731 FOREST PARK BLVD	334.02	186.28
132-0-271-475	735 FOREST PARK BLVD	334.02	186.28
132-0-271-485	737 FOREST PARK BLVD	334.02	186.28
132-0-271-495	749 FOREST PARK BLVD	334.02	186.28
132-0-271-505	751 FOREST PARK BLVD	334.02	186.28
132-0-271-515	753 FOREST PARK BLVD	334.02	186.28
132-0-271-525	755 FOREST PARK BLVD	334.02	186.28
132-0-271-535	757 FOREST PARK BLVD	334.02	186.28
132-0-271-545	759 FOREST PARK BLVD	334.02	186.28
132-0-271-555	761 FOREST PARK BLVD	334.02	186.28
132-0-271-565	763 FOREST PARK BLVD	334.02	186.28
132-0-271-575	765 FOREST PARK BLVD	334.02	186.28
132-0-271-585	3010 VENTURA RD	334.02	186.28
132-0-271-595	3012 VENTURA RD	334.02	186.28
132-0-271-605	3014 VENTURA RD	334.02	186.28
132-0-271-615	3016 VENTURA RD	334.02	186.28
132-0-272-375	3033 OXNARD BLVD	277.71	154.88
132-0-272-385	3031 OXNARD BLVD	277.71	154.88
132-0-272-395	3029 OXNARD BLVD	277.71	154.88
132-0-272-405	3027 OXNARD BLVD	277.71	154.88
132-0-272-415	3025 OXNARD BLVD	277.71	154.88
132-0-272-425	3023 OXNARD BLVD	277.71	154.88
132-0-272-435	3021 OXNARD BLVD	277.70	154.88
132-0-280-015	470 GARONNE ST	230.46	128.52
132-0-280-025	468 GARONNE ST	230.46	128.52
132-0-280-035	466 GARONNE ST	230.46	128.52
132-0-280-045	464 GARONNE ST	230.46	128.52
132-0-280-055	462 GARONNE ST	230.46	128.52
132-0-280-065	460 GARONNE ST	230.46	128.52
132-0-280-075	430 GARONNE ST	230.46	128.52
132-0-280-085	428 GARONNE ST	230.46	128.52
132-0-280-095	426 GARONNE ST	230.46	128.52
132-0-280-105	424 GARONNE ST	230.46	128.52

Slight variances may occur due to rounding

**City of Oxnard**  
**Oxnard Blvd/Highway 101 Interchange CFD 2000-3**  
**Final Billing Detail Report for Fiscal Year 2023/24**

APN	Site Address	Max Tax Rate	FY 23/24 Levy Total
132-0-280-115	422 GARONNE ST	230.46	128.52
132-0-280-125	420 GARONNE ST	230.46	128.52
132-0-280-135	421 GREEN RIVER ST	230.46	128.52
132-0-280-145	423 GREEN RIVER ST	230.46	128.52
132-0-280-155	425 GREEN RIVER ST	230.46	128.52
132-0-280-165	427 GREEN RIVER ST	230.46	128.52
132-0-280-175	429 GREEN RIVER ST	230.46	128.52
132-0-280-185	431 GREEN RIVER ST	230.46	128.52
132-0-280-195	461 BLANK PURSUANT - CA GC62 ST	230.46	128.52
132-0-280-205	463 GREEN RIVER ST	230.46	128.52
132-0-280-215	465 GREEN RIVER ST	230.46	128.52
132-0-280-225	467 GREEN RIVER ST	230.46	128.52
132-0-280-235	469 GREEN RIVER ST	230.46	128.52
132-0-280-245	471 GREEN RIVER ST	230.46	128.52
132-0-290-075	530 GARONNE ST	211.42	117.90
132-0-290-085	528 GARONNE ST	211.42	117.90
132-0-290-095	526 GARONNE ST	211.42	117.90
132-0-290-105	524 GARONNE ST	211.42	117.90
132-0-290-115	522 GARONNE ST	211.42	117.90
132-0-290-125	520 GARONNE ST	211.42	117.90
132-0-290-135	521 GREEN RIVER ST	211.42	117.90
132-0-290-145	523 GREEN RIVER ST	211.42	117.90
132-0-290-155	525 GREEN RIVER ST	211.42	117.90
132-0-290-165	527 GREEN RIVER ST	211.42	117.90
132-0-290-175	529 GREEN RIVER ST	211.42	117.90
132-0-290-185	531 GREEN RIVER ST	211.42	117.90
132-0-311-035	SEAGLASS WAY	10,857.31	6,055.48
132-0-311-045		10,464.70	5,836.52
132-0-311-055	2766 SEAGLASS WAY	7,089.99	3,954.32
132-0-311-105	400 TOWN CENTER DR	18,021.95	10,051.46
132-0-311-115	681 TOWN CENTER DR	2,004.93	1,118.22
132-0-311-125	691 TOWN CENTER DR	1,347.50	751.54
132-0-311-135	598 TOWN CENTER DR	2,554.30	1,424.62
132-0-311-165	TOWN CENTER DR	1,289.14	718.98
132-0-311-175	OXNARD BLVD	141,787.95	79,080.06
132-0-311-185	656 TOWN CENTER WAY	2,836.11	1,581.78
132-0-311-195	670 TOWN CENTER WAY	383.26	213.74
132-0-330-015	361 RIVERPARK BLVD	163.46	91.16
132-0-330-025	361 RIVERPARK BLVD	163.46	91.16
132-0-330-035	361 RIVERPARK BLVD	163.46	91.16
132-0-330-045	361 RIVERPARK BLVD	163.46	91.16

Slight variances may occur due to rounding

**City of Oxnard**  
**Oxnard Blvd/Highway 101 Interchange CFD 2000-3**  
**Final Billing Detail Report for Fiscal Year 2023/24**

APN	Site Address	Max Tax Rate	FY 23/24 Levy Total
132-0-330-055	361 RIVERPARK BLVD	163.46	91.16
132-0-330-065	361 RIVERPARK BLVD	163.46	91.16
132-0-330-075	361 RIVERPARK BLVD	163.46	91.16
132-0-330-085	361 RIVERPARK BLVD	163.46	91.16
132-0-330-095	361 RIVERPARK BLVD	163.46	91.16
132-0-330-105	361 RIVERPARK BLVD	163.46	91.16
132-0-330-115	361 RIVERPARK BLVD	163.46	91.16
132-0-330-125	361 RIVERPARK BLVD	163.46	91.16
132-0-340-015	359 RIVERPARK BLVD	163.46	91.16
132-0-340-025	359 RIVERPARK BLVD	163.46	91.16
132-0-340-035	359 RIVERPARK BLVD	163.46	91.16
132-0-340-045	359 RIVERPARK BLVD	163.46	91.16
132-0-340-055	359 RIVERPARK BLVD	163.46	91.16
132-0-340-065	359 RIVERPARK BLVD	163.46	91.16
132-0-340-075	359 RIVERPARK BLVD	163.46	91.16
132-0-340-085	359 RIVERPARK BLVD	163.46	91.16
132-0-340-095	359 RIVERPARK BLVD	163.46	91.16
132-0-340-105	359 RIVERPARK BLVD	163.46	91.16
132-0-340-115	359 RIVERPARK BLVD	163.46	91.16
132-0-340-125	359 RIVERPARK BLVD	163.46	91.16
132-0-350-015	357 RIVERPARK BLVD	163.46	91.16
132-0-350-025	357 RIVERPARK BLVD	163.46	91.16
132-0-350-035	357 RIVERPARK BLVD	163.46	91.16
132-0-350-045	357 RIVERPARK BLVD	163.46	91.16
132-0-350-055	357 RIVERPARK BLVD	163.46	91.16
132-0-350-065	357 RIVERPARK BLVD	163.46	91.16
132-0-350-075	357 RIVERPARK BLVD	163.46	91.16
132-0-350-085	357 RIVERPARK BLVD	163.46	91.16
132-0-350-095	357 RIVERPARK BLVD	163.46	91.16
132-0-350-105	357 RIVERPARK BLVD	163.46	91.16
132-0-350-115	357 RIVERPARK BLVD	163.46	91.16
132-0-350-125	357 RIVERPARK BLVD	163.46	91.16
132-0-360-015	355 RIVERPARK BLVD	163.46	91.16
132-0-360-025	355 RIVERPARK BLVD	163.46	91.16
132-0-360-035	355 RIVERPARK BLVD	163.46	91.16
132-0-360-045	355 RIVERPARK BLVD	163.46	91.16
132-0-360-055	355 RIVERPARK BLVD	163.46	91.16
132-0-360-065	355 RIVERPARK BLVD	163.46	91.16
132-0-360-075	355 RIVERPARK BLVD	163.46	91.16
132-0-360-085	355 RIVERPARK BLVD	163.46	91.16
132-0-360-095	355 RIVERPARK BLVD	163.46	91.16
132-0-360-105	355 RIVERPARK BLVD	163.46	91.16

Slight variances may occur due to rounding

**City of Oxnard**  
**Oxnard Blvd/Highway 101 Interchange CFD 2000-3**  
**Final Billing Detail Report for Fiscal Year 2023/24**

APN	Site Address	Max Tax Rate	FY 23/24 Levy Total
132-0-360-115	355 RIVERPARK BLVD	163.46	91.16
132-0-360-125	355 RIVERPARK BLVD	163.46	91.16
132-0-370-015	353 RIVERPARK BLVD	163.46	91.16
132-0-370-025	353 RIVERPARK BLVD	163.46	91.16
132-0-370-035	353 RIVERPARK BLVD	163.46	91.16
132-0-370-045	353 RIVERPARK BLVD	163.46	91.16
132-0-370-055	353 RIVERPARK BLVD	163.46	91.16
132-0-370-065	353 RIVERPARK BLVD	163.46	91.16
132-0-370-075	353 RIVERPARK BLVD	163.46	91.16
132-0-370-085	353 RIVERPARK BLVD	163.46	91.16
132-0-370-095	353 RIVERPARK BLVD	163.46	91.16
132-0-370-105	353 RIVERPARK BLVD	163.46	91.16
132-0-370-115	353 RIVERPARK BLVD	163.46	91.16
132-0-370-125	353 RIVERPARK BLVD	163.46	91.16
132-0-380-015	351 RIVERPARK BLVD	163.46	91.16
132-0-380-025	351 RIVERPARK BLVD	163.46	91.16
132-0-380-035	351 RIVERPARK BLVD	163.46	91.16
132-0-380-045	351 RIVERPARK BLVD	163.46	91.16
132-0-380-055	351 RIVERPARK BLVD	163.46	91.16
132-0-380-065	351 RIVERPARK BLVD	163.46	91.16
132-0-380-075	351 RIVERPARK BLVD	163.46	91.16
132-0-380-085	351 RIVERPARK BLVD	163.46	91.16
132-0-380-095	351 RIVERPARK BLVD	163.46	91.16
132-0-380-105	351 RIVERPARK BLVD	163.46	91.16
132-0-380-115	351 RIVERPARK BLVD	163.46	91.16
132-0-380-125	351 RIVERPARK BLVD	163.46	91.16
132-0-390-015	323 RIVERPARK BLVD	163.46	91.16
132-0-390-025	323 RIVERPARK BLVD	163.46	91.16
132-0-390-035	323 RIVERPARK BLVD	163.46	91.16
132-0-390-045	323 RIVERPARK BLVD	163.46	91.16
132-0-390-055	323 RIVERPARK BLVD	163.46	91.16
132-0-390-065	323 RIVERPARK BLVD	163.46	91.16
132-0-390-075	323 RIVERPARK BLVD	163.46	91.16
132-0-390-085	323 RIVERPARK BLVD	163.46	91.16
132-0-390-095	323 RIVERPARK BLVD	163.46	91.16
132-0-390-105	323 RIVERPARK BLVD	163.46	91.16
132-0-390-115	323 RIVERPARK BLVD	163.46	91.16
132-0-390-125	323 RIVERPARK BLVD	163.46	91.16
132-0-400-015	321 RIVERPARK BLVD	163.46	91.16
132-0-400-025	321 RIVERPARK BLVD	163.46	91.16
132-0-400-035	321 RIVERPARK BLVD	163.46	91.16
132-0-400-045	321 RIVERPARK BLVD	163.46	91.16

Slight variances may occur due to rounding



**City of Oxnard**  
**Oxnard Blvd/Highway 101 Interchange CFD 2000-3**  
**Final Billing Detail Report for Fiscal Year 2023/24**

APN	Site Address	Max Tax Rate	FY 23/24 Levy Total
132-0-400-055	321 RIVERPARK BLVD	163.46	91.16
132-0-400-065	321 RIVERPARK BLVD	163.46	91.16
132-0-400-075	321 RIVERPARK BLVD	163.46	91.16
132-0-400-085	321 RIVERPARK BLVD	163.46	91.16
132-0-400-095	321 RIVERPARK BLVD	163.46	91.16
132-0-400-105	321 RIVERPARK BLVD	163.46	91.16
132-0-400-115	321 RIVERPARK BLVD	163.46	91.16
132-0-400-125	321 RIVERPARK BLVD	163.46	91.16
132-0-410-015	319 RIVERPARK BLVD	163.46	91.16
132-0-410-025	319 RIVERPARK BLVD	163.46	91.16
132-0-410-035	319 RIVERPARK BLVD	163.46	91.16
132-0-410-045	319 RIVERPARK BLVD	163.46	91.16
132-0-410-055	319 RIVERPARK BLVD	163.46	91.16
132-0-410-065	319 RIVERPARK BLVD	163.46	91.16
132-0-410-075	319 RIVERPARK BLVD	163.46	91.16
132-0-410-085	319 RIVERPARK BLVD	163.46	91.16
132-0-410-095	319 RIVERPARK BLVD	163.46	91.16
132-0-410-105	319 RIVERPARK BLVD	163.46	91.16
132-0-410-115	319 RIVERPARK BLVD	163.46	91.16
132-0-410-125	319 RIVERPARK BLVD	163.46	91.16
132-0-420-015	2831 N VENTURA RD	1,111.61	619.98
132-0-420-025	2851 N VENTURA RD	833.70	464.98
132-0-420-075	2861 N VENTURA RD	208.43	116.24
132-0-420-085	2861 N VENTURA RD	208.43	116.24
132-0-420-095	2861 N VENTURA RD	208.43	116.24
132-0-420-105	2861 N VENTURA RD	208.43	116.24
132-0-420-115	2841 N VENTURA RD	833.70	464.98
132-0-430-015	317 RIVERPARK BLVD	163.46	91.16
132-0-430-025	317 RIVERPARK BLVD	163.46	91.16
132-0-430-035	317 RIVERPARK BLVD	163.46	91.16
132-0-430-045	317 RIVERPARK BLVD	163.46	91.16
132-0-430-055	317 RIVERPARK BLVD	163.46	91.16
132-0-430-065	317 RIVERPARK BLVD	163.46	91.16
132-0-430-075	317 RIVERPARK BLVD	163.46	91.16
132-0-430-085	317 RIVERPARK BLVD	163.46	91.16
132-0-430-095	317 RIVERPARK BLVD	163.46	91.16
132-0-430-105	317 RIVERPARK BLVD	163.46	91.16
132-0-430-115	317 RIVERPARK BLVD	163.46	91.16
132-0-430-125	317 RIVERPARK BLVD	163.46	91.16
132-0-440-015	315 RIVERPARK BLVD	163.46	91.16
132-0-440-025	315 RIVERPARK BLVD	163.46	91.16
132-0-440-035	315 RIVERPARK BLVD	163.46	91.16

Slight variances may occur due to rounding

**City of Oxnard**  
**Oxnard Blvd/Highway 101 Interchange CFD 2000-3**  
**Final Billing Detail Report for Fiscal Year 2023/24**

APN	Site Address	Max Tax Rate	FY 23/24 Levy Total
132-0-440-045	315 RIVERPARK BLVD	163.46	91.16
132-0-440-055	315 RIVERPARK BLVD	163.46	91.16
132-0-440-065	315 RIVERPARK BLVD	163.46	91.16
132-0-440-075	315 RIVERPARK BLVD	163.46	91.16
132-0-440-085	315 RIVERPARK BLVD	163.46	91.16
132-0-440-095	315 RIVERPARK BLVD	163.46	91.16
132-0-440-105	315 RIVERPARK BLVD	163.46	91.16
132-0-440-115	315 RIVERPARK BLVD	163.46	91.16
132-0-440-125	315 RIVERPARK BLVD	163.46	91.16
132-0-450-015	313 RIVERPARK BLVD	163.46	91.16
132-0-450-025	313 RIVERPARK BLVD	163.46	91.16
132-0-450-035	313 RIVERPARK BLVD	163.46	91.16
132-0-450-045	313 RIVERPARK BLVD	163.46	91.16
132-0-450-055	313 RIVERPARK BLVD	163.46	91.16
132-0-450-065	313 RIVERPARK BLVD	163.46	91.16
132-0-450-075	313 RIVERPARK BLVD	163.46	91.16
132-0-450-085	313 RIVERPARK BLVD	163.46	91.16
132-0-450-095	313 RIVERPARK BLVD	163.46	91.16
132-0-450-105	313 RIVERPARK BLVD	163.46	91.16
132-0-450-115	313 RIVERPARK BLVD	163.46	91.16
132-0-450-125	313 RIVERPARK BLVD	163.46	91.16
132-0-460-015	311 RIVERPARK BLVD	163.46	91.16
132-0-460-025	311 RIVERPARK BLVD	163.46	91.16
132-0-460-035	311 RIVERPARK BLVD	163.46	91.16
132-0-460-045	311 RIVERPARK BLVD	163.46	91.16
132-0-460-055	311 RIVERPARK BLVD	163.46	91.16
132-0-460-065	311 RIVERPARK BLVD	163.46	91.16
132-0-460-075	311 RIVERPARK BLVD	163.46	91.16
132-0-460-085	311 RIVERPARK BLVD	163.46	91.16
132-0-460-095	311 RIVERPARK BLVD	163.46	91.16
132-0-460-105	311 RIVERPARK BLVD	163.46	91.16
132-0-460-115	311 RIVERPARK BLVD	163.46	91.16
132-0-460-125	311 RIVERPARK BLVD	163.46	91.16
132-0-470-015	901 TOWN CENTER DR	3,447.36	1,922.70
132-0-470-025	901 TOWN CENTER DR	6,659.36	3,714.14
132-0-470-055	TOWN CENTER DR	2,751.26	1,534.46
132-0-470-075	TOWN CENTER DR	3,182.18	1,774.80
132-0-470-095	TOWN CENTER DR	563.51	314.28
132-0-470-105	TOWN CENTER DR	2,254.04	1,257.14
132-0-470-125	TOWN CENTER DR	6,828.42	3,808.44
132-0-470-135	TOWN CENTER DR	99.44	55.46
132-0-470-165		3,094.63	1,725.98

Slight variances may occur due to rounding

**City of Oxnard**  
**Oxnard Blvd/Highway 101 Interchange CFD 2000-3**  
**Final Billing Detail Report for Fiscal Year 2023/24**

APN	Site Address	Max Tax Rate	FY 23/24 Levy Total
132-0-470-175		3,360.84	1,874.44
132-0-470-185		2,994.81	1,670.30
132-0-470-195		3,394.12	1,893.00
132-0-470-235	TOWN CENTER DR	2,129.64	1,187.76
132-0-470-245	TOWN CENTER DR	2,262.74	1,262.00
139-0-050-140		551.79	307.74
139-0-050-225	2370 N H ST	275.90	153.86
142-0-010-215	101 W ESPLANADE DR	1,682.95	938.64
142-0-010-345	2420 N OXNARD BLVD	18,926.34	10,555.86
142-0-010-425	200 W ESPLANADE DR	3,338.32	1,861.88
142-0-010-515	271 W ESPLANADE DR	3,846.45	2,145.28
142-0-010-555	361 W ESPLANADE DR	7,115.94	3,968.80
142-0-010-575	ESPLANADE DR	5,256.82	2,931.90
142-0-010-605	ESPLANADE	1,499.02	836.04
142-0-010-615	401 W ESPLANADE DR	38,592.75	21,524.50
142-0-010-625	151 W ESPLANADE DR	59,684.11	33,287.88
142-0-010-635	411 ESPLANADE DR	20,252.58	11,295.56
142-0-010-645	421 W ESPLANADE DR	2,462.71	1,373.52
142-0-021-010	2420 N OXNARD BLVD	11,992.20	6,688.46
142-0-021-070	2360 N OXNARD BLVD	5,996.10	3,344.22
142-0-021-080	2368 N OXNARD BLVD	3,044.03	1,697.76
142-0-021-170	2341 VINEYARD AVE	8,488.35	4,734.24
142-0-021-240	2303 N VINEYARD AVE	4,313.15	2,405.58
142-0-021-265	2441 VINEYARD AVE	4,570.65	2,549.20
142-0-022-605	300 ESPLANADE DR	43,691.40	24,368.20
142-0-022-615	ESPLANADE	34,754.52	19,383.80
142-0-235-180	111 E GONZALES RD	9,393.54	5,239.10
142-0-235-190	137 E GONZALES RD	10,838.70	6,045.10
142-0-310-015	300 W ESPLANADE DR	6,027.64	3,361.82
142-0-310-025	250 W ESPLANADE DR	22,191.14	12,376.76
142-0-310-035	ESPLANADE DR	2,357.18	1,314.66
142-0-310-045	ESPLANADE DR	3,333.72	1,859.32
142-0-310-055	150 W ESPLANADE DR	9,967.49	5,559.20
142-0-310-065	VINEYARD AVE	2,794.94	1,558.82
<b>704 Accounts</b>		<b>\$921,278.22</b>	<b>\$513,820.06</b>
<b>704 Total Accounts</b>		<b>\$921,278.22</b>	<b>\$513,820.06</b>

Slight variances may occur due to rounding