



Walmart Sign Program  
Store No. 2032-02: Oxnard, CA  
April 17, 2009

U1489  
APPROVED  
BY: L. Windsor  
DATE: 4/22/09  
CITY OF OXNARD  
PLANNING



1000 Lakes Drive, Suite 405  
West Covina, CA 91790  
P. 626-917-6000  
F. 626-917-6008  
www.wp2dc.com

# TABLE OF CONTENTS

Project Directory	2
Purpose and Intent	3
General Provisions & Specifications	4
Construction Specifications & Miscellaneous Requirements	5
Walmart Site Plan	6
Walmart Elevations	7 - 10
Walmart Signage Detail	11
Walmart Installation Detail	12



## PROJECT DIRECTORY

Signage Architect:

WPIIDC, Inc.  
Contact: Virginia Tran  
1000 Lakes Drive, Suite 405  
West Covina, CA 91790  
Phone: 626.917.6800  
Fax: 626.917.6808

Civil Engineer:

Tait & Associates  
Contact: Brian Anderson, P.E.  
701 N. Parkcenter Drive  
Santa Ana, CA 92705  
Phone: 714.560.8200 x690  
Fax: 714.560.8211



1000 Lakes Drive, Suite 405  
West Covina, CA 91790  
P. 626.917.6800  
F. 626.917.6808  
www.wpiidc.com

## PURPOSE AND INTENT

To promote the quality of design desired for this Walmart, this Sign Program establishes criteria for the design, implementation and regulation of Walmart signage, as well as site or thematic graphics for the Walmart located in Oxnard, CA. Signage of high quality design and materials using appropriate colors is considered an integral part of the image and success of this Walmart.

Walmart may utilize any or all of the sign types described herein. All signage shall comply with applicable provisions of the Zoning Ordinance and land use plans of the City of Oxnard. All building and site signage shall be consistent with this Sign Program to provide a consistent and comprehensive design character.

The intent of this Sign Program is to ensure that signage for Walmart is designed and executed in a manner which will achieve the following objectives while providing desired project identification.

### Exterior Signing

The objectives of exterior signage are:

- To provide concise identity and information for shoppers and prospective shoppers while avoiding visual competition with the building's aesthetic or the site landscaping.
- To produce creative signage in good taste that will enhance Walmart image while complementing the architectural and landscape design theme.
- To provide functional signage to effectively serve the needs of consumers while providing proper identification of Walmart.
- To expedite the review and approval of Walmart signage by providing guidelines and criteria that explain acceptable standards for the signage.



## GENERAL PROVISIONS AND SPECIFICATIONS

No sign shall be installed without the approval of this Sign Program and issuance of sign permit by the City of Oxnard.

- Signs shall meet or exceed minimum industry standards for graphic quality and shall be designed to be compatible with and complementary to the surrounding building facades. Sign fabrication work shall meet or exceed minimum industry standards for quality.
- The sign copy, color, size and design shall be consistent with this Sign Program which shall be subject to approval by the City of Oxnard. Letter heights and logos, where specified, shall be determined by measuring the normal capital letter of a font exclusive of swashes, ascenders and descenders.
- Wall signs shall be affixed without visible means of attachment unless attachments make an intentional design statement and are an integral part of the design.
- Walmart's sign contractor shall repair any damage to the building caused by its work.





# CONSTRUCTION SPECIFICATIONS & MISCELLANEOUS REQUIREMENTS

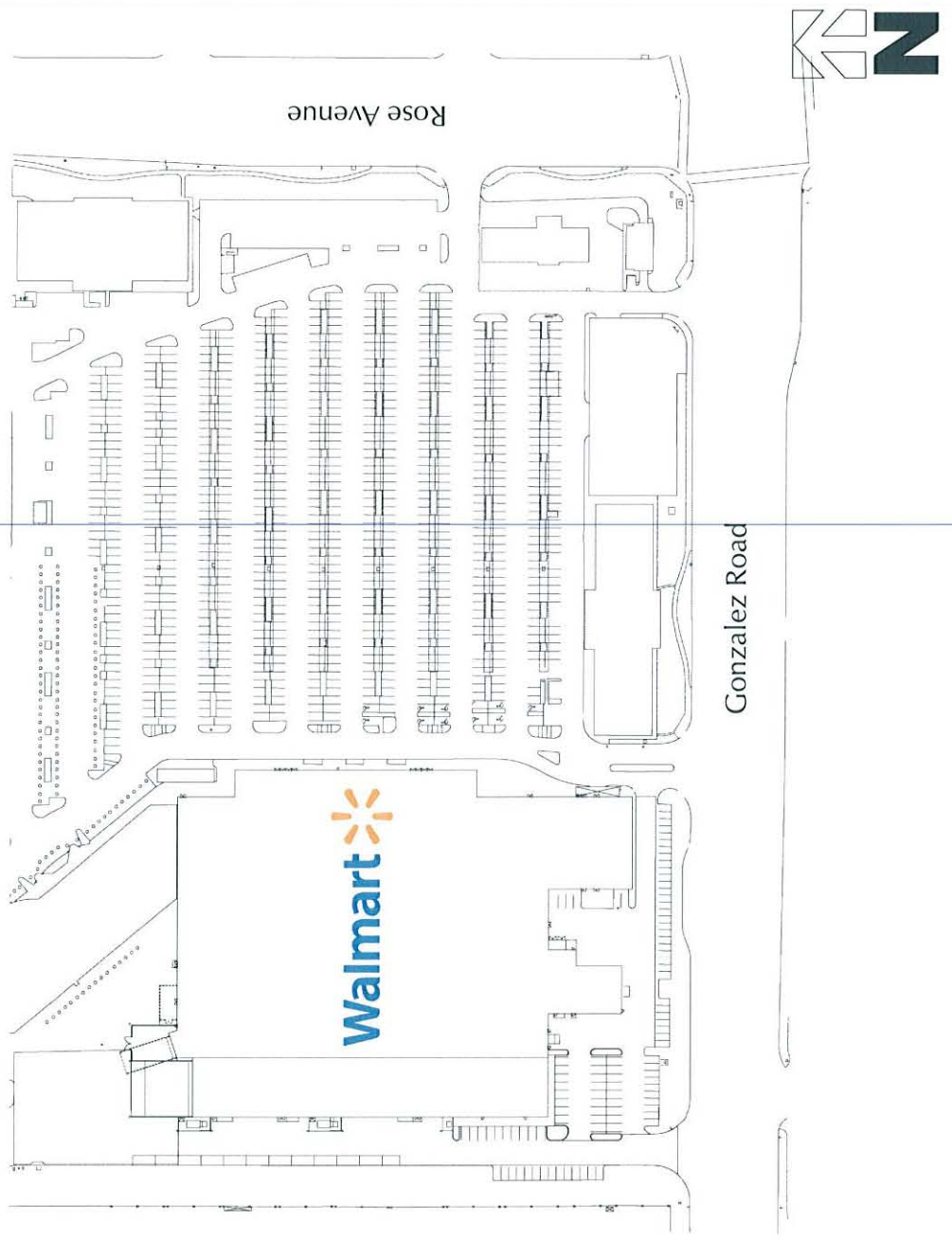
- All identification signs and secondary identification signs shall consist of face-illuminated individual dimensional letter forms and/or symbols (or an assembly of dimensional letter forms where Walmart logotype is script-style letters). All letter/symbol faces shall be translucent acrylic with integral color.
- The cabinet and/or channel letters shall be constructed of 0.060 - 0.090 aluminum, with 1/8" plastic face and fastened to the wall or fascia in an approved manner. All metal shall receive a minimum of two (2) coats of primer and two (2) coats of finish paint. Metal sheet seam joints shall be joined by pop rivets. Halo lighting, LED and/or neon need secondary ground fault consistent with UL2161. All letters shall have service access to lamps, ballasts and wiring.
- All fascia signs shall be centered left to right on the fascia or building frontage and generally centered top and bottom between fascia reveals. The vertical position will vary depending on the configuration of the sign and the locations of the reveals on the sign fascia.
- Power will be provided from the site and/or building electrical panel to a junction box at all sign locations. Power connection shall be Walmart responsibility. A time clock shall be provided by Walmart to turn off power to its wall signs. All electrical signs shall bear the Underwriters Laboratory "UL" symbol (not visible to the public view), and the installation of all electrical signs shall comply with applicable building and electrical codes. Walmart shall pay for electrical service for the signs. All conductors, transformers and other equipment shall be concealed.
- All penetrations of the building structure required for sign installation shall be neatly sealed in a watertight condition. All bolts, fastenings, clips, etc., shall be painted to match the adjacent building surface.
- All lettering shall be restricted to the "net sign area". No projection above or below the "net sign area" shall be permitted, except as otherwise approved in writing.
- Any hole or other building damage resulting from the removal of a sign shall be repaired and painted to match the building surface in the vicinity of the damage.
- Walmart shall maintain their signs in accordance with applicable City of Oxnard standards and shall replace defective lights and components in a timely manner.
- All sign installers shall comply with applicable State and local statutes, regulations and ordinances, and shall possess a current, valid City of Oxnard business license, and shall provide evidence of a current, valid Workman's Compensation Insurance policy.



1000 Lakes Drive, Suite 401  
 West Covina, CA 91790  
 P: 626-917-2000  
 E: 626-917-6000  
 www.wp2dc.com

D

SITE PLAN  
**Walmart**



1000 Lakes Drive, Suite 405  
 West Covina, CA 91790  
 P: 626.977.4888  
 www.mpzdc.com

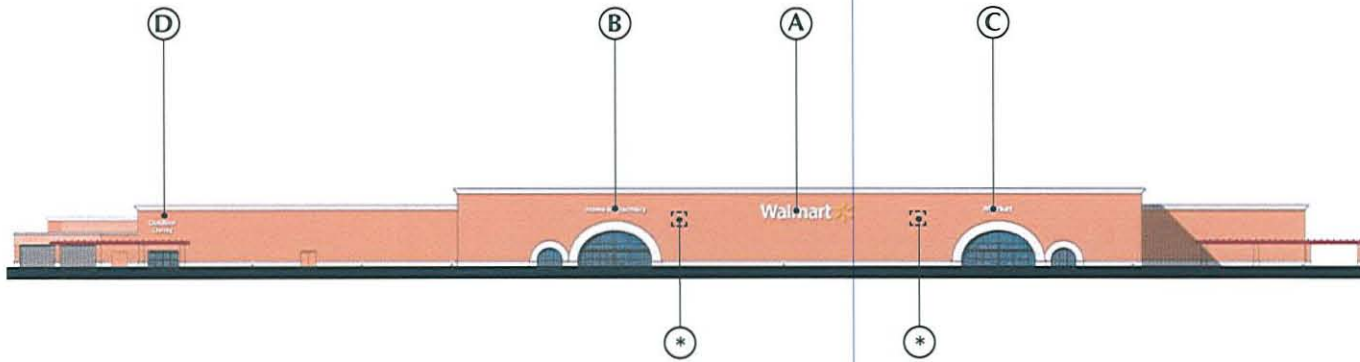
EAST ELEVATION  
**Walmart** 

**ILLUMINATED SIGN:**

Configuration: Channel letters with vacuum formed face (pan-formed) anchored to building surface (concrete block or plaster). Internally illuminated with LED.  
Face: Constructed with Sunguard Weatherable Polycarbonate  
Color: White (on sign face and return)  
Mounting: Anchor bolt/bracket - size to be submitted to jurisdiction for approval prior to installation. Minimum 3 anchors per sign.

**NON-ILLUMINATED SIGN:**

Configuration: Plexiglas formed letters stud mounted to building surface (concrete block or plaster).  
Face: Constructed with Sta-Tuf Plastic  
Color: White (on sign face and return)  
Mounting: Threaded stud - size to be submitted to jurisdiction for approval prior to installation. Minimum 3 studs per sign.



	SIGN	#	TYPE	DIMENSIONS	ILLUMINATION	SQ. FT.
A	Walmart & Spark	1	Business	8'-0" x 37'-3"	Channel lit	298.00
B	Home & Pharmacy	1	Directional	3'-5 7/16" x 28'-2 15/16"	N/A	97.53
C	Market	1	Directional	2'-8 1/8" x 10'-10 7/8"	N/A	29.18
D	Outdoor Living	1	Directional	6'-4 13/16" x 12'-9 13/16"	N/A	82.05

\*Potential future tenant signage location - not seeking approval in conjunction with this sign program.

**Sign Area Sub-Total: 506.76**  
**Total Building Signage Area: 548.82**



1000 Lakes Drive, Suite 405  
 West Covina, CA 91790  
 P: 626-917-6800  
 F: 626-917-6800  
 www.wp2dc.com

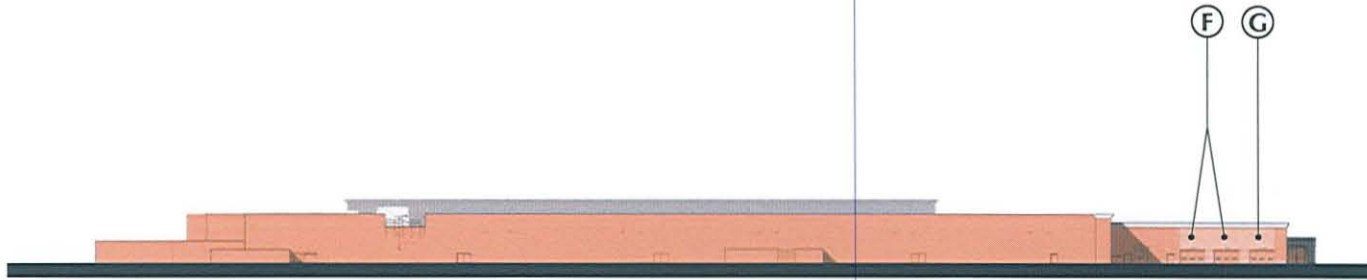


**ILLUMINATED SIGN:**

Configuration: Channel letters with vacuum formed face (pan-formed) anchored to building surface (concrete block or plaster). Internally illuminated with LED.  
Face: Constructed with SunGuard Weatherable Polycarbonate  
Color: White (on sign face and return)  
Mounting: Anchor bolt/bracket - size to be submitted to jurisdiction for approval prior to installation. Minimum 3 anchors per sign.

**NON-ILLUMINATED SIGN:**

Configuration: Plexiglas formed letters stud mounted to building surface.  
Face: Constructed with Sta-Tuf Plastic  
Color: White (on sign face and return)  
Mounting: Threaded stud - size to be submitted to jurisdiction for approval prior to installation. Minimum 3 studs per sign.



	SIGN	#	TYPE	DIMENSIONS	ILLUMINATION	SQ. FT.
F	Tire	2	Additional	1'-0" x 2'-3 3/8"	N/A	4.56
G	Lube	1	Additional	1'-0" x 2'-11"	N/A	2.92

\*Potential future tenant signage location - not seeking approval in conjunction with this sign program.

<b>Sign Area Sub-Total:</b>	<b>7.48</b>
<b>Total Building Signage Area:</b>	<b>548.82</b>



1800 Lakes Drive, Suite 405  
 West Covina, CA 91790  
 P: 626.917.6000  
 F: 626.917.6000  
 www.wp2dc.com

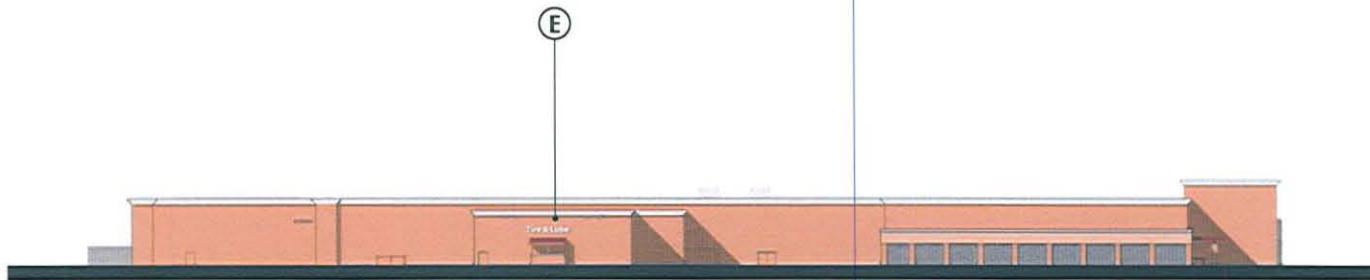
SOUTH ELEVATION  
**Walmart** 

**ILLUMINATED SIGN:**

Configuration: Channel letters with vacuum formed face (pan-formed) anchored to building surface (concrete block or plaster). Internally illuminated with LED.  
Face: Constructed with Sunguard Weatherable Polycarbonate  
Color: White (on sign face and return)  
Mounting: Anchor bolt/bracket - size to be submitted to jurisdiction for approval prior to installation. Minimum 3 anchors per sign.

**NON-ILLUMINATED SIGN:**

Configuration: Plexiglas formed letters stud mounted to building surface.  
Face: Constructed with Sta-Tuf Plastic  
Color: White (on sign face and return)  
Mounting: Threaded stud - size to be submitted to jurisdiction for approval prior to installation. Minimum 3 studs per sign.



SIGN	#	TYPE	DIMENSIONS	ILLUMINATION	SQ. FT.
E	1	Additional	2'-0" x 13'-6 5/8"	N/A	27.10

\*Potential future tenant signage location - not seeking approval in conjunction with this sign program.

<b>Sign Area Sub-Total:</b>	<b>27.10</b>
<b>Total Building Signage Area:</b>	<b>548.82</b>



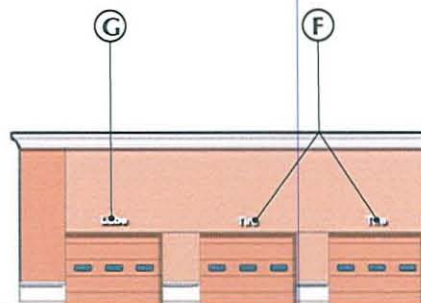
1000 Lakes Drive, Suite 405  
 West Covina, CA 91790  
 P: 626.917.6000  
 F: 626.917.6000  
 www.wp2dc.com

**ILLUMINATED SIGN:**

Configuration: Channel letters with vacuum formed face (pan-formed) anchored to building surface (concrete block or plaster). Internally illuminated with LED.  
Face: Constructed with Sunguard Weatherable Polycarbonate  
Color: White (on sign face and return)  
Mounting: Anchor bolt/bracket - size to be submitted to jurisdiction for approval prior to installation. Minimum 3 anchors per sign.

**NON-ILLUMINATED SIGN:**

Configuration: Plexiglas formed letters stud mounted to building surface.  
Face: Constructed with Sta-Tuf Plastic  
Color: White (on sign face and return)  
Mounting: Threaded stud - size to be submitted to jurisdiction for approval prior to installation. Minimum 3 studs per sign.



	SIGN	#	TYPE	DIMENSIONS	ILLUMINATION	SQ. FT.
F	Tire	2	Additional	1'-0" x 2'-3 3/8"	N/A	4.56
G	Lube	1	Additional	1'-0" x 2'-11"	N/A	2.92

\*Potential future tenant signage location - not seeking approval in conjunction with this sign program.

<b>Sign Area Sub-Total:</b>	<b>7.48</b>
<b>Total Building Signage Area:</b>	<b>548.82</b>



1000 Lakes Drive, Suite 405  
 West Covina, CA 91790  
 P 626.917.6000  
 F 626.917.6000  
 www.wp2dc.com



SIGNAGE DETAILS



Sign A



Sign B



Sign C



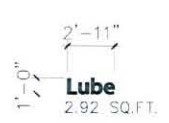
Sign D



Sign E



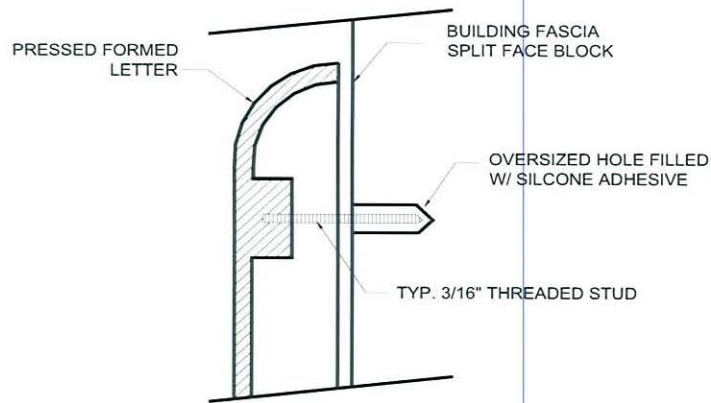
Sign F



Sign G

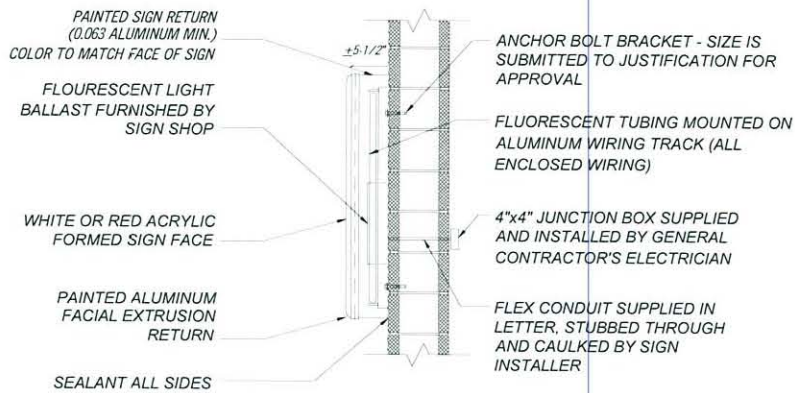


Non-Illuminated Signage Detail



NTS

Illuminated Signage Detail



NTS

NOTE: Walmart reserves the right to replace fluorescent tubing with LED.

© Copyright 2009, WPIIDC, Inc. This document, drawing and the design shown are the property of WPIIDC, Inc. Any reproduction, copying or other use of this drawing without the express prior written consent of WPIIDC, Inc. is strictly prohibited and any violation thereof shall be subject to legal action.

INSTALLATION  
DETAILS



1000 lakes drive, suite 405  
west covina, ca 91790  
p: 626.917.6800  
f: 626.917.6808  
www.wpiidc.com