

Paseo Azteca

618 South A Street, Oxnard, CA 93030

Master Sign Program



February 24, 2007

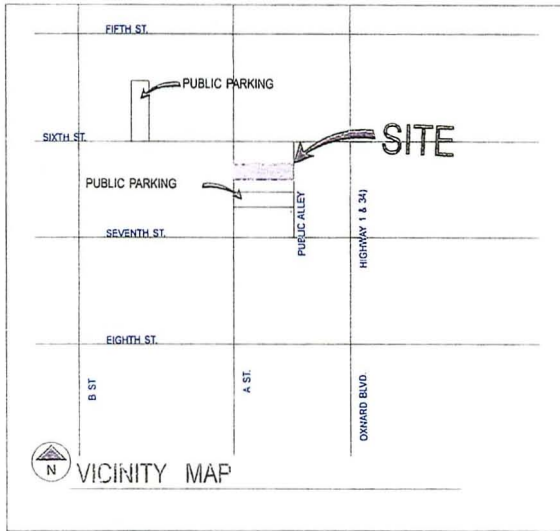
The Purpose of this sign criteria is to establish standards that assure tenant signage is harmonious, integrates with the architecture and provides coordinated proportional exposure for all tenants.

The Tenant shall submit two copies of the proposed sign design to the landlord and/or it's agent for review. Upon receiving landlord's stamped approval, the tenant shall then submit three copies to the City of Oxnard. Drawings shall include scaled elevations of proposed sign at tenant location with dimensions of tenant frontage and length of architectural surface on which the sign is installed. Additionally, a detailed, fully dimensioned, shop drawing showing colors, materials and method of attachment as required by The City of Oxnard shall be included with the submittal.

Upon receipt of permits, tenant shall forward copies to the landlord prior to installation of signs. All costs associated with the procurement, fabrication, and installation of signage is the sole responsibility of the tenant. Finally, any sign contractor working at Paseo Azteca, must be fully licensed, bonded, and have liability insurance with the landlord named as additional insured. Proof of aforementioned shall be forwarded to the landlord before commencement of any work on the premises.

Paseo Azteca Site Plan:

BY: *[Signature]*
 DATE: 4/19/02
 APPROVED
 CITY OF OXNARD
 PLANNING



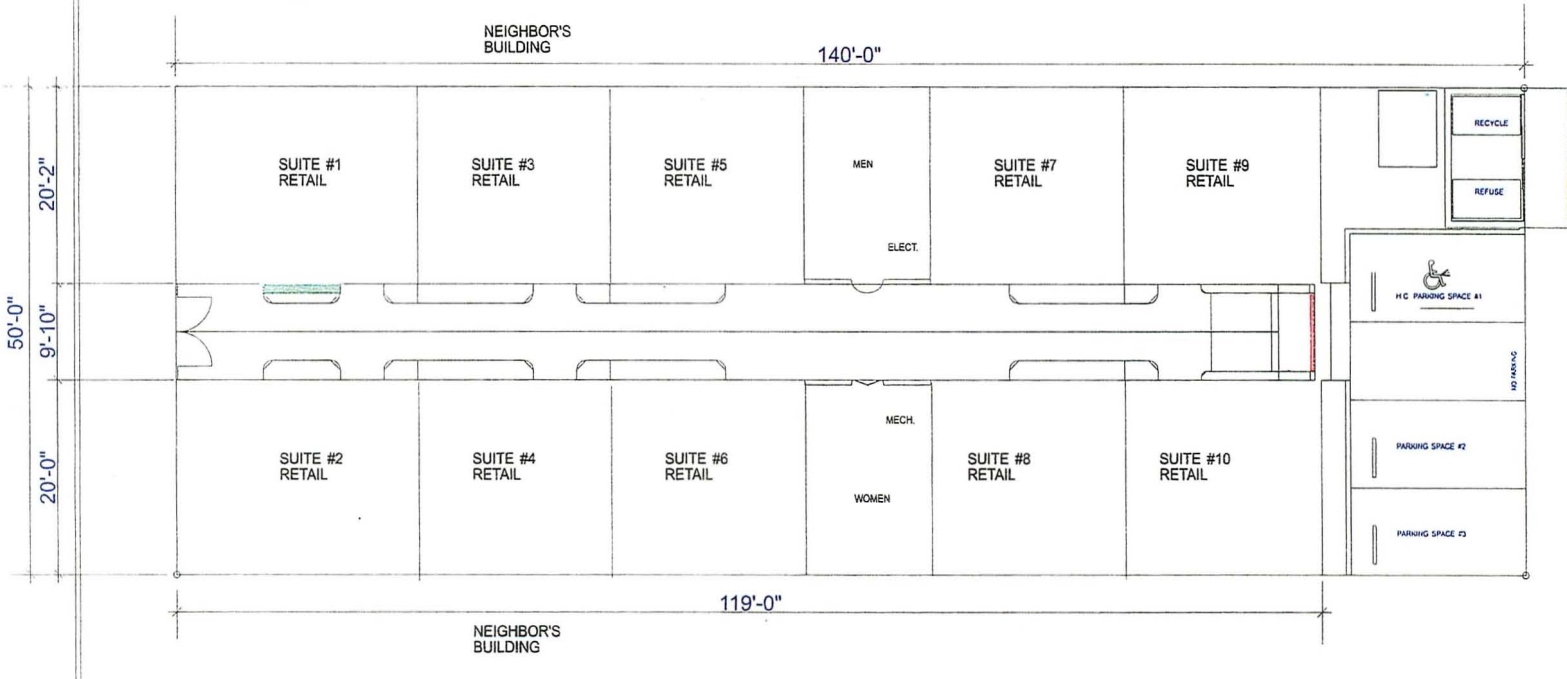
Total Sign Square Footage
 West Elevation 50' = 125 sqft.
 East Elevation 50' = 100 sqft.
 Interior Elevations
 20' x 10 units = 100 sqft.
Total Allowable SQFT. = 225 sqft.
 Total Used SQFT. = 76.5 sqft.



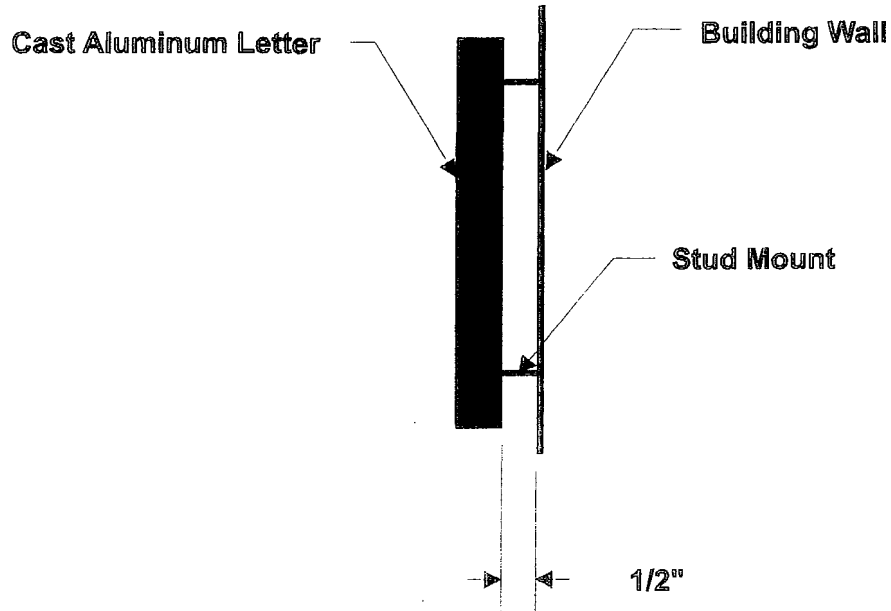
TRUE

SITE PLAN

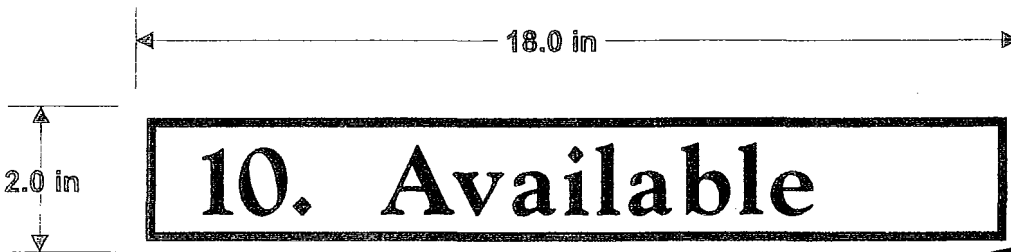
A STREET



All signs on exterior elevations shall consist of individual cast aluminum letters, stud mounted to the wall, offset 1/2" and painted black. Font is to be goudy extra bold

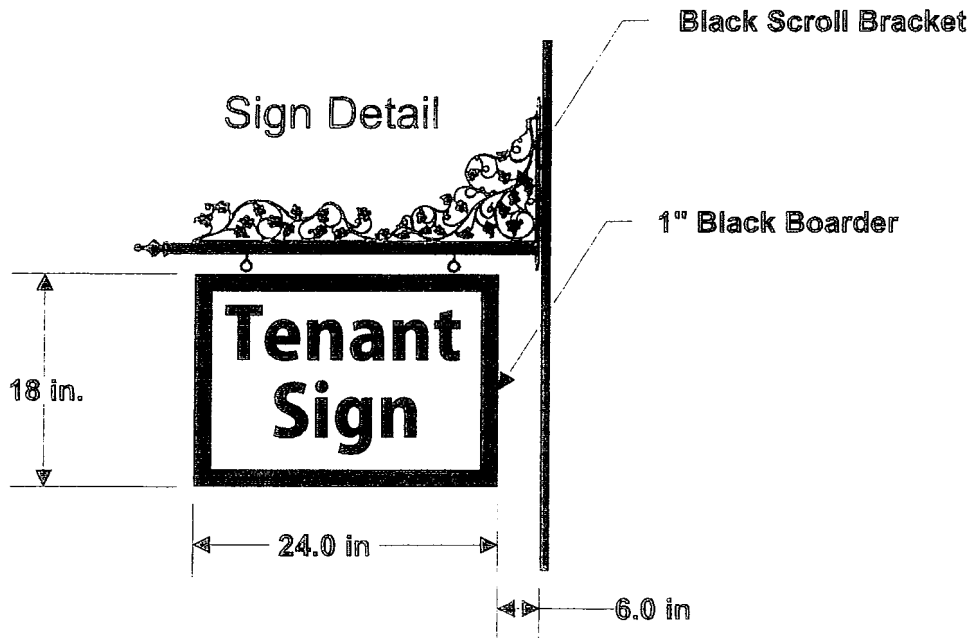


Directory signs will be constructed of sandblasted tile. Tile is to be American Olean Brand, Sonesta line, light taupe color, and reliefs will be painted black. Font is to be goudy extra bold

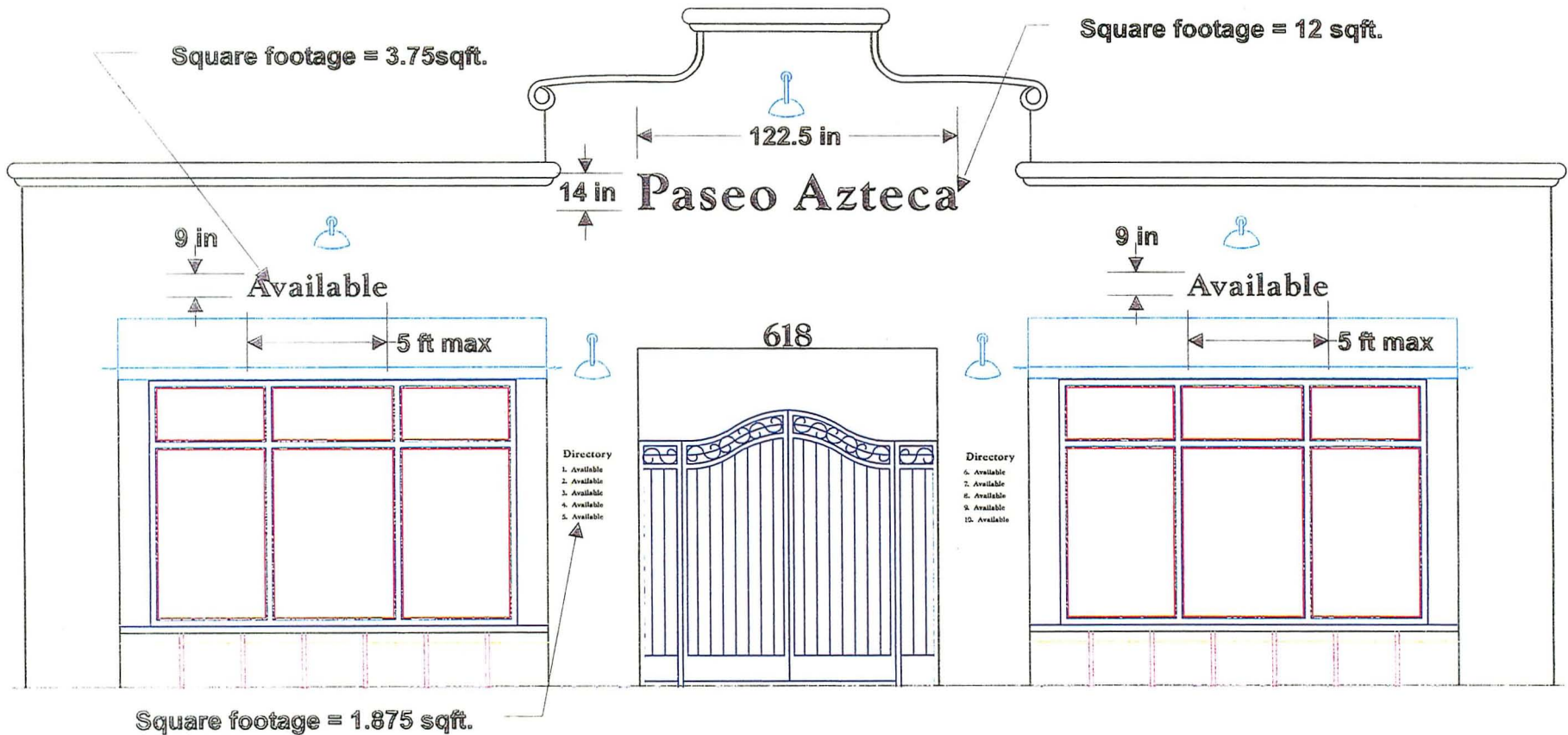


APPROVED
BY: *[Signature]*
DATE: 4-19-07
CITY OF OXNARD

All suite signs shall consist of blade signs as shown. Signs are to be 18" x 24" with a 1" black boarder. Scroll brackets are to be black in color, "Designer Scroll Bracket-Ivy" style supplied by Metal Craft Industries.



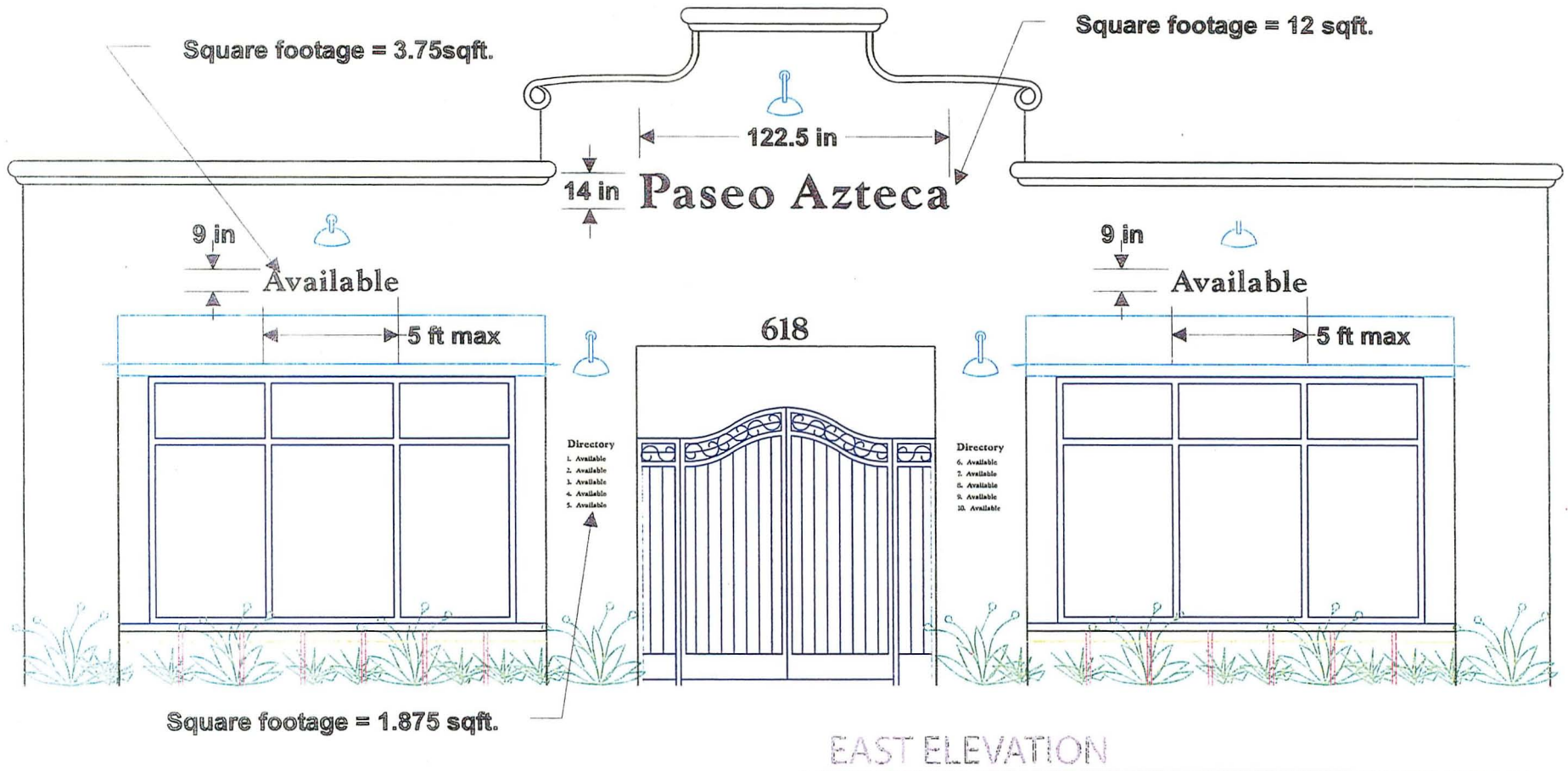
APPROVED
BY: *[Signature]*
DATE: *4/19/17*
CITY OF OXNARD
PLANNING



WEST ELEVATION

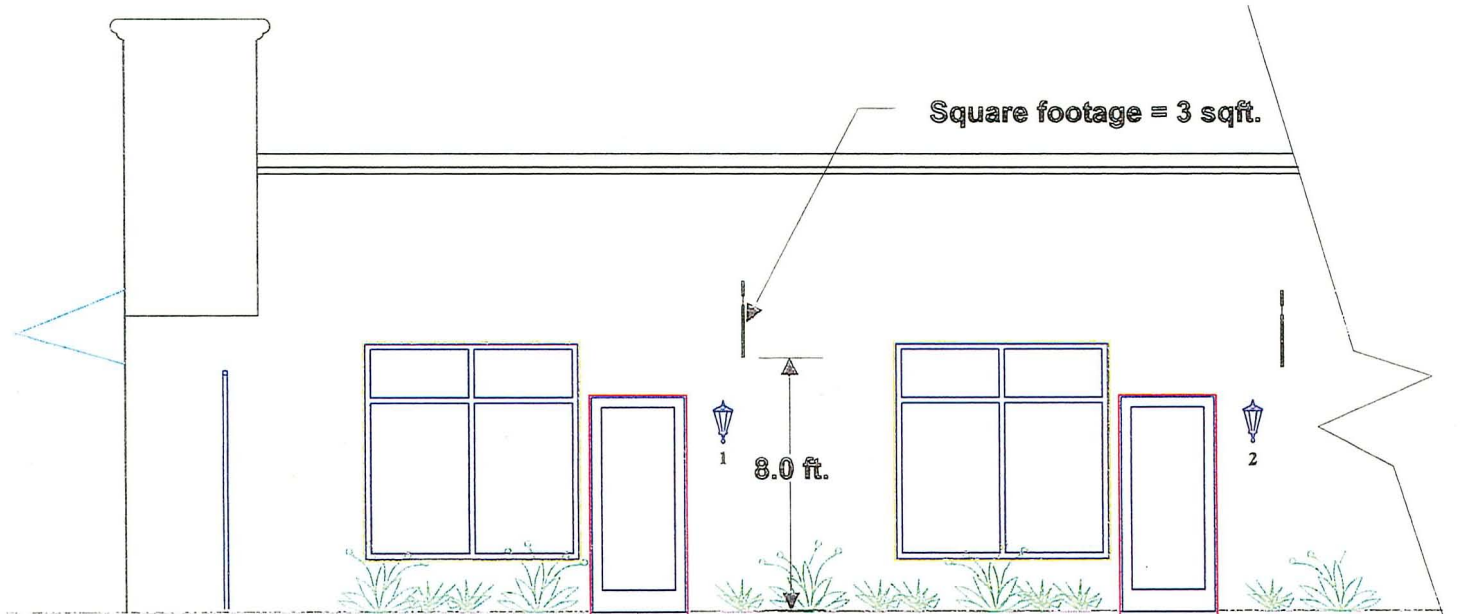
Total Sign Sq footage for this elevation = 23.25 sqft.

APPROVED
 BY: *Wade Davis*
 DATE: *4/19/07*
 CITY OF OXNARD
 PLANNING



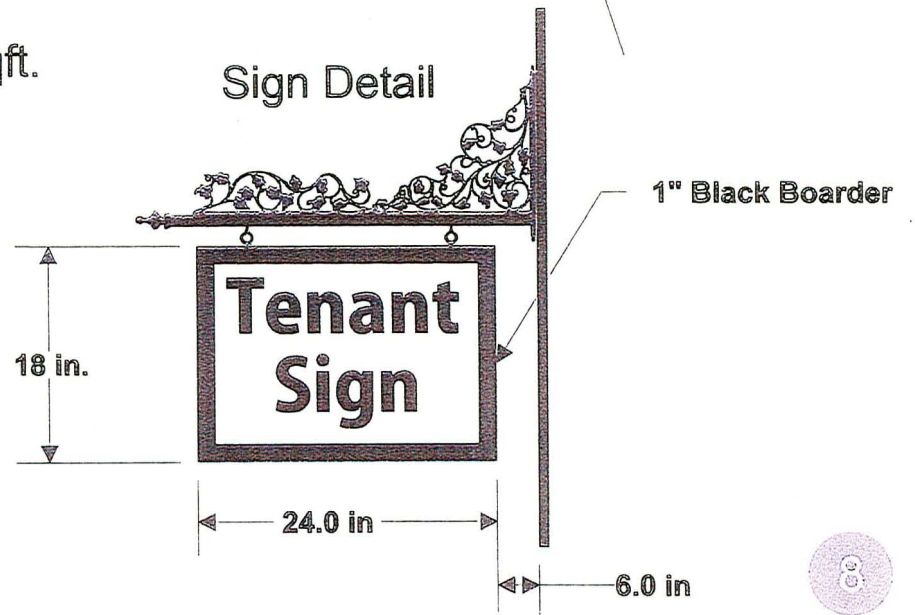
Total Sign Sq footage for this elevation = 23.25 sqft.

Typical Interior Elevation:



Total interior signage square footage = 30 sqft.

Sign Detail



APPROVED
BY *[Signature]*
DATE: 4/19/07
CITY OF OXNARD
PLANNING