

DATE: 11.11.05

REVISION NO.: 14

DESIGNER: JR

SCALE: N/A

DESIGN NO : 05 1223

REVISED DATES: 09.13.12

3.5.18

4.19.18

# SEABRIDGE

MARKETPLACE

MASTER SIGN PROGRAM

OXNARD, CA

**CENSOURCE**

The Central Source for Signage, Graphics & Services

# ANCHOR & INLINE TENANTS WALL SIGNS ANCHOR TENANT (48,000+ SF)

DATE: 11.11.05

REVISION NO.: 14

DESIGNER: JR

SCALE: N/A

DESIGN NO : 05 1223

REVISED DATE: 09.13.12

**SIGN TYPE:** Fabricated individual letters. Internally illuminated acrylic or opaque face with halo lighting. Cabinet types limited to logos only.

**LOCATION:** Pinned off fascia of store building. Grade to top of letters is maximum 28" unless architectural conditions necessitate placing letters higher. Minimum distance to edge of building is 36"

**MAXIMUM SIGN AREA:** 234 square feet.

**QUANTITY ALLOWED:** Quantity based on maximum square feet of sign area, but not to exceed a total of five(5) signs.

**MAXIMUM LETTER HEIGHT:** 60" (Primary sign only)

**MAXIMUM SIGN HEIGHT:** 72" (Primary sign only)

**MOUNTING METHOD:** Pin mounted off fascia

**LETTER STYLE:** To be determined by Tenant, subject to Landlord approval.

**COLORS & MATERIAL:** To be determined by Tenant, subject to Landlord approval and governmental agencies.

## SHOPS 'A' & 'B' TENANTS AND SATELLITE PAD

**SIGN TYPE:** Fabricated individual letters with opaque faces and internal halo lighting; exposed neon (on rheostat); routed metal or stone with concealed light source; fabricated letters with internally illuminated faces; fabricated individual letters with translucent colored acrylic faces and painted metal sides; or open pan channel with exposed neon; fabricated non-illuminated dimensional signs; Signage types not allowed are cabinet or box signs. (Cabinets/boxes limited to logos only.) Types of illumination: Internal, external, non-illuminated, neon, LED, or exposed lighting.

**LOCATION:** Building fascia. Minimum distance to edge of building is 36"

**MAXIMUM SIGN AREA:** In general, One (1) square foot of signage per one (1) linear foot of building frontage: Maximum 37 square feet allowed. (Whichever is less)

Sign length cannot exceed 70% of fascia. \*NOTE: See below for "stacked" sign copy/logo area calculation.

**End Cap Tenants (with a second and/or third elevation):** 1 square foot of signage per one (1) linear foot of building frontage facing a pedestrian arcade/mall. Sign length cannot exceed 70% of fascia

**QUANTITY ALLOWED:** Medium Tenants: One(1) per elevation; maximum Two(2) per Tenant.

**End Cap Tenants:** One(1) per elevation; maximum Three(3) per Tenant.

**MAXIMUM LETTER HEIGHT:** 24" Maximum when at or above 18'-0" from grade. (Minimum 22" letter height required. Except in the case the sign length exceeds 70% of the fascia. In which case, the letter height can be reduced as needed)

18" Maximum when at or below 10'-0" but not above 18'-0" from grade. (Minimum 16" letter height required. Except in the case the sign length exceeds 70% of the fascia. In which case, the letter height can be reduced as needed)

**MOUNTING METHOD:** Surface mounted on building fascia with 1/2" spacers behind letters. Letters may also be mounted on back-tilt aluminum backer panel (see diagram) subject to Landlord approval.

**LETTER STYLE:** To be determined by Tenant, subject to Landlord approval.

**COLORS & MATERIAL:** To be determined by Tenant, subject to Landlord approval and governmental agencies.

**NOTE: Tenants cannot combine square feet from other elevations onto one(1) elevation.**

**Sign area (square feet) is calculated per elevation and includes backer panel where applicable.**

# CENSOURCE

The Central Source for Signage, Graphics & Services

# ANCHOR & INLINE TENANTS WALL SIGNS

# ANCHOR TENANT WALL SIGNS

**NOTE: ALL MEASUREMENTS MUST BE VERIFIED UPON COMPLETION OF CONSTRUCTION  
FIELD SURVEYS REQUIRED TO VERIFY ALL DIMENSIONS**

DATE: 11.11.05

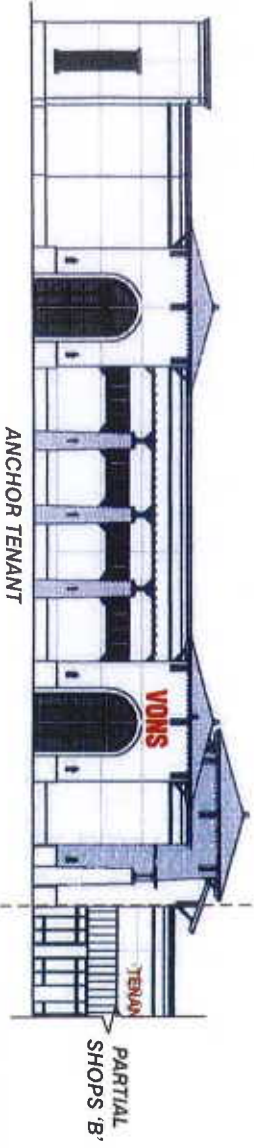
REVISION NO.: 14

DESIGNER: JR

SCALE: N/A

DESIGN NO: 05 1223

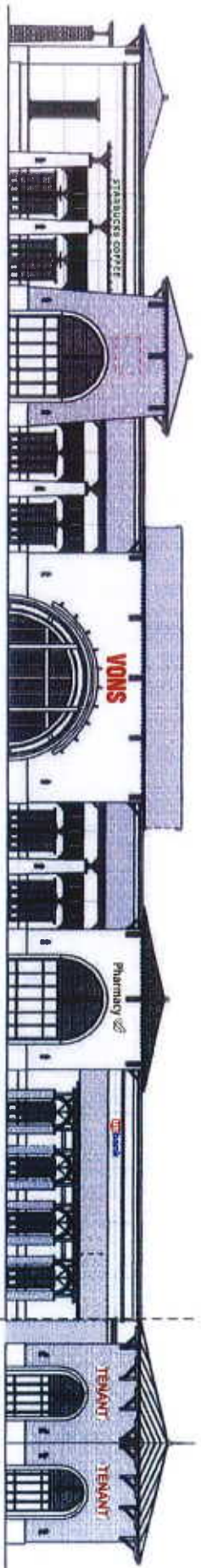
REVISED DATE: 09.13.12



EAST ELEVATIONS

ANCHOR TENANT

SCALE: NOT TO SCALE



NORTH ELEVATIONS

ANCHOR TENANT

SCALE: NOT TO SCALE

SHOPS 'B'

**CENSource**

The Central Source for Signage, Graphics & Services

**ANCHOR TENANT WALL SIGNS**

# ADDITIONAL TOWER TENANT WALL SIGNS

DATE: 11.11.05

REVISION NO.: 14

DESIGNER: JR

SCALE: N/A

DESIGN NO.: 05 1223

REVISED DATE: 09.13.12

## TOWER (IF APPLICABLE)

SIGN TYPE: Fabricated logo symbol or letters with opaque faces and concealed halo lighting or external light fixture.  
Type of illumination: Internally illuminated acrylic face or opaque face with halo lighting.

LOCATION: Tower face: grade to top of sign is maximum 28'-0"

MAXIMUM SIGN AREA: One (1.5) square foot of signage per one (1) lineal foot of building frontage: Not to exceed 15% of fascia.  
*Second and/or third elevation (if applicable): 1.5 square foot of signage per one (1) lineal foot of building frontage facing a pedestrian arcade/mall, but not to exceed 15% of fascia.*

QUANTITY ALLOWED: One (1) per Tenant per elevation; maximum three (3) per tower.

MAXIMUM LETTER HEIGHT: To be determined by sign area.

MOUNTING METHOD: Surface mounted on face of tower or perpendicular to tower on corner

LETTER STYLE: To be determined by Tenant, subject to Landlord approval.

COLORS & MATERIAL: To be determined by Tenant, subject to Landlord approval and governmental agencies.

NOTE: Tenants cannot combine square feet from other elevations onto one (1) elevation.  
Sign area (square feet) is calculated per elevation.



The Central Source for Signage, Graphics & Services

ADDITIONAL TOWER TENANT WALL SIGNS



# SHOPS "A" TENANT WALL SIGNS

\*\*NOTE: ALL MEASUREMENTS MUST BE VERIFIED UPON COMPLETION OF CONSTRUCTION  
FIELD SURVEYS REQUIRED TO VERIFY ALL DIMENSIONS

\*\* LETTERS IN WHITE ARE OPTIONAL PLACEMENTS FOR TENANT SIGN. (SEE PAGES E & E1 FOR REFERENCE)

DATE: 11.11.05

REVISION NO.: 14

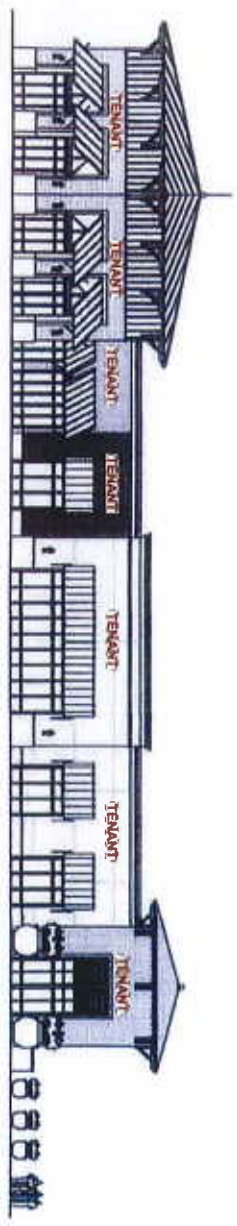
DESIGNER: JR

SCALE: N/A

DESIGN NO.: 05 1223

REVISED DATE: 09.13.12

## EAST ELEVATIONS



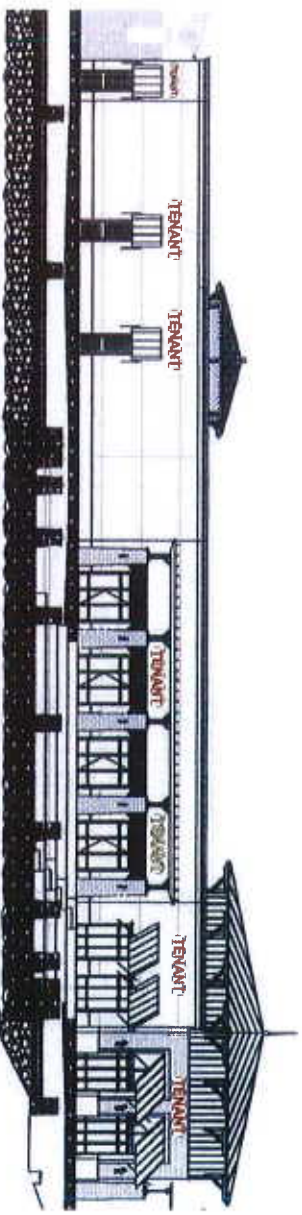
SCALE: NOT TO SCALE

## NORTH ELEVATIONS



SCALE: NOT TO SCALE

## SOUTH ELEVATIONS



SCALE: NOT TO SCALE



The Central Source for Signage, Graphics & Services

# SHOPS "A" TENANT WALL SIGNS

# SHOPS "B" TENANT WALL SIGNS

\*\*NOTE: ALL MEASUREMENTS MUST BE VERIFIED UPON COMPLETION OF CONSTRUCTION  
FIELD SURVEYS REQUIRED TO VERIFY ALL DIMENSIONS

\*\*LETTERS IN WHITE ARE OPTIONAL PLACEMENTS FOR TENANT SIGN. (SEE PAGES F & F1 FOR REFERENCE)

DATE: 11.11.05

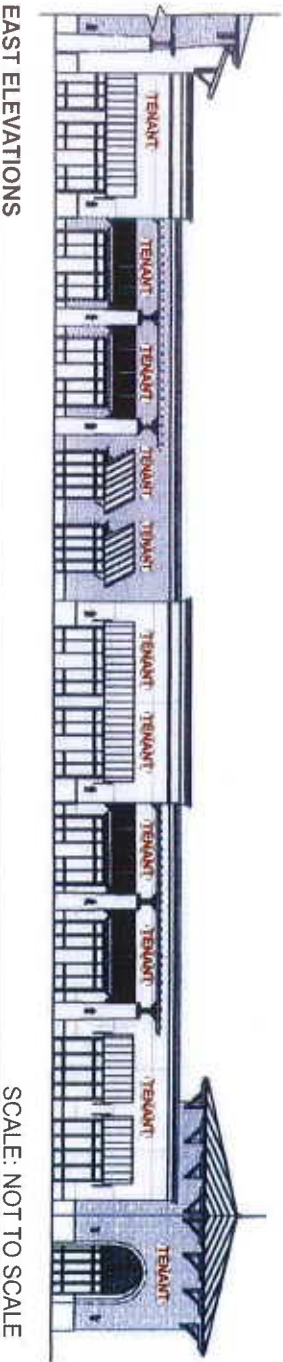
REVISION NO.: 14

DESIGNER: JR

SCALE: N/A

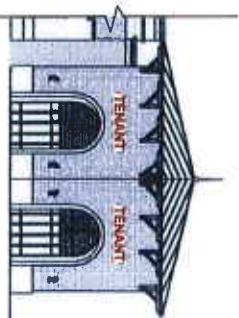
DESIGN NO.: 05 1223

REVISED DATE: 09.13.12



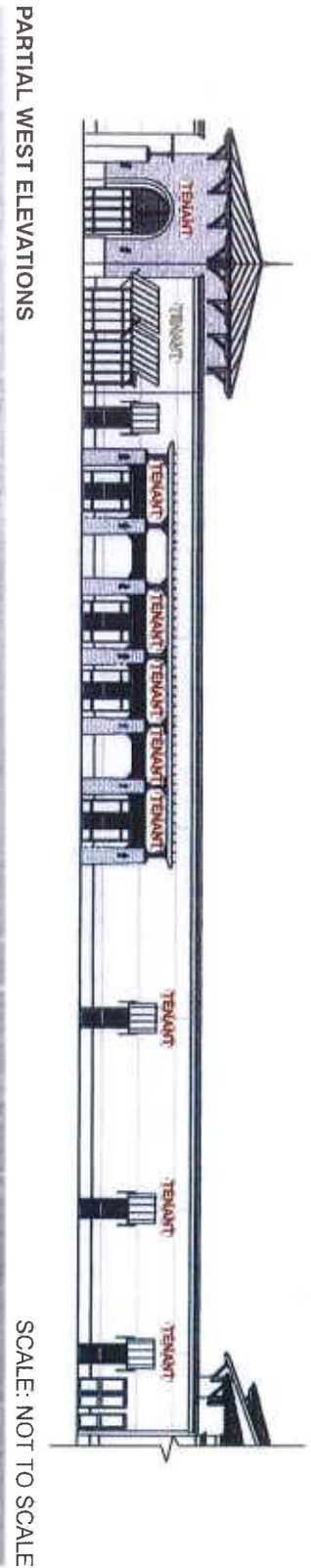
EAST ELEVATIONS

SCALE: NOT TO SCALE



PARTIAL NORTH ELEVATION

TOWER



PARTIAL WEST ELEVATIONS

SCALE: NOT TO SCALE

**CEN**SOURCE

The Central Source for Signage, Graphics & Services

SHOPS "B" TENANT WALL SIGNS

# CENTER MONUMENT SIGNS

SIGN TYPE: Aluminum construction with external illumination. Tenant panels to have routed-out push-through logos/copy. *Option for Internal Illumination: Routed-out panels can be internally illuminated.*

MAXIMUM SIGN AREA: 50 square feet.

MAXIMUM HEIGHT: 3'-6" high X 8'-0" long overall.

QUANTITY ALLOWED: One(1)

LETTER STYLE: Nationally recognized Corporation letter and logo style as approved by municipality and owner.

COLORS: Nationally recognized Corporation colors or colors as approved by municipality and owner.

COLOR & MATERIAL SCHEDULE:

FABRICATED ALUMINUM WITH SMOOTH FINISH  
 PAINTED WITH  
 ICI - 821 HONEYMOON  
 (SEE APPENDIX D)

FABRICATED ALUMINUM WITH TEXTURED FINISH (WELDED SEAMS)  
 PAINTED WITH  
 ICI - 937 SPRING BLOSSOM  
 (SEE APPENDIX D)

FABRICATED ALUMINUM CORNICE WITH TEXTURED FINISH (WELDED SEAMS)  
 PAINTED WITH  
 ICI-462 WESTERN TRAIL  
 (SEE APPENDIX D)

CULTURED LEDGESTONE ON BASE TO MATCH CULTURED STONE ON BUILDING FRONTAGE  
 (SEE APPENDIX D - 15 STONE)

DATE: 11.11.05

REVISION NO.: 14

DESIGNER: JR

SCALE: N/A

DESIGN NO : 05 1223

REVISED DATE: 09.13.12



3'-6" DOUBLE-FACE MONUMENT SIGN - TWO(2) REQUIRED

NOTE: THIS SIGN PROPOSED AS EXTERNALLY ILLUMINATED. (OPTION OF INTERNAL ILLUMINATION AS NOTED)

SCALE: 3/16" = 1'-0"

**MATERIALS:**

FABRICATED TEX-COATED ALUMINUM CONSTRUCTION  
 "SEABRIDGE" F.C.O. ALUMINUM LETTERS PAINTED TO MATCH BRONZE FINISH.

\*\*OPTION FOR INTERNAL ILLUMINATION!  
 TENANT PANELS TO BE ROUTE-OUT PUSH-THRU COPY  
 EXTERNAL ILLUMINATION BY FLUORESCENT LAMPS

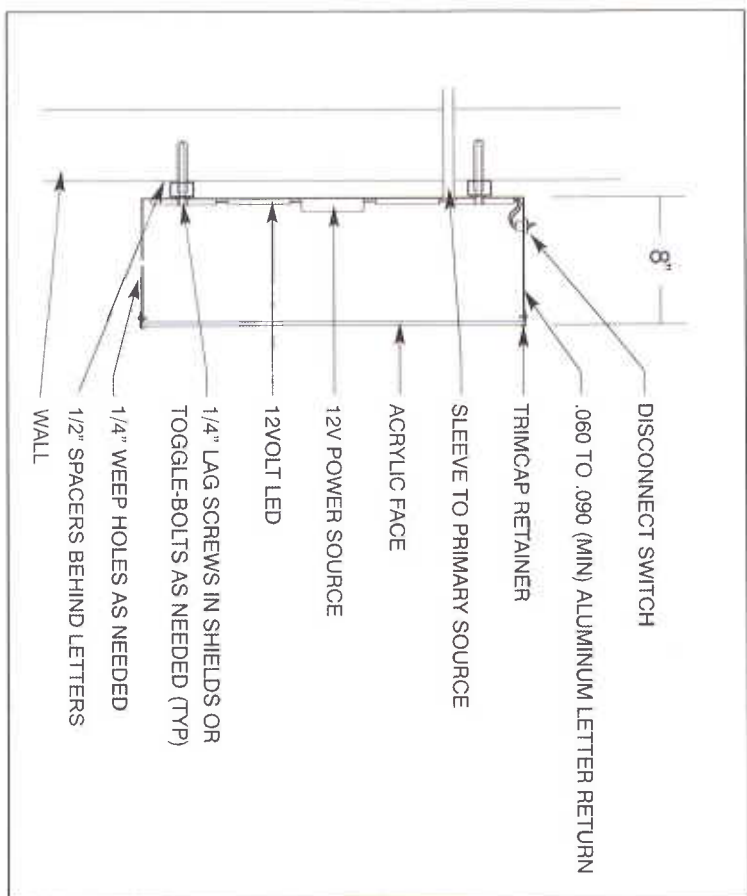


The Central Source for Signage, Graphics & Services

CENTER MONUMENT SIGNS



# TYPICAL ILLUMINATED LETTER & LOGO SECTIONS



TYPICAL 12 VOLT LETTER & LOGO SECTION

TYPE: DIRECT ILLUMINATION ILLUMINATION: LED

## SECTION EXAMPLES



DATE: 11.11.05

REVISION NO.: 14

DESIGNER: JR

SCALE: N/A

DESIGN NO : 05 1223

REVISED DATE: 09.13.12

09.13.12

3.5.18

# CEN SOURCE

The Central Source for Signage, Graphics & Services

# LETTER SECTIONS



# TYPICAL REMOTE ILLUMINATION LETTER & LOGO SECTIONS

DATE: 11.11.05

REVISION NO.: 14

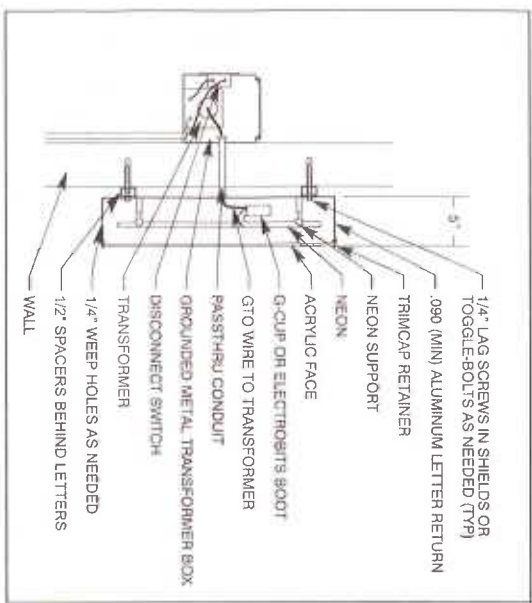
DESIGNER: JR

SCALE: N/A

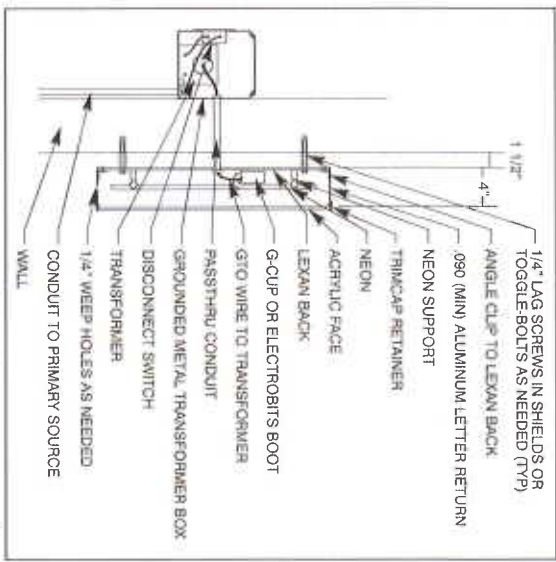
DESIGN NO.: 05 1223

REVISED DATE: 09.13.12

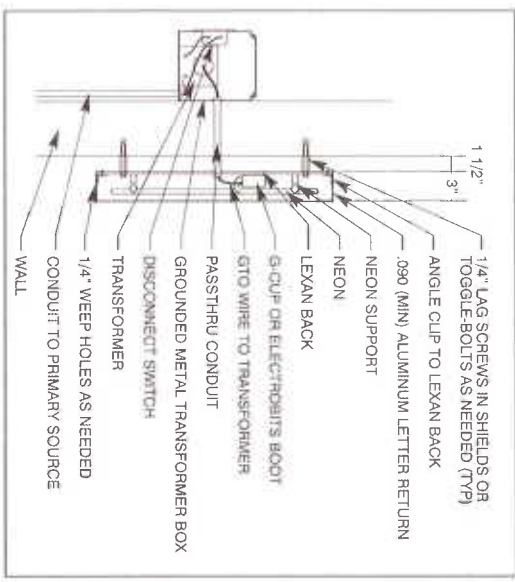
3.5:18



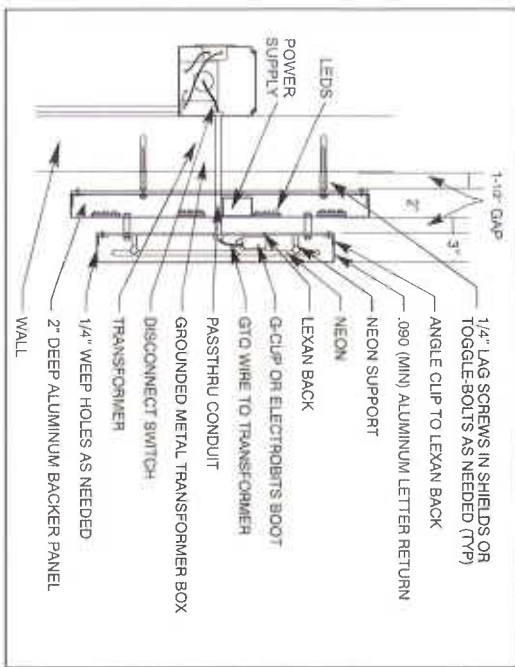
TYPICAL REMOTE TRANSFORMER LETTER & LOGO SECTION  
TYPE: DIRECT ILLUMINATION ILLUMINATION: NEON



TYPICAL REMOTE TRANSFORMER LETTER & LOGO SECTION  
TYPE: DIRECT / INDIRECT (HALO) ILLUMINATION ILLUMINATION: NEON



TYPICAL REMOTE TRANSFORMER LETTER & LOGO SECTION  
TYPE: INDIRECT (HALO) ILLUMINATION ILLUMINATION: NEON



OPTIONAL CHANNEL LETTERS MOUNTED TO 2\"/>

## SECTION EXAMPLES



# PROJECT SITE PLAN

DATE: 11.11.05

REVISION NO.: 14

DESIGNER: JR

SCALE: N/A

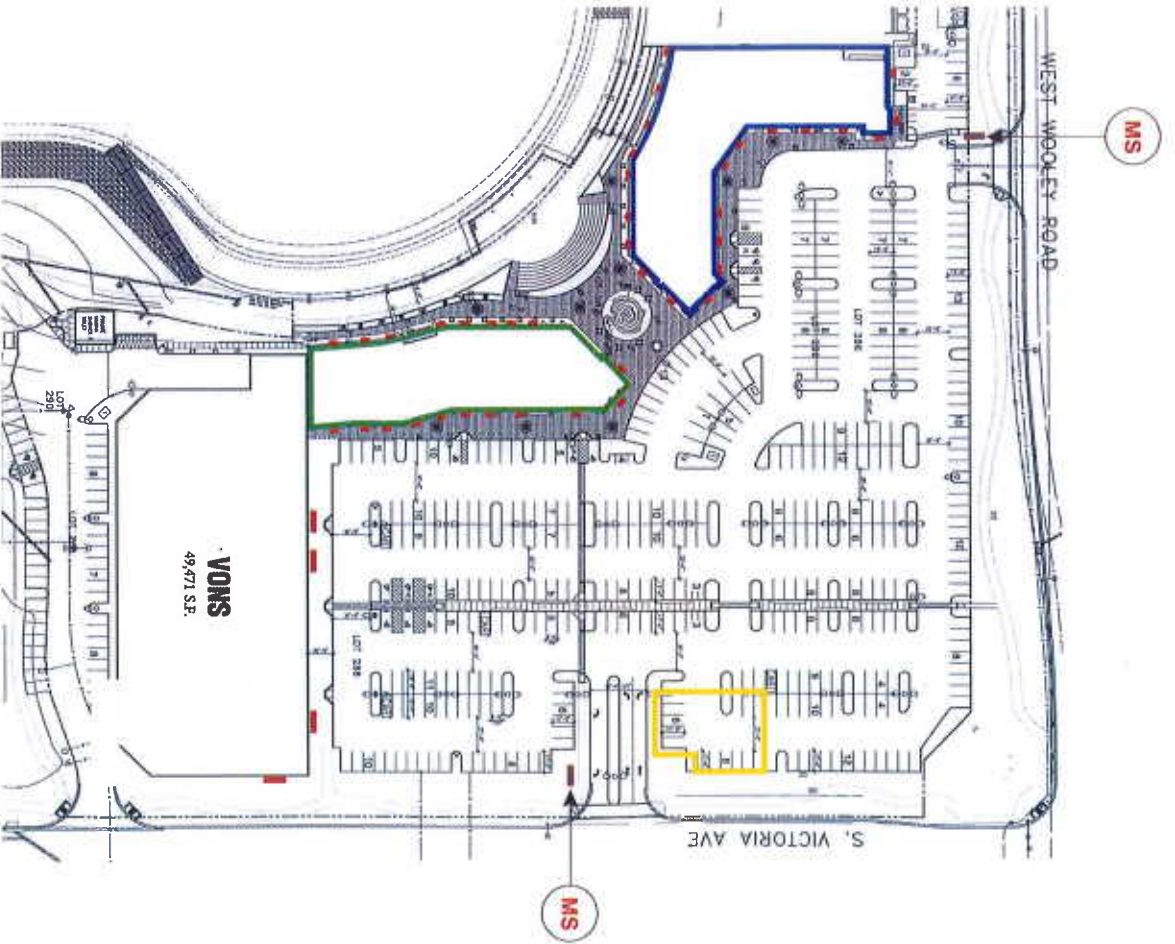
DESIGN NO.: 051223

REVISED DATE: 09.13.12

3.5:18

Item	Legend:
MONUMENT SIGNS	MS
WALL SIGNS	Red line
SHOPS "A"	Blue line
SHOPS "B"	Green line
SATELLITE PAD	Yellow line

**NOTE:**  
EXACT LOCATIONS OF MONUMENT SIGNS TO BE DETERMINED.



SITE PLAN

SCALE: N.T.S.

**CENSOURCE**

The Central Source for Signage, Graphics & Services

PROJECT SITE PLAN

# ANCHOR TENANT SIGNS LOCATIONS

DATE: 11.11.05

NOTE:  
EXACT LOCATIONS OF SIGNS TO BE DETERMINED ON FASCIA.

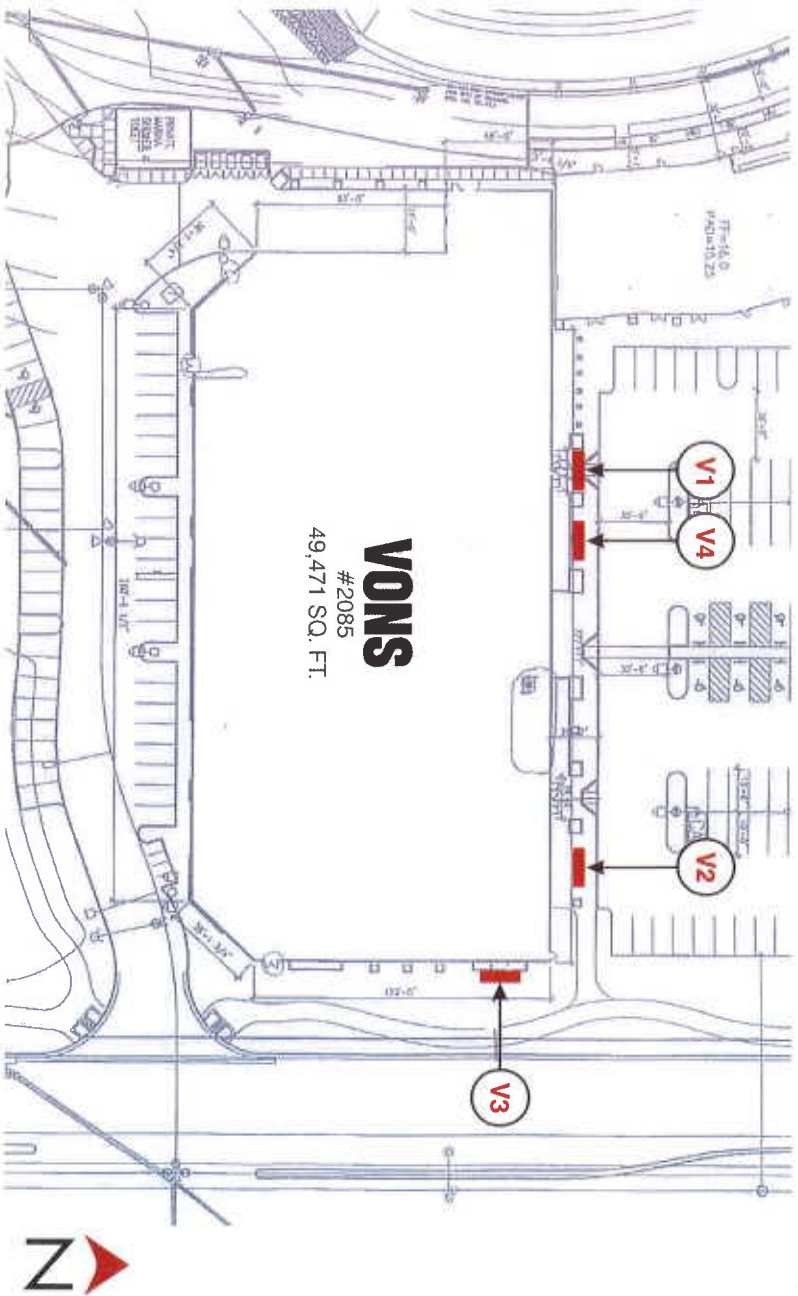
REVISION NO.: 14

DESIGNER: JR

SCALE: N/A

DESIGN NO.: 05 1223

REVISED DATE: 09.13.12



FLOOR PLAN

SCALE: N.T.S.



# SHOPS "A" TENANT SIGNS LOCATIONS

**NOTE:**  
EXACT LOCATIONS OF SIGNS TO BE DETERMINED AND AS APPROVED BY LANDLORD.

DATE: 11.11.05

REVISION NO.: 14

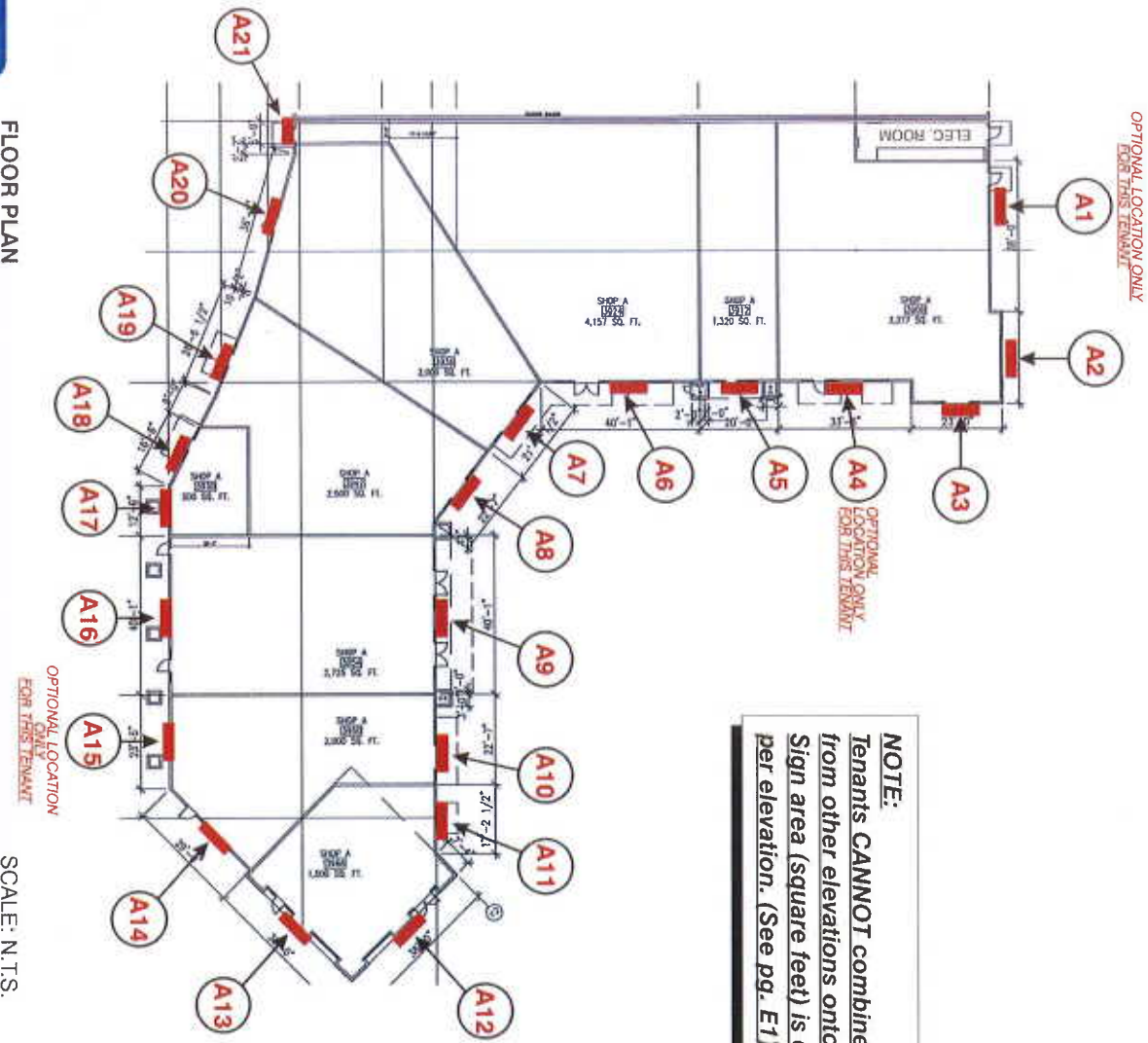
DESIGNER: JR

SCALE: N/A

DESIGN NO : 05 1223

REVISED DATE: 09.13.12

**NOTE:**  
Tenants CANNOT combine square feet from other elevations onto one(1) elevation. Sign area (square feet) is calculated per elevation. (See pg. E1)



FLOOR PLAN

SCALE: N.T.S.



# SHOP "A" TENANT ALLOWED SIGN AREA

DATE: 11.11.05

REVISION NO.: 14

DESIGNER: JR

SCALE: N/A

DESIGN NO.: 05 1223

REVISED DATE: 09.13.12

**NOTE:**  
 Tenants **CANNOT** combine square feet from other elevations onto one(1) elevation. Sign area (square feet) is calculated per elevation. (see diagram below)

## SHOPS "A"

SEE SITE PLAN FOR REFERENCE

Tenant Suite	Linear Store Front	Maximum Sign Area Allowed	TOTAL number of signs allowed <i>One(1) per elevation</i>	Primary Sign Location	Optional Sign Location***
3900	North - 61'-0" East - 56' - 6"	North - 35 sq. ft. East - 35 sq. ft.	Two(2)	A2 A3	A1 A4
3912	East - 20'-0"	East - 20 sq. ft.	One(1)	A5	NONE
3924	East - 40' - 1"	East - 35 sq. ft. South - 8.4 sq. ft.	Two(2)	A6 A21	NONE
3936	North - 21' - 6 1/2" South - 36' - 9"	North - 21.54 sq. ft. South - 35 sq. ft.	Two(2)	A7 A20	NONE
3942	North - 22' - 7" South - 35' - 6"	North - 22.58 sq. ft. South - 35 sq. ft.	Two(2)	A8 A19	NONE
3930	South - 16' - 6" & 12' - 6"	South - 16.5 sq. ft. & 12.5 sq. ft.	Two(2)	A17 OR A18 <small>TENANT CAN HAVE BOTH TWO(2) SIGNS TOTAL.</small>	A17 OR A18 <small>TENANT CAN HAVE BOTH TWO(2) SIGNS TOTAL.</small>
3954	North - 40' - 1" South - 40' - 1"	North - 35 sq. ft. South - 35 sq. ft.	Two(2)	A9 A16	NONE
3960	North - 22' - 7" South - 52' - 5"	North - 22.58 sq. ft. South - 35 sq. ft.	Two(2)	A10 A14	A15 <small>TENANT CAN HAVE ALL THREE(3) LOCATIONS THREE(3) SIGNS TOTAL.</small>
3966	North - 62' - 6 1/2" South - 38' - 0"	North - 35 sq. ft. South - 35 sq. ft.	Three(3)	A11 A12 A13	A11 <small>TENANT CAN HAVE ALL THREE(3) LOCATIONS THREE(3) SIGNS TOTAL.</small>

\*\*NOTE: Optional sign location is designated as an optional *placement* for One(1) sign, if Primary Sign location(s) is not suitable to Tenant and/or Landlord. "Optional" locations for signs does NOT designate additional signage for that tenant. Quantity of signs regulated by this sign program must be followed. This Optional location is mainly designated for End-cap/Tower tenants with Two(2) or more fronts & longer/larger linear fronts.

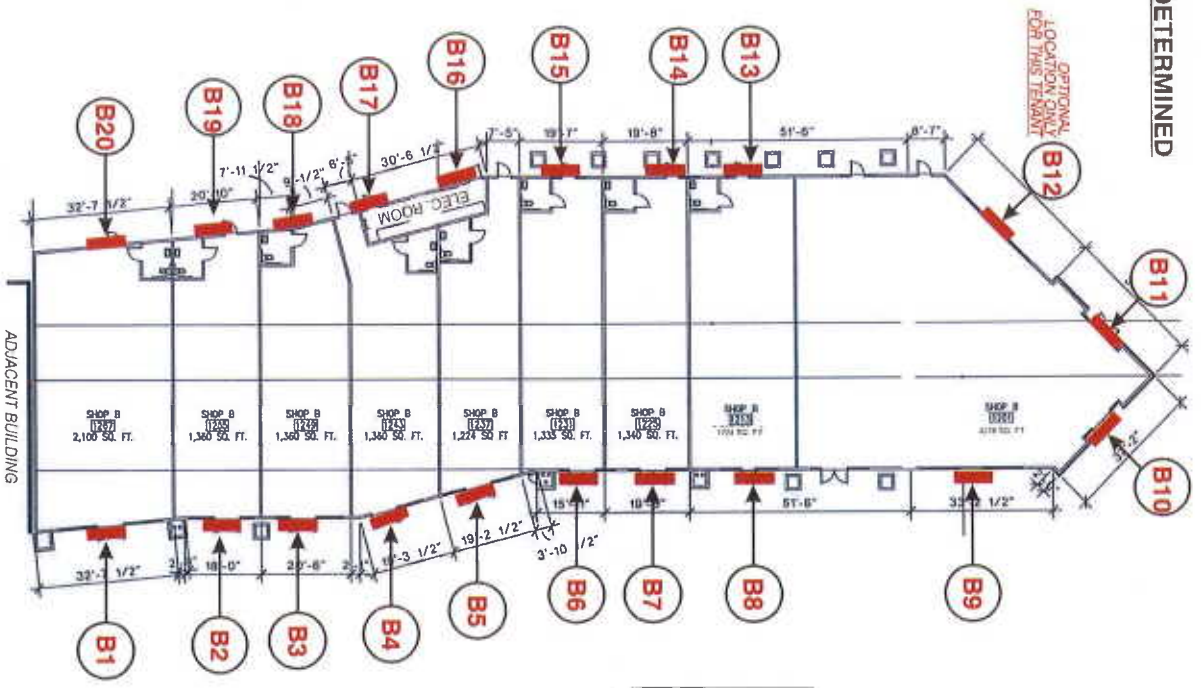


The Central Source for Signage, Graphics & Services



# SHOP "B" TENANT SIGNS LOCATIONS

**NOTE:**  
EXACT LOCATIONS OF SIGNS TO BE DETERMINED  
AND AS APPROVED BY LANDLORD.



FLOOR PLAN

SCALE: N.T.S.



**NOTE:**  
Tenants cannot combine square feet  
from other elevations onto one(1) elevation.  
Sign area (square feet) is calculated  
per elevation.

REVISION NO.: 14

DESIGNER: JR

SCALE: N/A

DESIGN NO : 05 1223

REVISED DATE: 09.13.12

DATE: 11.11.05



# SHOPS "B" TENANT ALLOWED SIGN AREA

DATE: 11.11.05

REVISION NO.: 14

DESIGNER: JR

SCALE: N/A

DESIGN NO : 05 1223

REVISED DATE: 09.13.12

**NOTE:**  
Tenants CANNOT combine square feet from other elevations onto one(1) elevation. Sign area (square feet) is calculated per elevation. (see diagram below)

## SHOPS "B"

SEE SITE PLAN FOR REFERENCE

Tenant Suite	Linear Store Front	Maximum Sign Area Allowed	TOTAL number of signs allowed <i>One(1) per elevation</i>	Primary Sign Location	Optional Sign Location**
1267	East - 32'-7 1/2" West - 32' - 7 1/2"	East - 32.62 sq. ft. West - 32.62 sq. ft.	Two(2)	B1 B20	NONE
1255	East - 20'-9" West - 20' - 10"	East - 20.75 sq. ft. West - 20.83 sq. ft.	Two(2)	B2 B19	NONE
1249	East - 20'-6" West - 17' - 0"	East - 20.50 sq. ft. West - 17.00 sq. ft.	Two(2)	B3 B18	NONE
1243	East - 21'-4 1/2" West - 25' - 2"	East - 21.37 sq. ft. West - 25.16 sq. ft.	Two(2)	B4 B17	NONE
1237	East - 19'-2 1/2" West - 19' - 2"	East - 19.21 sq. ft. West - 19.16 sq. ft.	Two(2)	B5 B16	NONE
1231	East - 20'-0" West - 19' - 7"	East - 20.00 sq. ft. West - 19.58 sq. ft.	Two(2)	B6 B15	NONE
1225	East - 19'-8" West - 19' - 8"	East - 19.66 sq. ft. West - 19.66 sq. ft.	Two(2)	B7 B14	NONE
1213	East - 27'-0" West - 27'-0"	East - 27.00 sq. ft. West - 27.00 sq. ft.	Two(2)	B8 B13	NONE
1201	East - 91'-0" West - 102'-0"	East - 37.00 sq. ft. West - 37.00 sq. ft. Northeast - 37.00 sq. ft.	Three(3)	B9 B10 B11	B12

\*\*NOTE: Optional sign location is designated as an optional placement for One(1) sign, if Primary Sign location(s) is not suitable to Tenant and/or Landlord.  
"Optional" locations for signs does NOT designate additional signage for that tenant. Quantity of signs regulated by this sign program must be followed.  
This Optional location is mainly designated for End-cap/Tower tenants with Two(2) or more fronts & longer/larger linear fronts.



The Central Source for Signage, Graphics & Services



DATE: 2.1.18

REVISED BY : SB

3.5.18

4.10.18

4.19.18

# SEABRIDGE

MARKETPLACE

SATELLITE PAD ADMENDMENT  
FOR MASTER SIGN PROGRAM

---

OXNARD, CA



(805) 630-3272

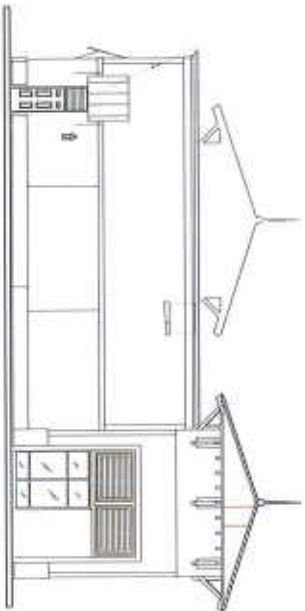
# SATELLITE PAD WALL SIGNS

**\*\*NOTE: ALL MEASUREMENTS MUST BE VERIFIED UPON COMPLETION OF CONSTRUCTION  
FIELD SURVEYS REQUIRED TO VERIFY ALL DIMENSIONS**



**EAST ELEVATION**

91"



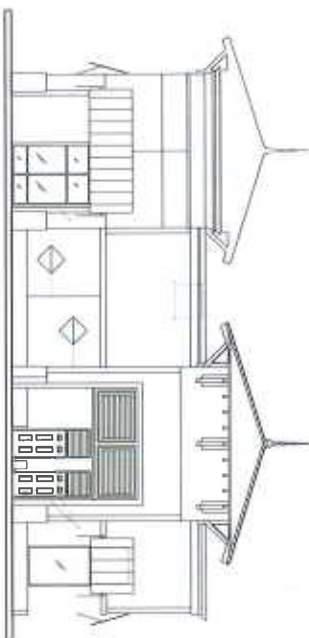
**NORTH ELEVATION**

SCALE: NOT TO SCALE



**WEST ELEVATION**

91"



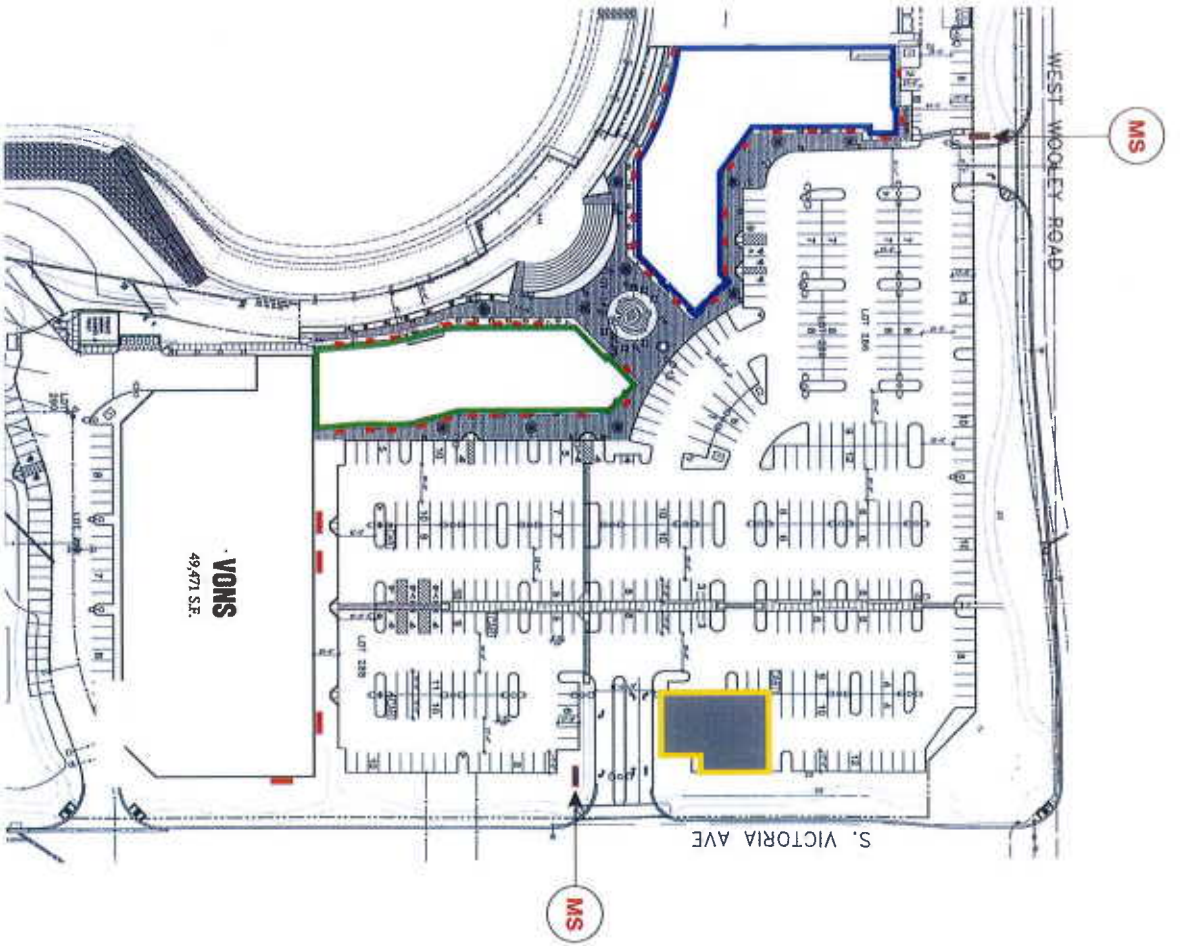
**SOUTH ELEVATION**

SCALE: NOT TO SCALE



# PROJECT SITE PLAN

Item	Legend:
MONUMENT SIGNS	MS
WALL SIGNS	Red line
SHOPS "A"	Blue line
SHOPS "B"	Green line
SATELLITE PAD	Yellow rectangle



SITE PLAN

SCALE: N.T.S.



SATELLITE PAD  
PLAN

# SATELLITE PAD TENANTS WALL SIGNS

The wall signs on the satellite pad are to be constructed with the same specifications as outlined in the existing Master Sign Program which is redacted below from page 1.

The only change is that all channel letter walls throughout the center will be required to have 1/2" spacers from wall.

**SIGN TYPE:** Fabricated individual letters with opaque faces and internal halo lighting; exposed neon (on rheostat); routed metal or stone with concealed light source; fabricated letters with internally illuminated faces; fabricated individual letters with translucent colored acrylic faces and painted metal sides; or open pan channel with exposed neon; fabricated non-illuminated dimensional signs; Signage types not allowed are cabinet or box signs. *(Cabinets/boxes limited to logos only.)* Types of illumination: Internal, external, non-illuminated, neon, LED, or exposed lighting.

**LOCATION:** Building fascia. Minimum distance to edge of building is 36"

**MAXIMUM SIGN AREA:** In general, One (1) square foot of signage per one (1) linear foot of building frontage: Maximum 37 square feet allowed. *(Whichever is less)*  
Sign length cannot exceed 70% of fascia. \*NOTE: See below for "stacked" sign copy/logo area calculation.

**End Cap Tenants (with a second and/or third elevation):** 1 square foot of signage per one (1) linear foot of building frontage facing a pedestrian arcade/mall. Sign length cannot exceed 70% of fascia

**QUANTITY ALLOWED:** Medium Tenants: One(1) per elevation; maximum Two(2) per Tenant.  
End Cap Tenants: One(1) per elevation; maximum Three(3) per Tenant.

**MAXIMUM LETTER HEIGHT:** 24" Maximum when at or above 18'-0" from grade. *(Minimum 22" letter height required. Except in the case the sign length exceeds 70% of the fascia. In which case, the letter height can be reduced as needed)*  
18" Maximum when at or below 10'-0" but not above 18'-0" from grade. *(Minimum 16" letter height required. Except in the case the sign length exceeds 70% of the fascia. In which case, the letter height can be reduced as needed)*

**MOUNTING METHOD:** Surface mounted on building fascia with 1/2" spacers behind letters. Letters may also be mounted on back-lit aluminum backer panel (see diagram) subject to Landlord approval.

**LETTER STYLE:** To be determined by Tenant, subject to Landlord approval.  
**COLORS & MATERIAL:** To be determined by Tenant, subject to Landlord approval and governmental agencies.

**NOTE:** Tenants cannot combine square feet from other elevations onto one(1) elevation.  
*Sign area (square feet) is calculated per elevation and includes backer panel where applicable.*



(805) 630-3272

SATELLITE PAD  
TENANTS  
WALL SIGNS

# SATELLITE PAD ALLOWED SIGN AREA

**NOTE:**  
 Tenants **CANNOT** combine square feet  
 from other elevations onto one(1) elevation.  
 Sign area (square feet) is calculated  
 per elevation. (see diagram below)

## SATELLITE PAD

SEE SITE PLAN FOR REFERENCE

Tenant Suite	ore Front	Maximum Sign Area Allowed	TOTAL number of signs allowed <i>One(1) per elevation</i>	Primary Sign Location
1101 - 1003	West 47' East 47'	West 37 sq ft East 37 sq ft	Two (2)	S1 S6
1105	West 30' East 30'	West 20 sq ft East 20 sq ft	Two (2)	S2 S5
1107	West 24' East 24'	West 24 sq ft East 24 sq ft	Two (2)	S3 S4



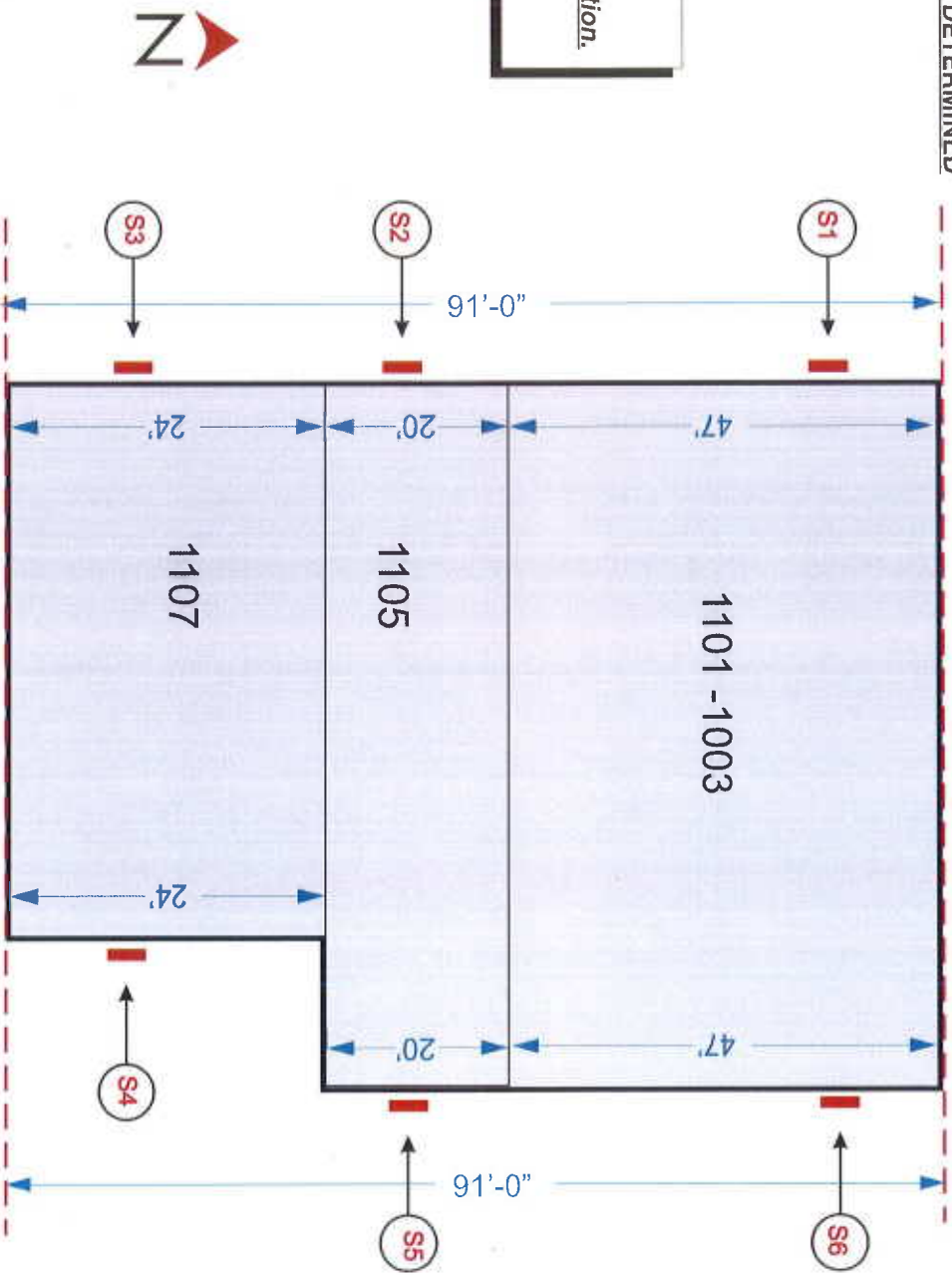
(805) 630-3272

# SATELLITE PAD ALLOWED SIGN AREA

# SATELLITE PAD POSSIBLE SIGN LOCATIONS

**NOTE:**  
EXACT LOCATIONS OF SIGNS TO BE DETERMINED  
AND AS APPROVED BY LANDLORD.

**NOTE:**  
Tenants cannot combine square feet  
from other elevations onto one(1) elevation.  
Sign area (square feet) is calculated  
per elevation.



FLOOR PLAN  
SCALE: N.T.S.



# PROJECT COLOR BOARDS

DATE: 11.11.05

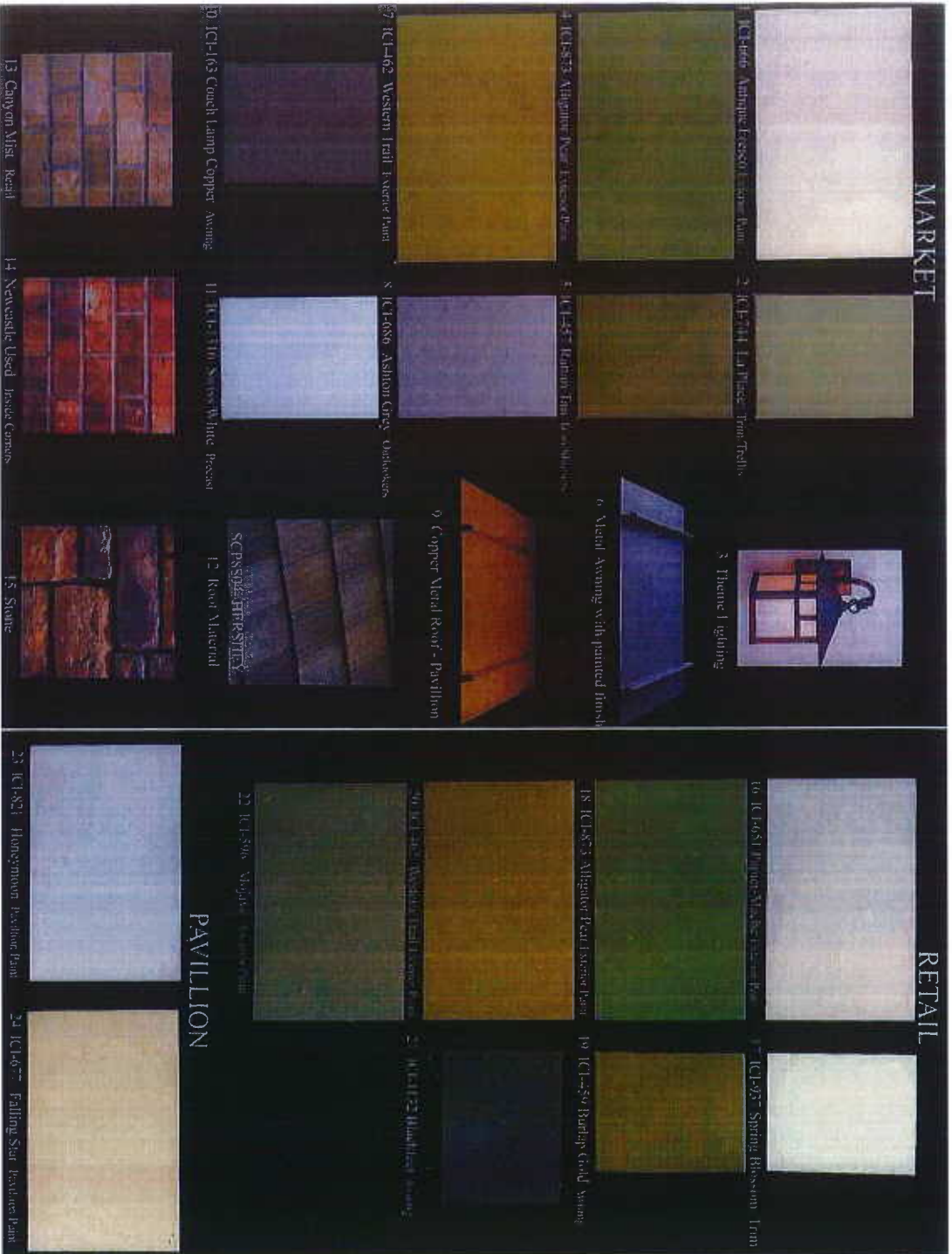
REVISION NO.: 14

DESIGNER: JR

SCALE: N/A

DESIGN NO.: 05 1223

REVISED DATE: 09.13.12



**CENSOURCE**

The Central Source for Signage, Graphics & Services

**PROJECT COLOR BOARDS**