

# 360 - 380 Esplanade

COMPREHENSIVE SIGN PROGRAM

02.27.2019

APPROVED  
BY: JK  
DATE: 03/25/2019  
CITY OF OXNARD  
PLANNING

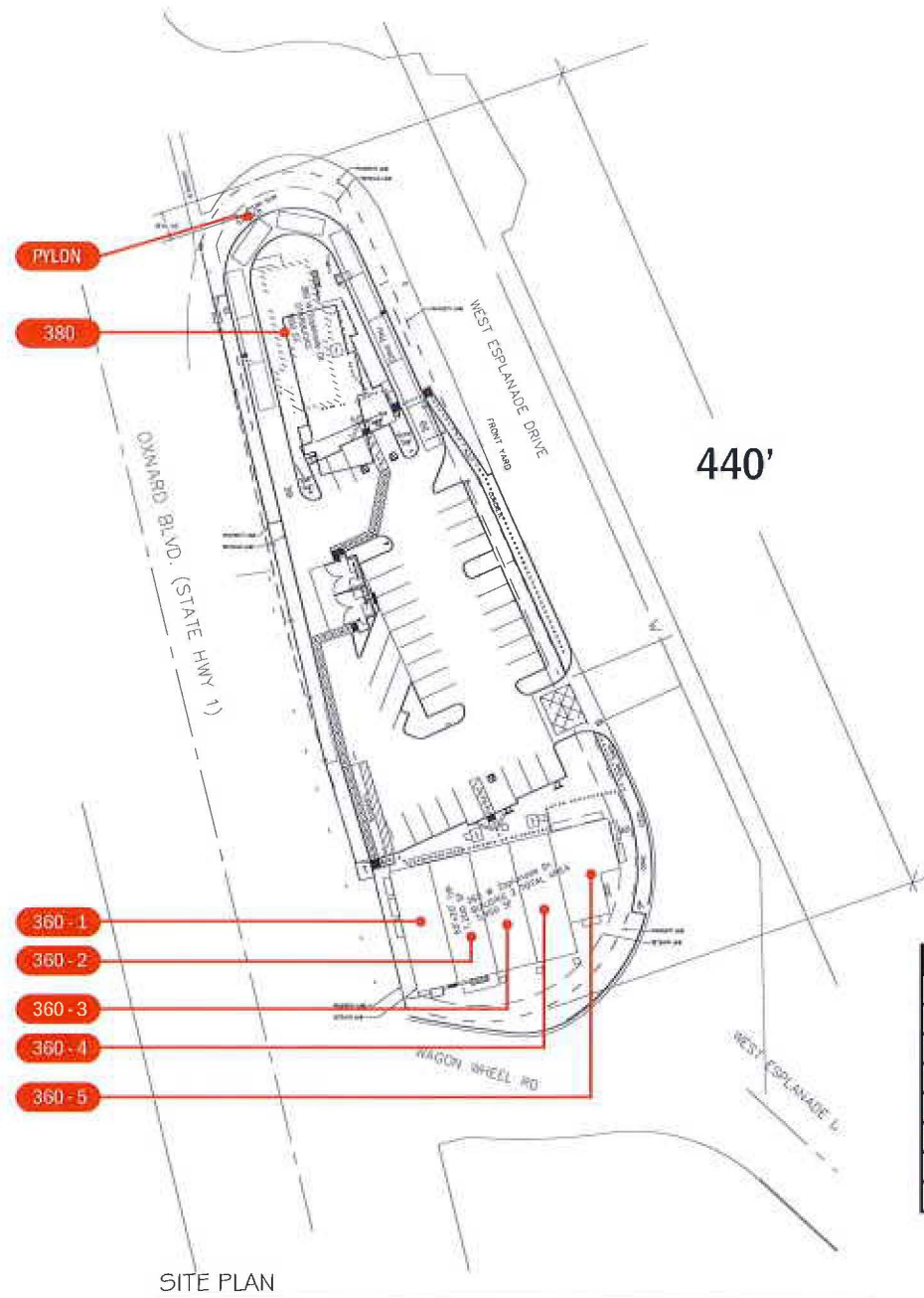
Minor Mod. Pz. 19-140-01

---

**VOGUE SIGN**  
C O M P A N Y  
S I N C E 1 9 6 2

# TABLE OF CONTENT

|                                 |        |
|---------------------------------|--------|
| Site Plan .....                 | page 3 |
| General Sign Requirements ..... | page 4 |
| 360 Elevations .....            | page 5 |
| 380 Elevations.....             | page 6 |
| Typical Sign Example.....       | page 7 |
| Pylon .....                     | page 8 |



SITE PLAN

| SIGN #  | TYPE  | SIZE         |
|---------|-------|--------------|
| PYLON   | PYLON | 181 SQ. FT.  |
| 360 - 1 | WALL  | 36.5 SQ. FT. |
| 360 - 2 | WALL  | 36.5 SQ. FT. |
| 360 - 3 | WALL  | 36.5 SQ. FT. |
| 360 - 4 | WALL  | 36.5 SQ. FT. |
| 360 - 5 | WALL  | 36.5 SQ. FT. |
| 380     | WALL  | 75 SQ. FT.   |

# Approval Process

All signs must be approved by the Landlord and be reviewed for conformance with this Sign Program by the City of Oxnard, with the City issuing subsequent permits, prior to installation of each sign.

## General Sign Requirements

- The allowable for the site is 440 sq.ft. Calculated 1 to 1 per property line frontage. Per City code 16-608 (A)(1)
- One (1) 181 sq.ft. (90.71 per side) double faced pylon sign.
- 75 sq.ft. of building signage for 380
- 183 sq. ft. of building signage for 360

## Wall Signs

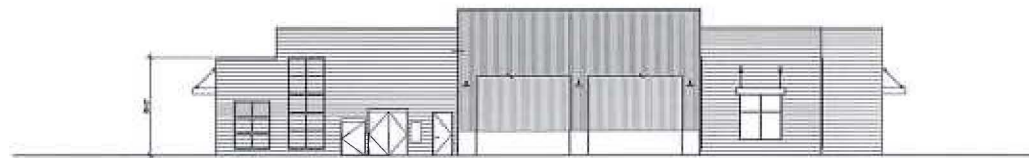
- Each sign's length shall not exceed 75% of the width of the fascia to which it is attached.
- Wall signs are limited to 2 rows of text and 36" overall height.
- Lettering is limited to 24" in height. Non illuminated dimensional letters, Internally illuminated channel letters or halo lit channel letters are allowed.
- Letter/Logo depth cannot exceed 5"
- Channel letter returns are limited to black, white or bronze.

## Window Lettering

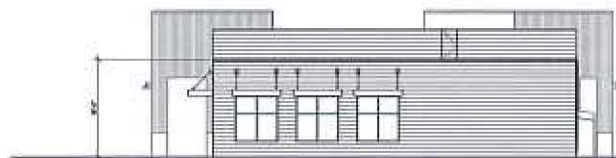
- No more than 20% of the area of the glass surface can be covered by graphics of any kind.



NORTH ELEVATION BUILDING 2



SOUTH ELEVATION BUILDING 2



WEST ELEVATION BUILDING 2



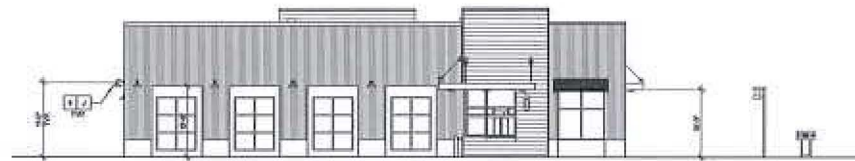
EAST ELEVATION BUILDING 2

## 360 ELEVATIONS

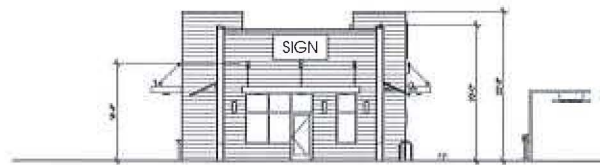




EAST ELEVATION



WEST ELEVATION



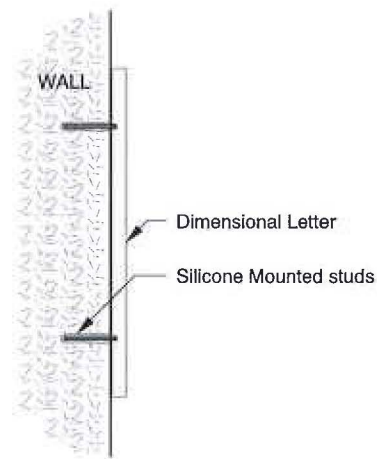
SOUTH ELEVATION



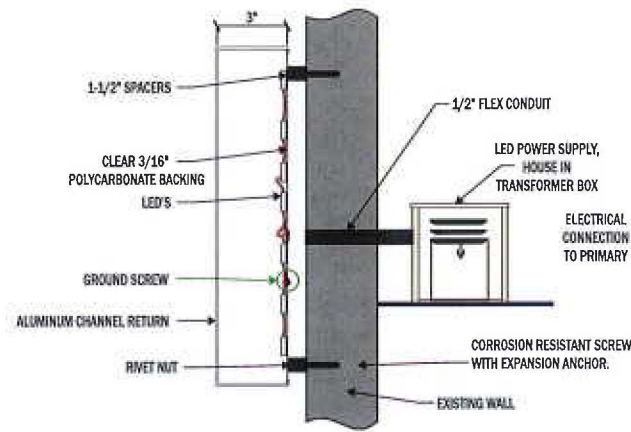
NORTH ELEVATION

## 380 ELEVATIONS

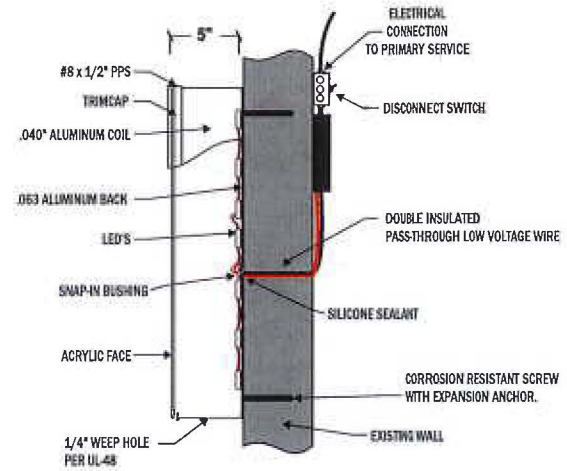
# Typical Sign Example



SECTION DETAIL  
FLAT-CUT-OUT LETTERS



SECTION DETAIL  
HALO-LIT CHANNEL LETTERS



SECTION DETAIL  
FACE-LIT CHANNEL LETTERS

